

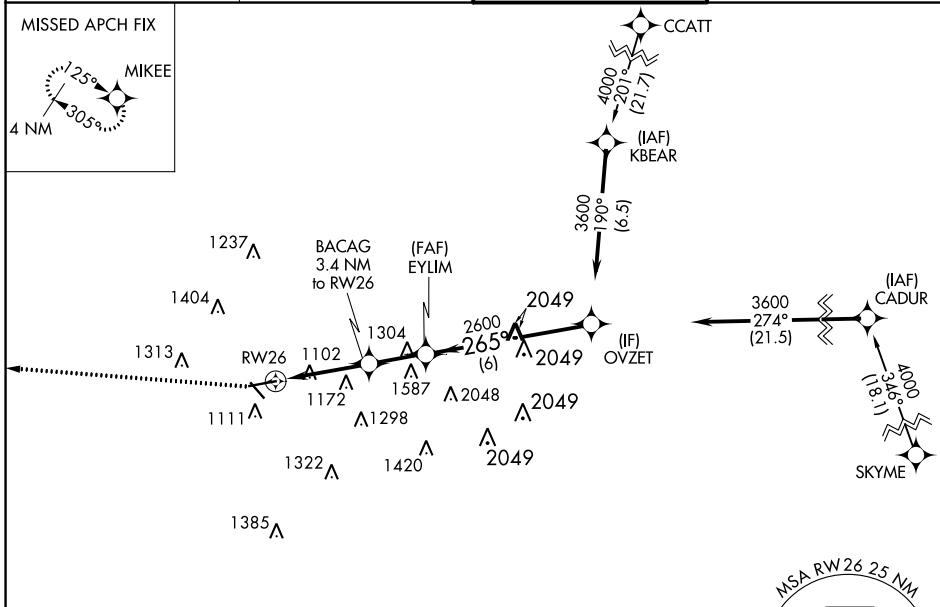
WAAS CH 65930 W26A	APP CRS 265°	Rwy Idg TDZE Apt Elev 5797 814 841
--	------------------------	--

RNAV (GPS) RWY 26

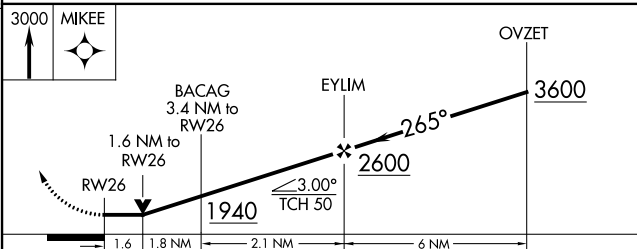
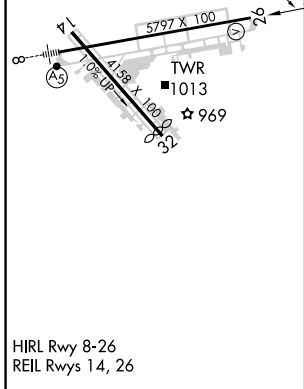
FULTON COUNTY EXEC/CHARLIE BROWN FLD (F'TY)

RNP APCH. ⚠ Circling Rwy 14, 32 NA at night. Rwy 26 helicopter visibility reduction below 3/4 SM NA.	MISSED APPROACH: Climb to 3000 direct MIKEE and hold.
---	---

ATIS 120.175	ATLANTA APP CON 121.0 268.7	FULTON COUNTY TOWER 118.45 257.8	GND CON 121.7 348.6
------------------------	---------------------------------------	--	-------------------------------



ELEV 841	D	TDZE 814
----------	----------	----------



CATEGORY	A	B	C	D
LP MDA	1360-1	546 (600-1)	1360-1 ⁵ / ₈	546 (600-1 ⁵ / ₈)
LNAV MDA	1380-1	566 (600-1)	1380-1 ⁵ / ₈	566 (600-1 ⁵ / ₈)
C CIRCLING	1440-1 599 (600-1)	1520-1 679 (700-1)	1740-2 ³ / ₄ 899 (900-2 ³ / ₄)	1740-3 899 (900-3)

SE-4, 31 OCT 2024 to 28 NOV 2024

SE-4, 31 OCT 2024 to 28 NOV 2024