

(TARPN.TARPN1) 21224

# TARPN ONE ARRIVAL (RNAV)

AL-744 (FAA)

FORT LAUDERDALE, FLORIDA

RNAV 1-DME/DME/IRU or GPS.

RADAR required.

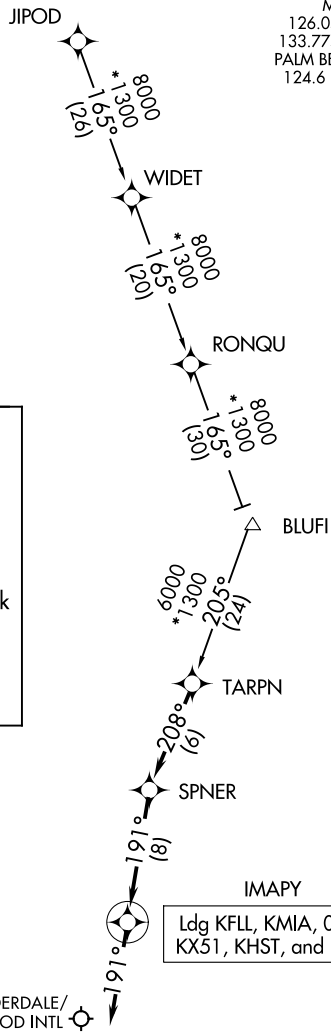
MIAMI APP CON  
 126.05 251.1 (9000)  
 133.775 371.9 (7000)  
 PALM BEACH APP CON  
 124.6 317.4 (12000)  
 FLL D-ATIS  
 135.0  
 KHST ATIS ★  
 132.275 269.9  
 MIA D-ATIS  
 119.15  
 OPF ATIS  
 125.9  
 TMB ATIS  
 124.0

NOTE: Turboprop aircraft only.

## ARRIVAL ROUTE DESCRIPTION

JIPOD TRANSITION (JIPOD.TARPN1)  
RONQU TRANSITION (RONQU.TARPN1)

LANDING ALL AIRPORTS: From TARPN on track 208° to SPNER, then on track 191° to IMAPY, then on track 191°. Expect RADAR vectors to final approach course.



IMAPY  
 Ldg KFL, KMIA, 07FA,  
 KX51, KHST, and KTMB

FORT LAUDERDALE/  
HOLLYWOOD INTL

MIAMI-OPA LOCKA EXEC

MIAMI INTL

MIAMI EXEC

MIAMI HOMESTEAD  
GENERAL AVIATION

HOMESTEAD ARB

OCEAN REEF CLUB  
(Private)

NOTE: Chart not to scale.

SE-3, 30 DEC 2021 to 27 JAN 2022

SE-3, 30 DEC 2021 to 27 JAN 2022

# TARPN ONE ARRIVAL (RNAV)

(TARPN.TARPN1) 12AUG21

FORT LAUDERDALE, FLORIDA