

# SNAPR TWO DEPARTURE (RNAV)

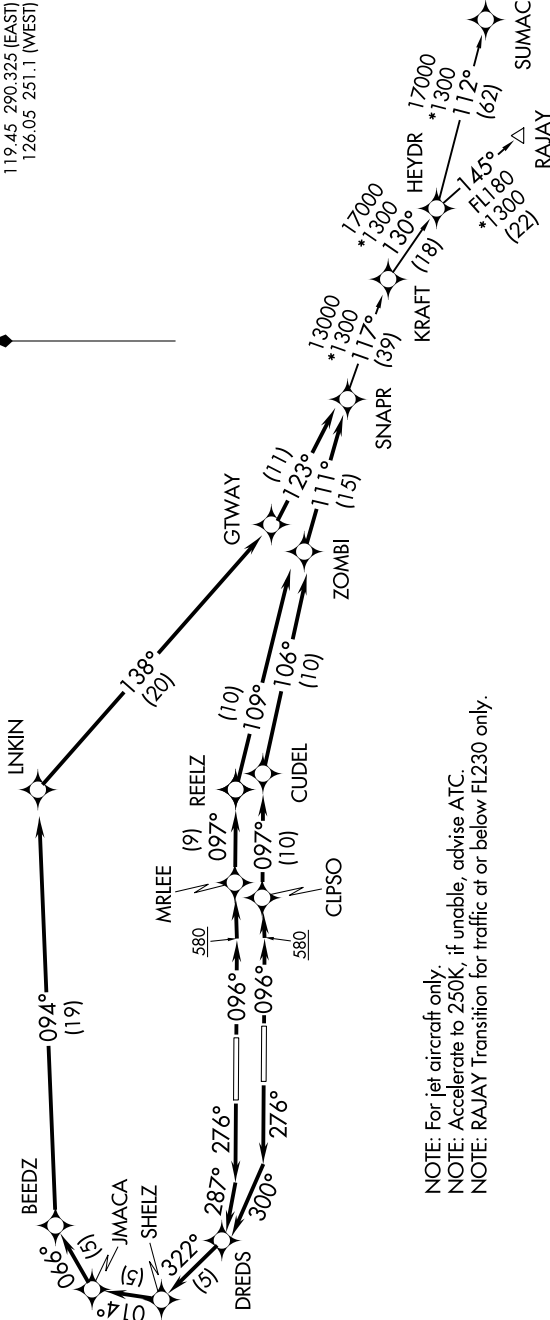
D-ATIS 135.0  
 CLNC DEL 128.4  
 CPDLC  
 GND CON 121.4  
 FORT LAUDERDALE TOWER 119.3 257.8  
 MIAMI DEP CON 119.45 290.325 (EAST)  
 126.05 251.1 (WEST)



**TOP ALTITUDE:**  
4000

SE-3, 31 OCT 2024 to 28 NOV 2024

RNAV 1 - DME/DME/IRU or GPS.  
 From HEYDR - GPS.  
 RADAR required.



NOTE: For jet aircraft only.  
 NOTE: Accelerate to 250K, if unable, advise ATC.  
 NOTE: RAJAY Transition for traffic at or below FL230 only.

**TAKEOFF MINIMUMS**  
 Rwy's 10L/R, 28L/R: Standard with minimum climb of 500' per NM to 580.

(NARRATIVE ON FOLLOWING PAGE)

NOTE: Chart not to scale.

# SNAPR TWO DEPARTURE (RNAV)