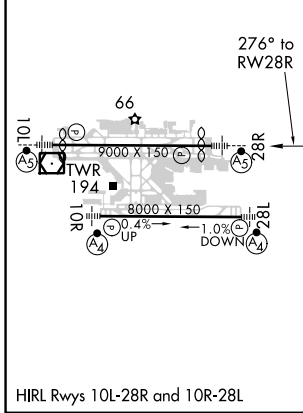
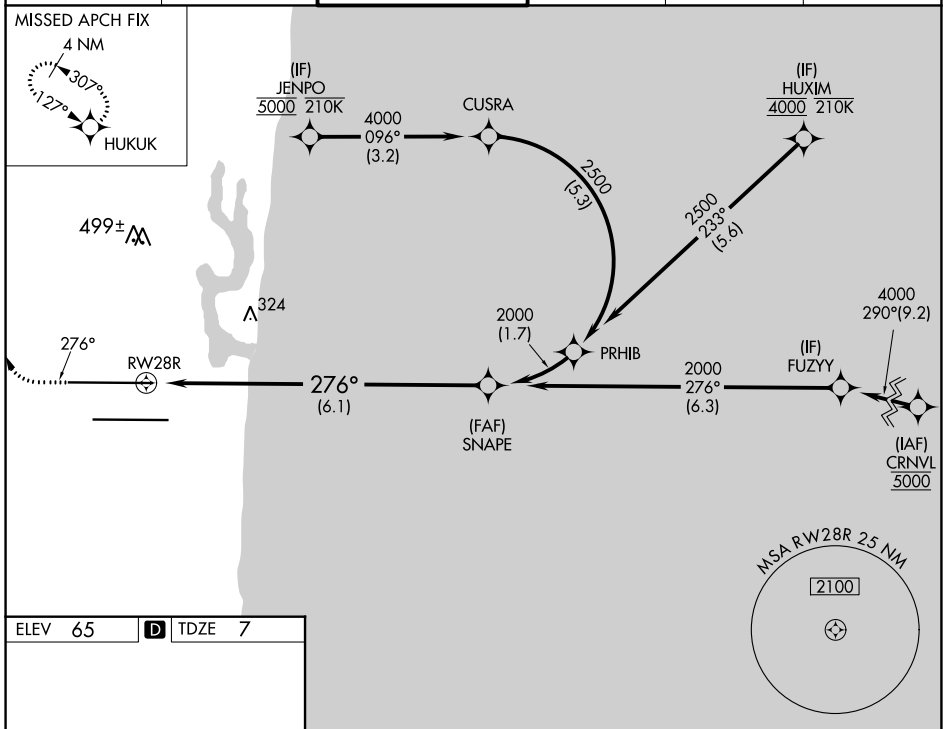


APP CRS <b>276°</b>	Rwy Idg <b>8394</b>
	TDZE <b>7</b>
	Apt Elev <b>65</b>

# RNAV (RNP) Z RWY 28R

FORT LAUDERDALE/HOLLYWOOD INTL (FLL)

RNP AR APCH - GPS. RADAR required.		MALSR 		MISSED APPROACH: Climb to 800 then climbing right turn to 4000 direct HUKUK and hold, continue climb-in-hold to 4000.	
<p>Simultaneous approach authorized. For uncompensated Baro-VNAV systems, procedure NA below 7°C or above 54°C. For inop ALS, increase RNP 0.15 visibility to RVR 5500 and increase RNP 0.30 visibility to 1¾ SM.</p>					
D-ATIS <b>135.0</b>	MIAMI APP CON <b>133.775 285.6</b>	<b>FORT LAUDERDALE TOWER</b> <b>119.3 257.8</b>	GND CON <b>121.4</b>	CLNC DEL <b>128.4</b>	CPDLC



CATEGORY	A	B	C	D
RNP 0.15 DA		362/40	355 (300-¾)	
RNP 0.30 DA		618-1⅓	611 (600-1⅓)	

## AUTHORIZATION REQUIRED

SE-3, 30 DEC 2021 to 27 JAN 2022

SE-3, 30 DEC 2021 to 27 JAN 2022