

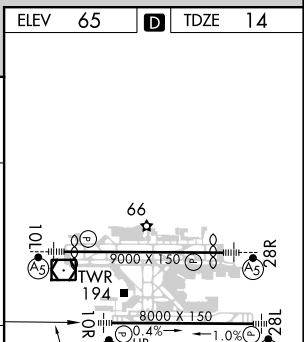
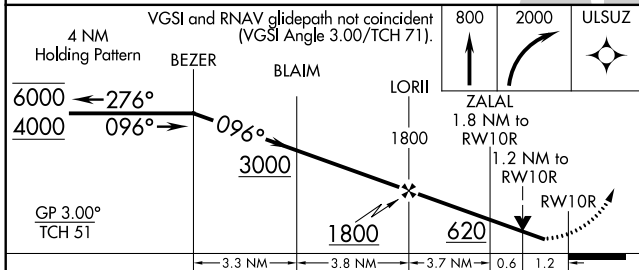
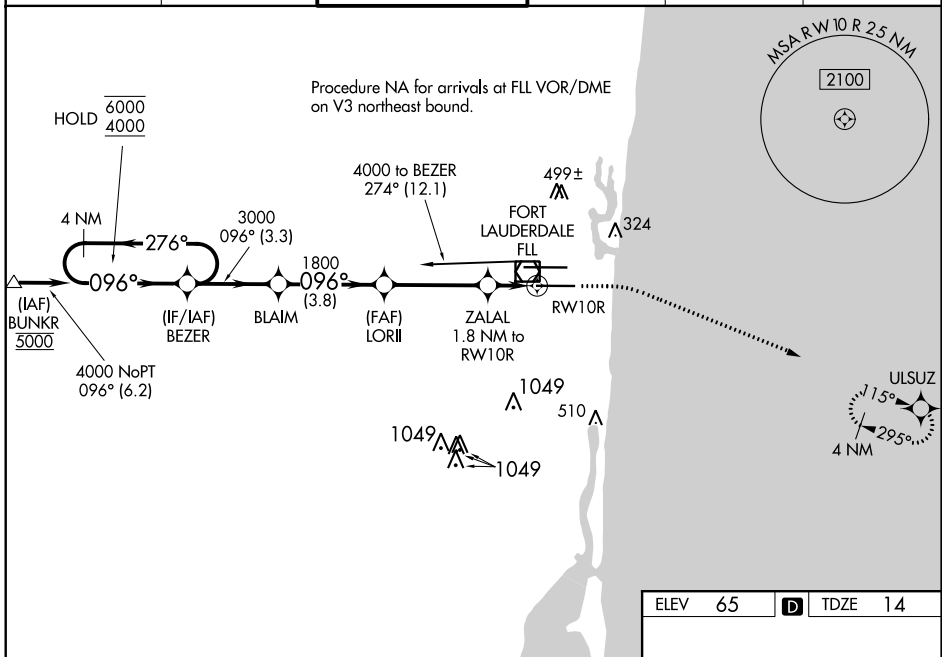
WAAS CH <b>63236</b> <b>W10B</b>	APP CRS <b>096°</b>	Rwy Idg TDZE Apt Elev	<b>8000</b> <b>14</b> <b>65</b>
--	------------------------	-----------------------------	---------------------------------------

# RNAV (GPS) RWY 10R

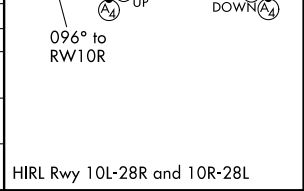
FORT LAUDERDALE/HOLLYWOOD INTL (FLL)

RNP APCH-GPS.	MALSIF 	MISSED APPROACH: Climb to 800 then climbing right turn to 2000 direct ULSUZ and hold.
<p><b>⚠</b> LNAV procedure NA during simultaneous operations. Rwy 10R helicopter visibility reduction below RVR 4000 NA. Inop table does not apply to LPV all Cats. For uncompensated Baro-VNAV systems, LNAV/VNAV NA below 7° C or above 54° C. For inop ALS, increase LNAV Cats C and D visibility to 1½ SM. Use of FD or AP required during simultaneous operations</p>		

D-ATIS <b>135.0</b>	MIAMI APP CON <b>133.775 285.6</b>	<b>FORT LAUDERDALE TOWER</b> <b>119.3 257.8</b>	GND CON <b>121.4</b>	CLNC DEL <b>128.4</b>	CPDLC
------------------------	---------------------------------------	--	-------------------------	--------------------------	-------



CATEGORY	A	B	C	D
LPV DA		264/40	250 (200-¾)	
LNAV/VNAV DA		355/40	341 (300-¾)	
LNAV MDA	460/40	446 (400-¾)	460/55	446 (400-1)
<b>C</b> CIRCLING	680-1	615 (700-1)	800-2 735 (800-2)	800-2¼ 735 (800-2¼)



SE-3, 30 DEC 2021 to 27 JAN 2022

SE-3, 30 DEC 2021 to 27 JAN 2022