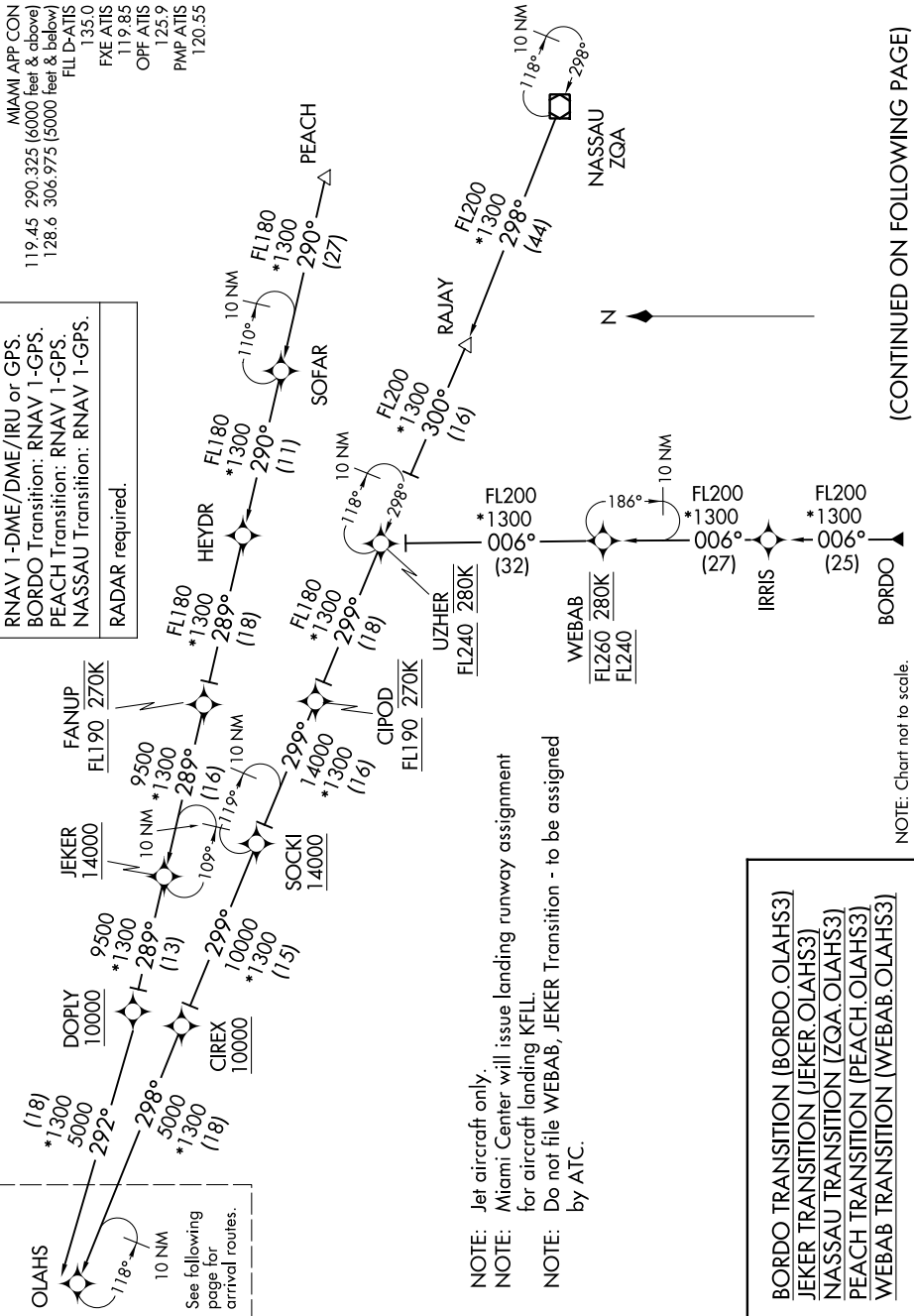


OLAH3 THREE ARRIVAL (RNAV) Transition Routes FORT LAUDERDALE, FLORIDA

MIAMI APP CON
119.45 290.325 (6000 feet & above)
128.6 306.975 (5000 feet & below)
FL D-ATIS
135.0
FYE ATIS
119.83
OPF ATIS
125.9
PMP ATIS
120.55

RNAV 1-DME/DME/IRU or GPS.
BORDO Transition: RNAV 1-GPS.
PEACH Transition: RNAV 1-GPS.
NASSAU Transition: RNAV 1-GPS.
RADAR required.



NOTE: Jet aircraft only.
NOTE: Miami Center will issue landing runway assignment for aircraft landing KFLI.
NOTE: Do not file WEBAB, JEKER Transition - to be assigned by ATC.

BORDO TRANSITION (BORDO.OLAH33)
JEKER TRANSITION (JEKER.OLAH33)
NASSAU TRANSITION (ZQA.OLAH33)
PEACH TRANSITION (PEACH.OLAH33)
WEBAB TRANSITION (WEBAB.OLAH33)

NOTE: Chart not to scale.

(CONTINUED ON FOLLOWING PAGE)

OLAH3 THREE ARRIVAL (RNAV) Transition Routes FORT LAUDERDALE, FLORIDA