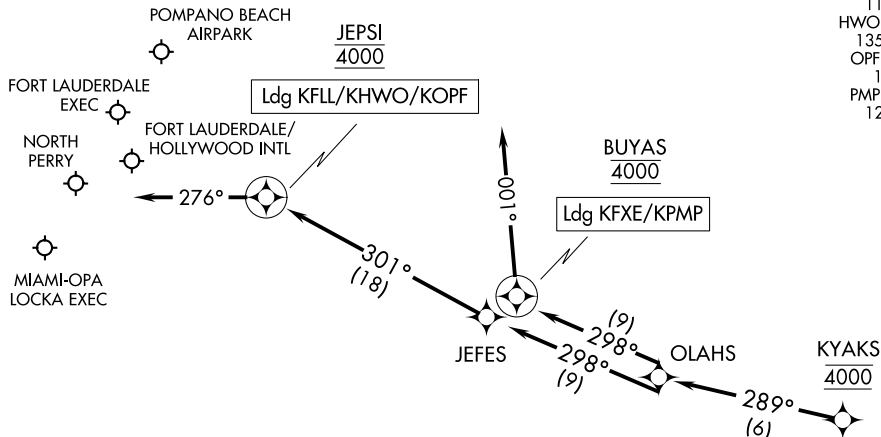


KYAKS ONE ARRIVAL (RNAV) Arrival Routes

FORT LAUDERDALE, FLORIDA

RNAV 1-GPS.
RADAR required.

MIAMI APP CON
124.85 306.975
FLL D-ATIS
135.0
FXE ATIS
119.85
HWO ATIS
135.475
OPF ATIS
125.9
PMP ATIS
120.55



NOTE: Turboprop and prop aircraft only.

NOTE: Chart not to scale.

ARRIVAL ROUTE DESCRIPTION

LANDING KFL/KHWO/KOPF: From KYAKS on track 289° to OLAHS, then on track 298° to JEFES, then on track 301° to cross JEPSI at 4000, then on heading 276° or as assigned by ATC. Expect RADAR vectors to final approach course.

LANDING KFEXE/KPMP: From KYAKS on track 289° to OLAHS, then on track 298° to cross BUYAS at 4000, then on heading 001° or as assigned by ATC. Expect RADAR vectors to final approach course.