

(GLADZ4.GLADZ) 24305

GLADZ FOUR DEPARTURE (RNAV) Transition Routes

AL-744 (FAA)

FORT LAUDERDALE/HOLLYWOOD INTL (FLL)

FORT LAUDERDALE, FLORIDA

SE-3, 31 OCT 2024 to 28 NOV 2024

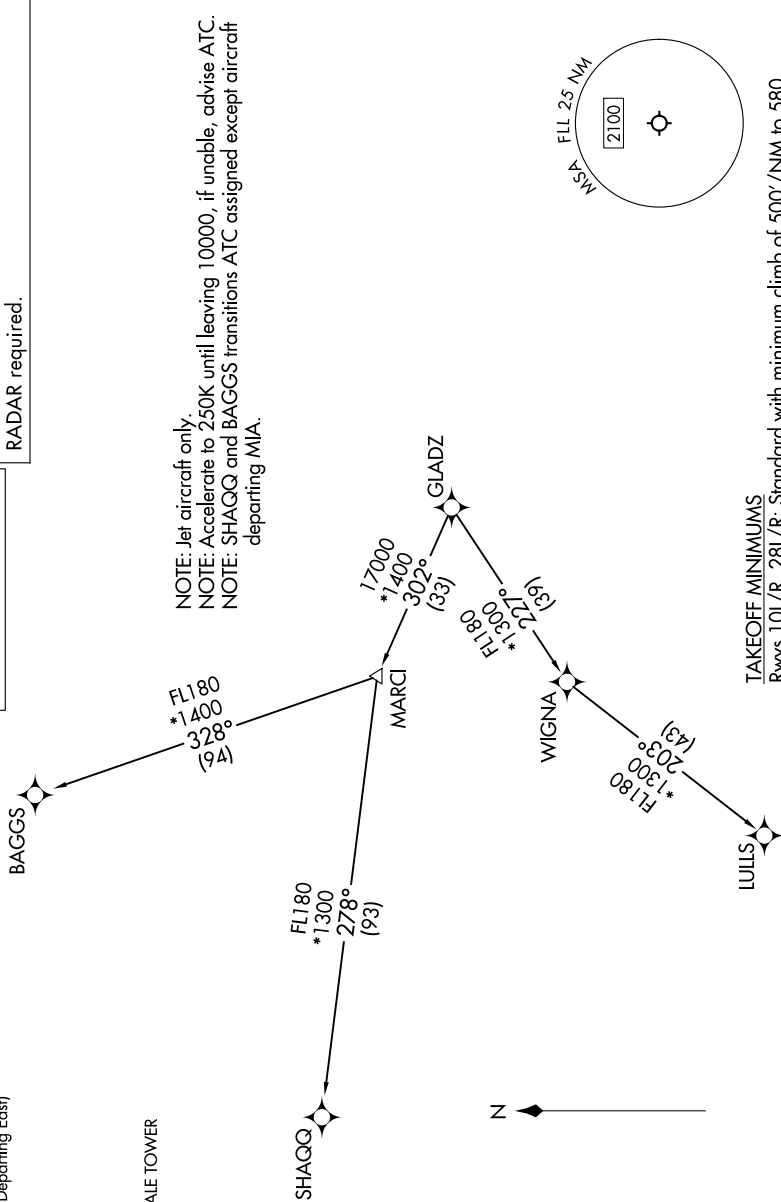
MIAMI DEP CON
119.45 290.325 (Departing West)
126.05 251.1 (Departing East)
D-ATIS
135.0
CLNC DEL
128.4
CPDLC
GND CON
121.4
FORT LAUDERDALE TOWER
119.3 257.8

TOP ALTITUDE: ASSIGNED BY ATC

RNAV-1 DME/DME/IRU or GPS.

RADAR required for NON-GPS equipped aircraft.

RADAR required.



TAKEOFF MINIMUMS
Rwys 10L/R, 28L/R: Standard with minimum climb of 500'/NM to 580.



(CONTINUED ON FOLLOWING PAGE)

NOTE: Chart not to scale.

SE-3, 31 OCT 2024 to 28 NOV 2024

GLADZ FOUR DEPARTURE (RNAV) Transition Routes

FORT LAUDERDALE, FLORIDA

(GLADZ4.GLADZ) 31OCT24

FORT LAUDERDALE/HOLLYWOOD INTL (FLL)