

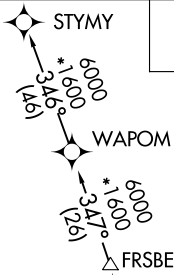
(FRSB2.FRSBE) 23110

AL-744 (FAA)

# FRSB2 TWO DEPARTURE (RNAV)

FORT LAUDERDALE/HOLLYWOOD INTL (FLL)

FORT LAUDERDALE, FLORIDA



**TOP ALTITUDE:  
4000**

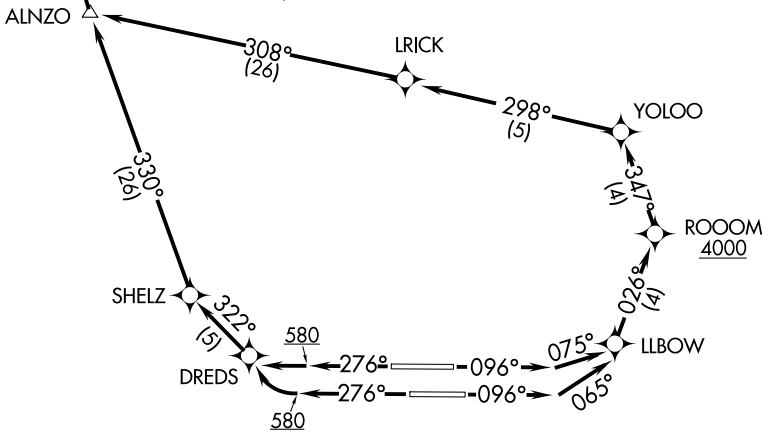
RNAV 1-DME/DME IRU or GPS.
RADAR required.

D-ATIS 135.0  
 CLNC DEL 128.4  
 CPDLC  
 GND CON 121.4  
 FORT LAUDERDALE TOWER 119.3 257.8  
 MIAMI DEP CON 126.05 251.1

NOTE: Jet aircraft only.  
 NOTE: Accelerate to 250K, if unable, advise ATC.  
 NOTE: WAPOM Transition for KMCO, KDAB, and KMLB area arrivals.

### TAKEOFF MINIMUMS

Rwys 10L/R, 28L/R: Standard with minimum climb of 500' per NM to 580.



SE-3, 31 OCT 2024 to 28 NOV 2024

SE-3, 31 OCT 2024 to 28 NOV 2024

## DEPARTURE ROUTE DESCRIPTION

SEE ADDITIONAL REQUIREMENTS ON AAUP

**TAKEOFF RUNWAY 10L:** Climb on heading 096° to intercept course 075° to LLBOW, then on track 026° to cross ROOOM at or above 4000, then on track 347° to YOLOO, then on track 298° to LRICK, then on track 308° to ALNZO, thence. . .

**TAKEOFF RUNWAY 10R:** Climb on heading 096° to intercept course 065° to LLBOW, then on track 026° to cross ROOOM at or above 4000, then on track 347° to YOLOO, then on track 298° to LRICK, then on track 308° to ALNZO, thence. . .

**TAKEOFF RUNWAY 28L:** Climb on heading 276° to 580, then right turn direct DREDS, then on track 322° to SHELZ, then on track 330° to ALNZO, thence. . .

**TAKEOFF RUNWAY 28R:** Climb on heading 276° to 580, then direct DREDS, then on track 322° to SHELZ, then on track 330° to ALNZO, thence. . .

. . . on track 350° to FRSBE, then on (Transition). Maintain 4000, expect filed altitude 10 minutes after departure.

STYMY TRANSITION (FRSB2.STYMY)

WAPOM TRANSITION (FRSB2.WAPOM)

# FRSB2 TWO DEPARTURE (RNAV)

(FRSB2.FRSBE) 20APR23

FORT LAUDERDALE, FLORIDA

FORT LAUDERDALE/HOLLYWOOD INTL (FLL)