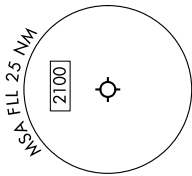


# BNICE TWO DEPARTURE (RNAV) Departure Routes

MIAMI DEP CON  
126.05 251.1  
D-ATIS  
135.0  
CLNC.DEL  
128.4  
CPDLC  
GND CON  
121.4  
FORT LAUDERDALE TOWER  
119.3 257.8

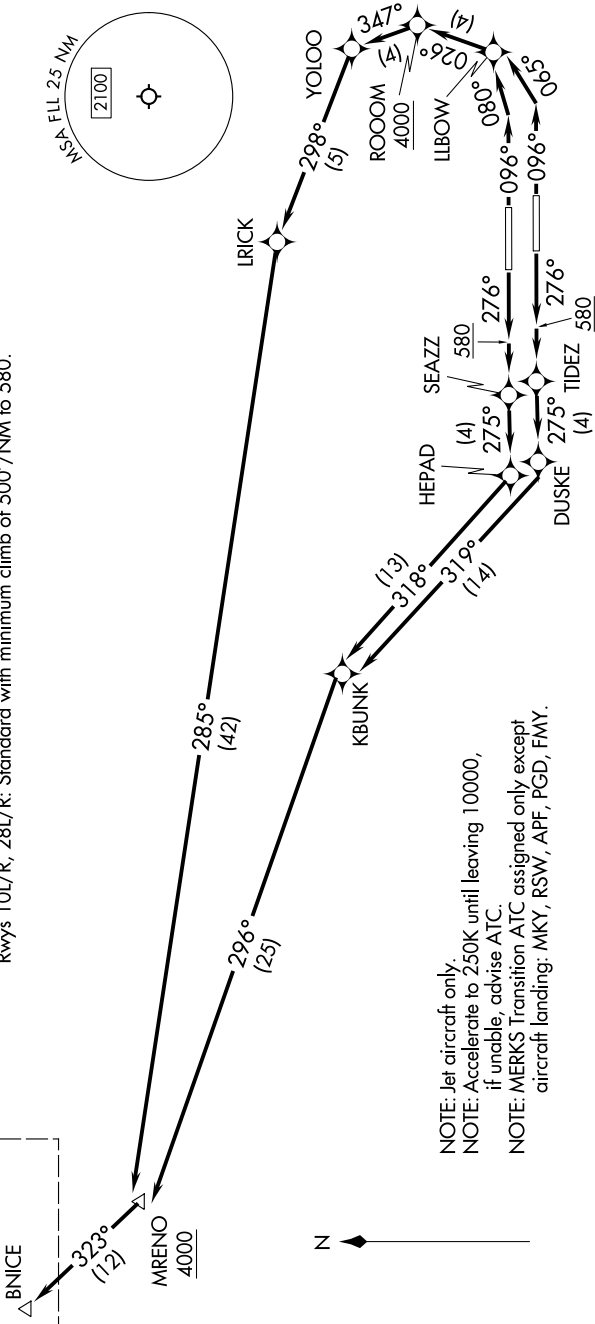


**TAKEOFF MINIMUMS**  
Rwys 10L/R, 28L/R: Standard with minimum climb of 500' / NM to 580.

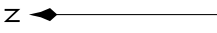
**TOP ALTITUDE:**  
4000

RNAV 1 - DME/DME/IRU or GPS.  
RADAR required for non-GPS equipped aircraft.

See following page for transition routes.



NOTE: Jet aircraft only.  
NOTE: Accelerate to 250K until leaving 10000, if unable, advise ATC.  
NOTE: MERKS Transition ATC assigned only except aircraft landing: MKY, RSW, APF, PGD, FMY.



(CONTINUED ON FOLLOWING PAGE)

NOTE: Chart not to scale.