

BHHIA ONE ARRIVAL(RNAV) Transition Routes

FORT LAUDERDALE, FLORIDA

MIAMI APP CON
120.5 350.225
FLL D-ATIS
135.0
FXE ATIS
119.85
OPF ATIS
125.9
PMP ATIS
120.55

RNAV 1-DME/DME/IRU or GPS.
CANOA TRANSITION, RNP 1-GPS.
MAXIM TRANSITION, RNP 1-GPS.
IKBIX TRANSITION, RNP 1-GPS.
RADAR required.

See following page
for Arrival Routes.

BHHIA
7000
KERRA
7000

CANOA TRANSITION (CANOA.BHHIA1)
FILCH TRANSITION (FILCH.BHHIA1)
HULKY TRANSITION (HULKY.BHHIA1)
IKBIX TRANSITION (IKBIX.BHHIA1)
MAXIM TRANSITION (MAXIM.BHHIA1)
PYREX TRANSITION (PYREX.BHHIA1)

NOTE: Expect "descend via" clearance and landing direction (east or west) by ARTCC. For vertical navigation planning, FLL landing east, select Rwy 10R, FLL landing west, select Rwy 28R.

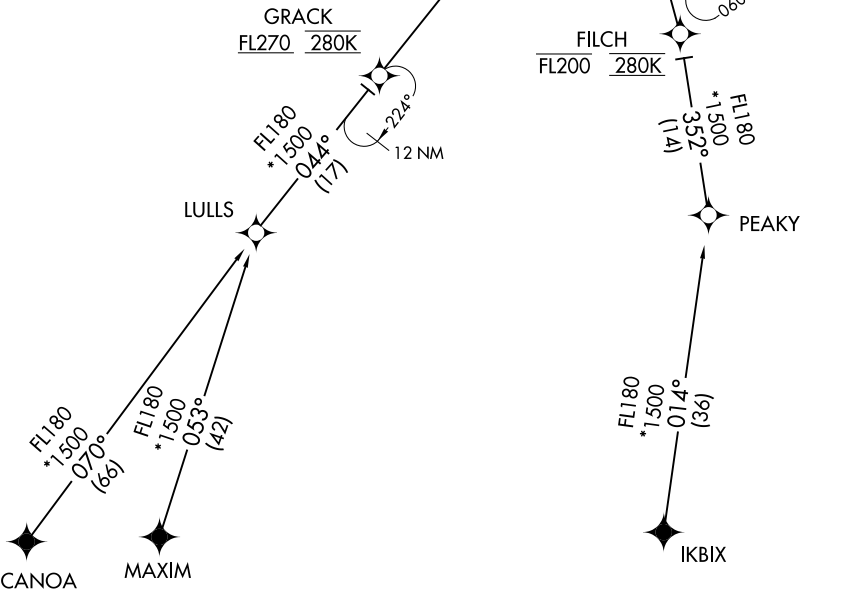
NOTE: MIA approach will issue landing runway.

NOTE: Descend via MACH number until intercepting 280K. Maintain 280K until slowed by the STAR or assigned by ATC.

NOTE: FILCH and HULKY TRANSITIONS, ATC assigned only.

NOTE: PYREX TRANSITION, for EYW area airports only.

NOTE: Jet aircraft only.



SE-3, 30 DEC 2021 to 27 JAN 2022

SE-3, 30 DEC 2021 to 27 JAN 2022

(CONTINUED ON FOLLOWING PAGE)

NOTE: Chart not to scale.