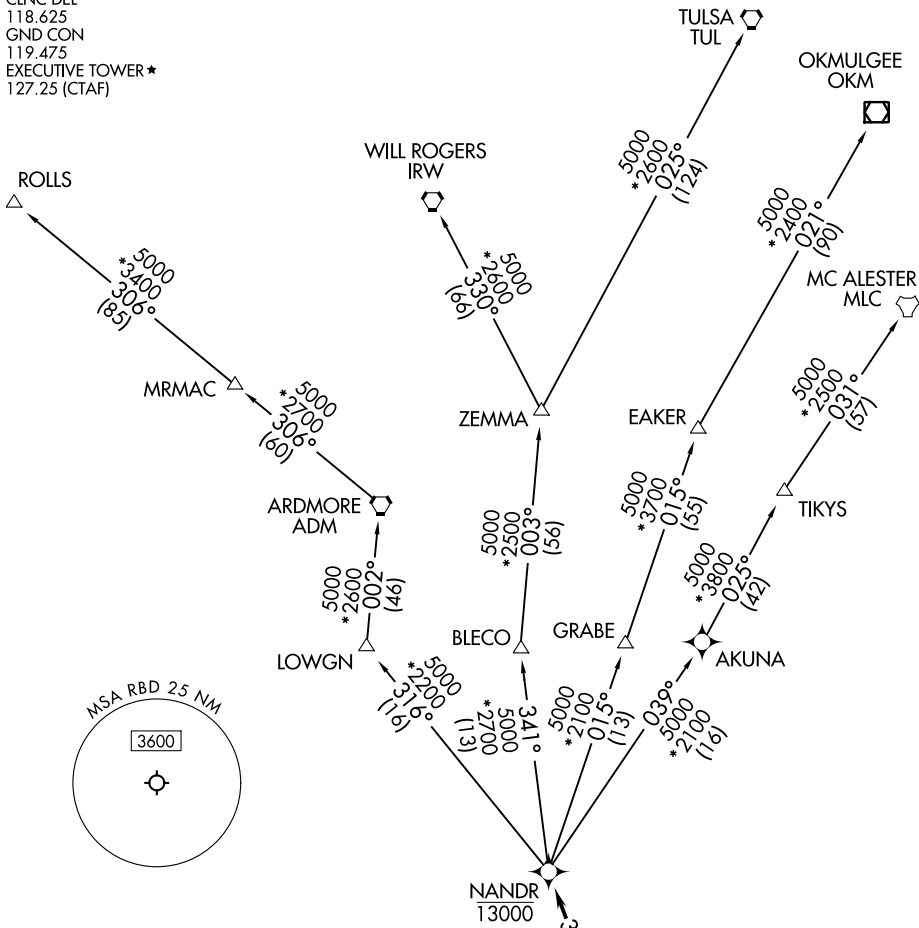


NANDR TWO DEPARTURE (RNAV)

LONE STAR DEP CON
 125.2 343.65
 ATIS
 126.35
 CLNC DEL
 118.625
 GND CON
 119.475
 EXECUTIVE TOWER ★
 127.25 (CTAF)

RNAV 1 - DME/DME/IRU or GPS.
 RADAR required.

**TOP ALTITUDE:
 ASSIGNED BY ATC**



SC-2, 31 OCT 2024 to 28 NOV 2024

SC-2, 31 OCT 2024 to 28 NOV 2024

TAKEOFF MINIMUMS

Rwys 13, 31, 35: Standard.
 Rwy 17: 400-2¾ or standard with
 minimum climb of 220' per NM to 1200.

NOTE: EAKER transition: For TUL terminal arrivals only.
 NOTE: TULSA transition: For all aircraft overflying TUL VORTAC.
 NOTE: Aircraft arriving to the Oklahoma City terminal area,
 file and expect the ZEMMA enroute transition.

NOTE: Chart not to scale.

(CONTINUED ON FOLLOWING PAGE)

NANDR TWO DEPARTURE (RNAV)