

GARLAND FIVE DEPARTURE

SC-2, 31 OCT 2024 to 28 NOV 2024

TOP ALTITUDE: ASSIGNED BY ATC

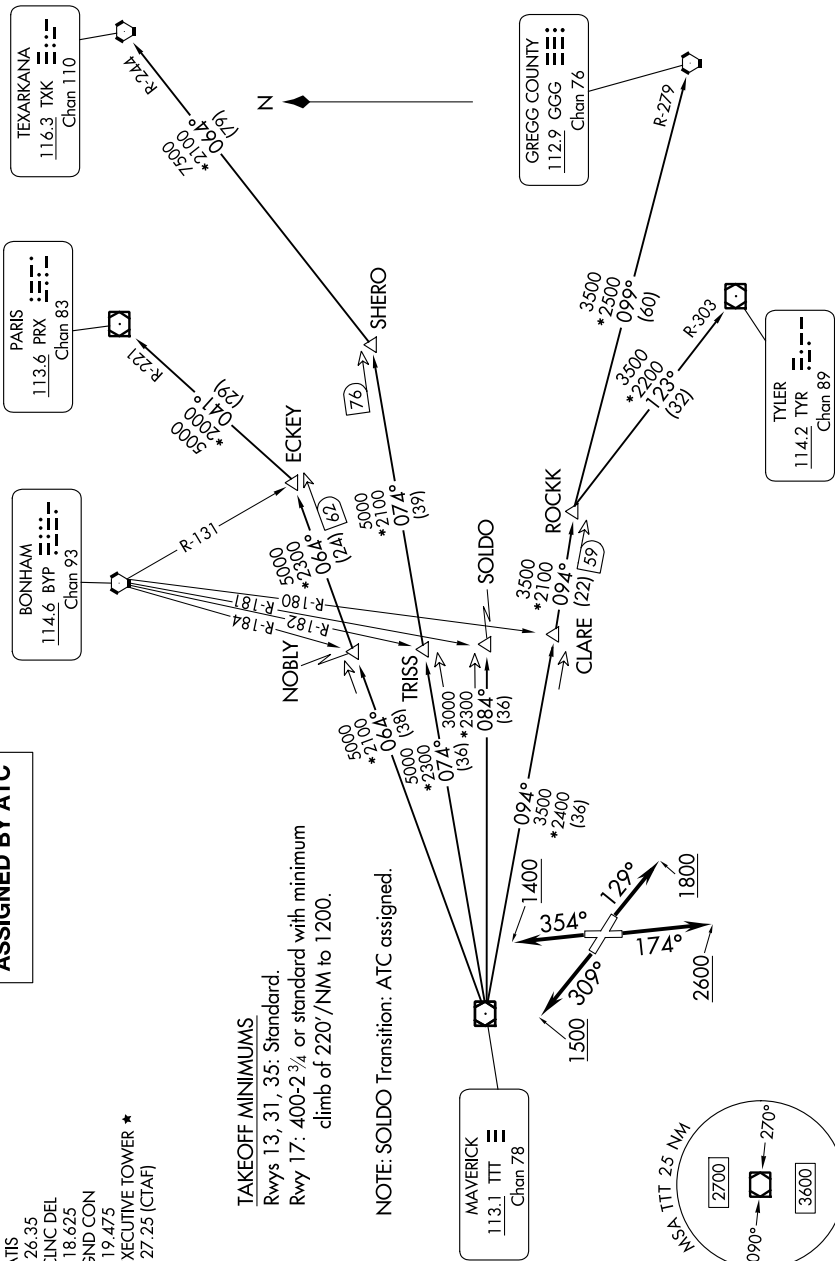
LONE STAR DEP CON
125.2 343.65
ATIS
126.35
CINC DEL
118.625
GND CON
119.475
EXECUTIVE TOWER ★
127.25 (CTAF)

TAKEOFF MINIMUMS

Rwys 13, 31, 35: Standard.
Rwy 17: 400-2 3/4 or standard with minimum
climb of 220'/NM to 1200.

NOTE: SOLDO Transition: ATC assigned.

RADAR and DME required.



(CONTINUED ON FOLLOWING PAGE)

SC-2, 31 OCT 2024 to 28 NOV 2024

GARLAND FIVE DEPARTURE (GARL5.TTT) 25JAN24

NOTE: Chart not to scale.