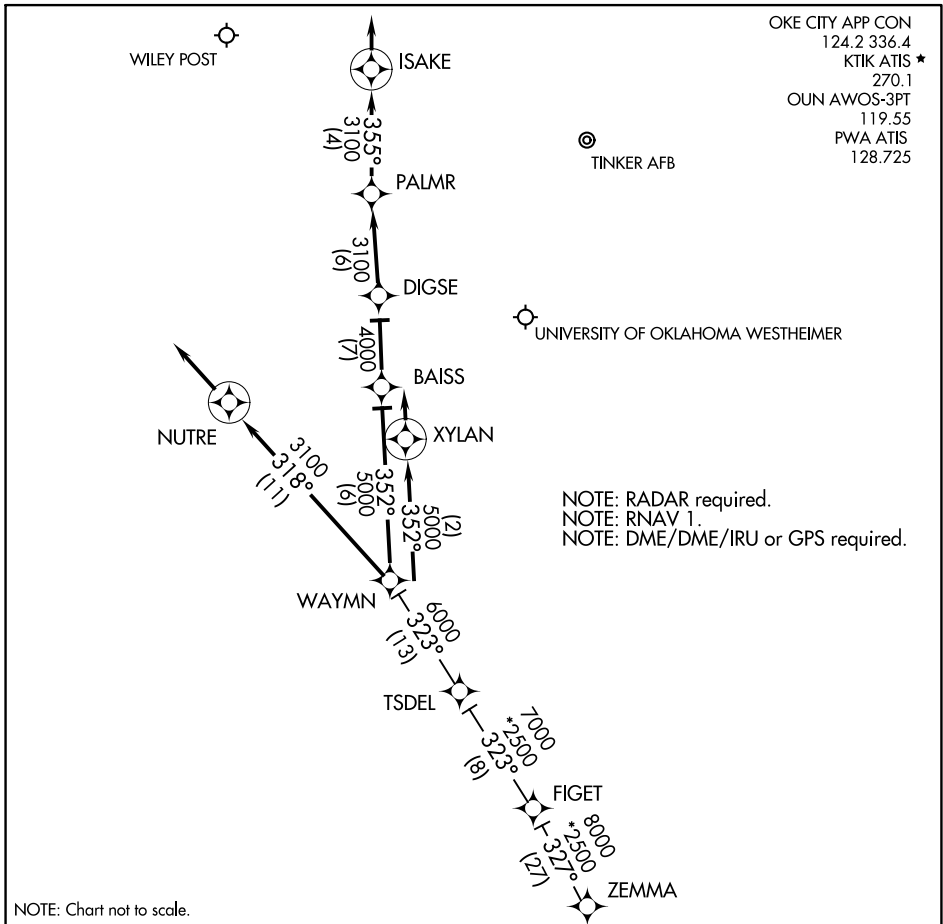


WAYMN ONE ARRIVAL (RNAV)

OKLAHOMA CITY, OKLAHOMA



SC-1, 31 OCT 2024 to 28 NOV 2024

SC-1, 31 OCT 2024 to 28 NOV 2024

NOTE: Chart not to scale.

ARRIVAL ROUTE DESCRIPTION

FIGET TRANSITION (FIGET.WAYMN1):

ZEMMA TRANSITION (ZEMMA.WAYMN1):

From TSDel on track 323° to WAYMN.

LANDING OUN: From WAYMN on track 352° to XYLAN, then on track 352°. Expect radar vectors to final approach course.

LANDING KTIK: From WAYMN on track 352° to BAISS, then on track 352°. Expect radar vectors to final approach course.

LANDING PWA RWY17L: From WAYMN on track 352° to BAISS, then on track 352° to DIGSE, then on track 352° to PALMR, then on track 355° to ISAKE, then on track 355°. Expect radar vectors to final approach course.

LANDING PWA RW35R: From WAYMN on track 318° to NUTRE, then on track 318°. Expect radar vectors to final approach course.

WAYMN ONE ARRIVAL (RNAV)

OKLAHOMA CITY, OKLAHOMA