

# TACAN RWY 07

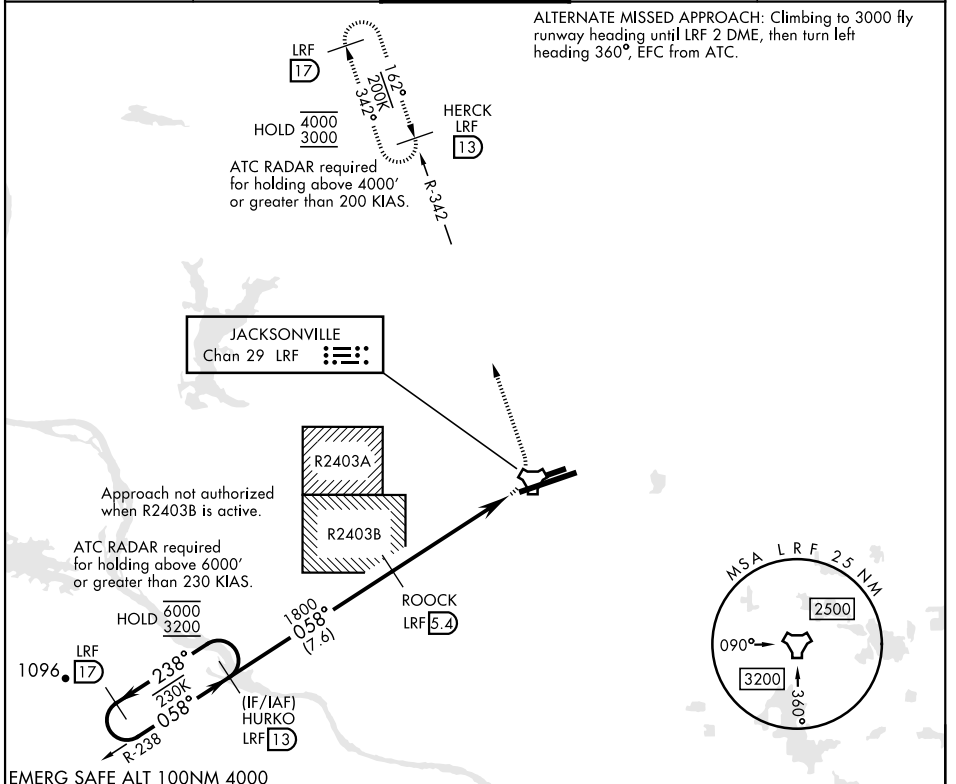
TACAN LRF Chan <b>29</b>	APCH CRS <b>058°</b>	Rwy ldg <b>12,007</b> TDZE <b>310</b> Arprt Elev <b>312</b>	[USAF]	LITTLE ROCK AFB (KLRF)
-----------------------------	-------------------------	---	--------	------------------------

▼ \* When ALS inop, increase CAT AB RVR to 55, vis to 1 mile; CAT CDE vis to 1/8 miles.  
 \*\* Circling not authorized S of Rwy 07-25.

ALSF-1 (A1)

MISSED APPROACH: Climbing left turn turn to 3000 to intcp LRF R-342 outbound to HERCK and hold as published.

ATIS★ <b>119.175 251.1</b>	APP CON/DEP CON <b>119.5 306.2</b>	TOWER <b>120.6 269.075</b>	GND CON <b>132.8 275.8</b>	CLNC DEL <b>253.5</b>
-------------------------------	---------------------------------------	-------------------------------	-------------------------------	--------------------------



	HURKO LRF 13		ROCK LRF 5.4		TACAN CUTUM 1		HERCK LRF 13		ELEV 312	TDZE 310
	6000	3200	238°	058°	058°	1800	2.83°	TCH 50	4.4 NM	0.5
CATEGORY	A	B	C	D	E					
S-07*	980/40 670 (700-3/4)		980-1 1/2	670	(700-1 1/2)					
CIRCLING**	980-1	668 (700-1)	980-1 7/8 668 (700-1 7/8)	1040-2 1/4 728 (800-2 1/4)	1040-2 1/2 728 (800-2 1/2)					
						HIRL Rwy 07-25 TDZL/CL Rwy 25				

# TACAN RWY 07

SC-1, 31 OCT 2024 to 28 NOV 2024

SC-1, 31 OCT 2024 to 28 NOV 2024