

TACAN RWY 25

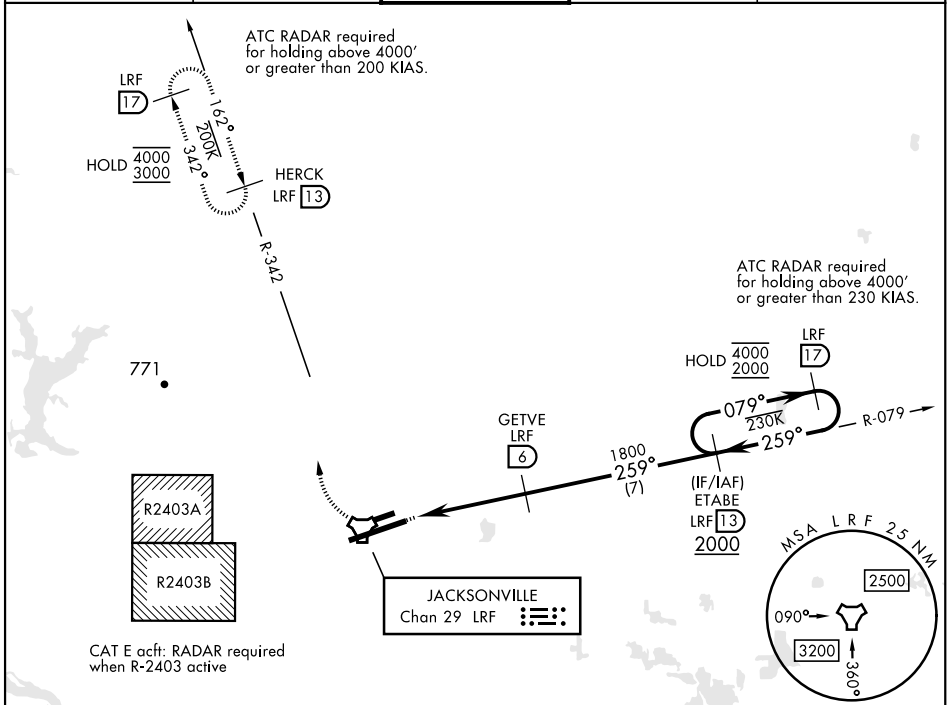
TACAN Chan 29	APCH CRS 259°	Rwy ldg 12,007 TDZE 301 Arprt Elev 312
-------------------------	-------------------------	---

AL-738 [USAF]

LITTLE ROCK AFB (KLRF)

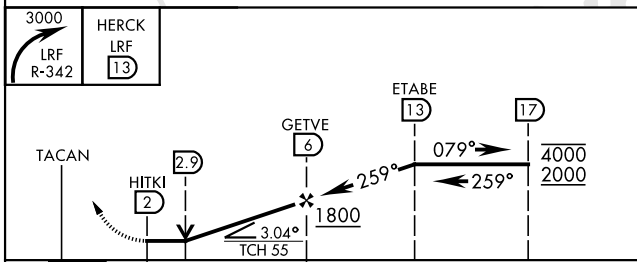
ALSIF-2
 MISSED APPROACH: Climbing right turn to 3000 to intercept LRF R-342 outbound to HERCK and hold as published.
ALTERNATE MISSED APPROACH: Climbing to 3000, fly runway heading until LRF 2 DME, then turn right heading 360°, EFC from ATC.

ATIS ★ 119.175 251.1	APP CON 119.5 306.2	TOWER 120.6 269.075	GND CON 132.8 275.8	CLNC DEL 253.5
--------------------------------	-------------------------------	-------------------------------	-------------------------------	--------------------------

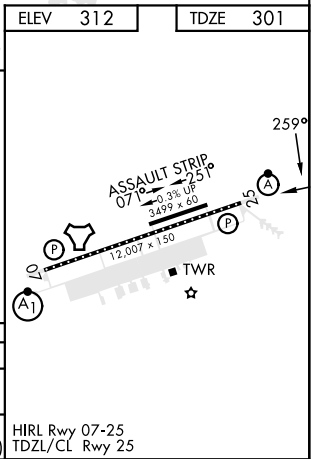


ELEV 312	TDZE 301
----------	----------

EMERG SAFE ALT 100 NM 4000



CATEGORY	A	B	C	D	E
S-25 *	800/24 499 (500-½)		800/50 499		(500-1)
CIRCLING **	800-1 488 (500-1)	920-1 608 (700-1)	920-1¾ 608 (700-1¾)	1040-2¼ 728 (800-2¼)	1040-2½ 728 (800-2½)



JACKSONVILLE, ARKANSAS
Orig 07SEP23

34°55'N-92°09'W

LITTLE ROCK AFB (KLRF)

TACAN RWY 25

SC-1, 31 OCT 2024 to 28 NOV 2024

SC-1, 31 OCT 2024 to 28 NOV 2024