

JACKSONVILLE, ARKANSAS

RNAV (GPS) RWY 7

LITTLE ROCK AFB (KLRF)

WAAS CH 97202 W07A	APCH CRS 072°	Rwy ldg TDZE 310 Arpt Elev 312
---------------------------------	-------------------------	--

-(USAF)

RNP APCH-GPS

ALSF-1

MISSED APPROACH: Climb to 1000 then climb left turn to 3000 direct HERCK and hold.

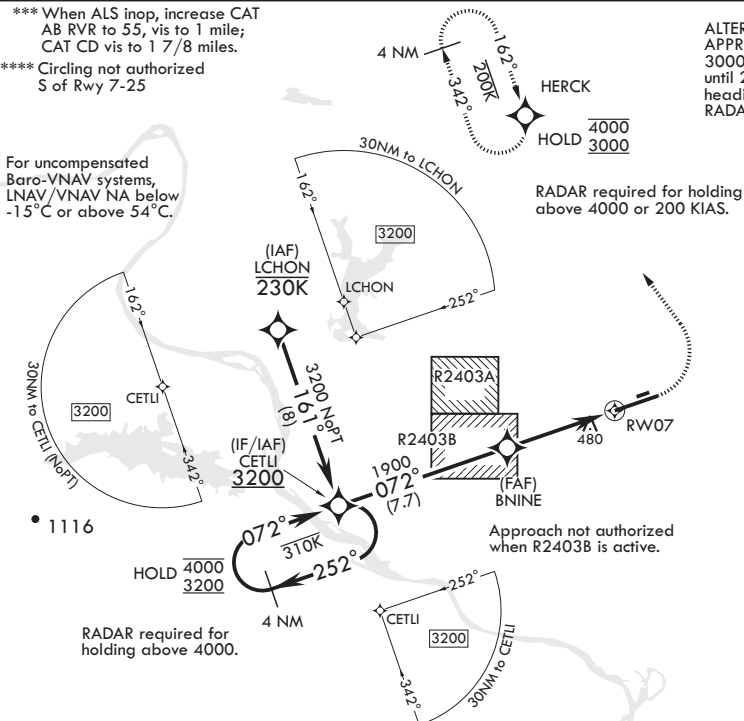
▲ * When ALS inop, increase RVR to 40, vis to 3/4 mile.
** When ALS inop, increase vis to 1 3/8 miles.

ATIS* 119.175 251.1	APP CON/DEP CON 119.5 306.2	TOWER 120.6 269.075	GND CON 132.8 275.8	CLNC DEL 253.5
-------------------------------	---------------------------------------	-------------------------------	-------------------------------	--------------------------

*** When ALS inop, increase CAT
AB RVR to 55, vis to 1 mile;
CAT CD vis to 1 7/8 miles.
**** Circling not authorized
S of Rwy 7-25

ALTERNATE MISSED
APPROACH: Climb to
3000, fly runway heading
until 2 DME then left turn
heading 360°, expect
RADAR vectors from ATC.

For uncompensated
Baro-VNAV systems,
LNAV/VNAV NA below
-15°C or above 54°C.

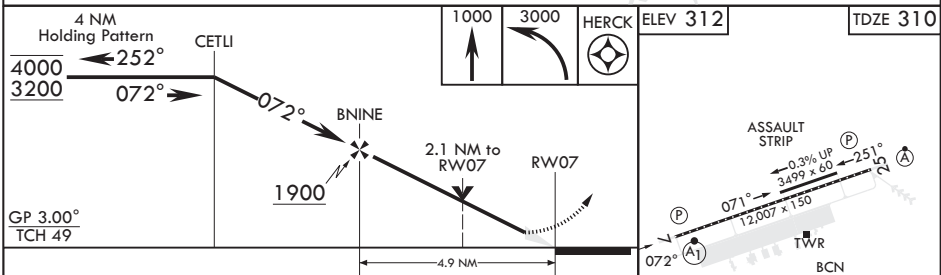


RADAR required for holding
above 4000 or 200 KIAS.

Approach not authorized
when R2403B is active.

RADAR required for
holding above 4000.

EMERG SAFE ALT 100 NM 4000



CATEGORY	A	B	C	D
LPV DA*	510/24	200	(200-1/2)	
LNAV/VNAV DA**	791/50	481	(500-1)	
LNAV MDA***	980/24 670 (700-1/2)	980-1 1/2 670 (700-1 1/2)		
☑ CIRCLING****	980-1 668 (700-1)	980-1 1/8 668 (700-1 1/8)	1040-2 1/4 728 (800-2 1/4)	

HIRL Rwy 7-25
TDZL/CL Rwy 25

JACKSONVILLE, ARKANSAS

34°55'N - 92°09'W

LITTLE ROCK AFB (KLRF)

Orig 11JUL24

RNAV (GPS) RWY 7

SC-1, 31 OCT 2024 to 28 NOV 2024

SC-1, 31 OCT 2024 to 28 NOV 2024