

ILS or LOC RWY 25

LOC I-TYV 109.9	APCH CRS 252°	Rwy ldg 12,007 TDZE 301 Arpt Elev 312
---------------------------	-------------------------	--

AL-738 [USAF]

LITTLE ROCK AFB (KLRF)

RNP APCH: RNAV1 - GPS or RADAR required.

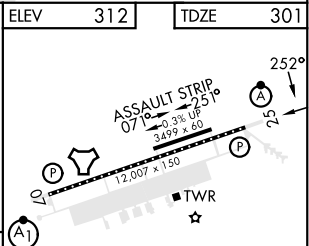
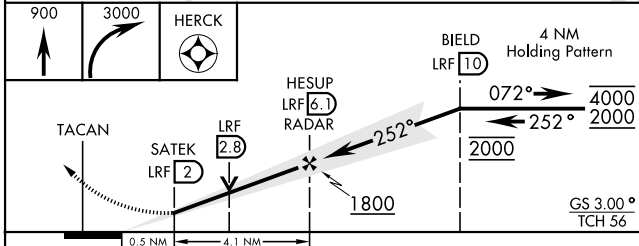
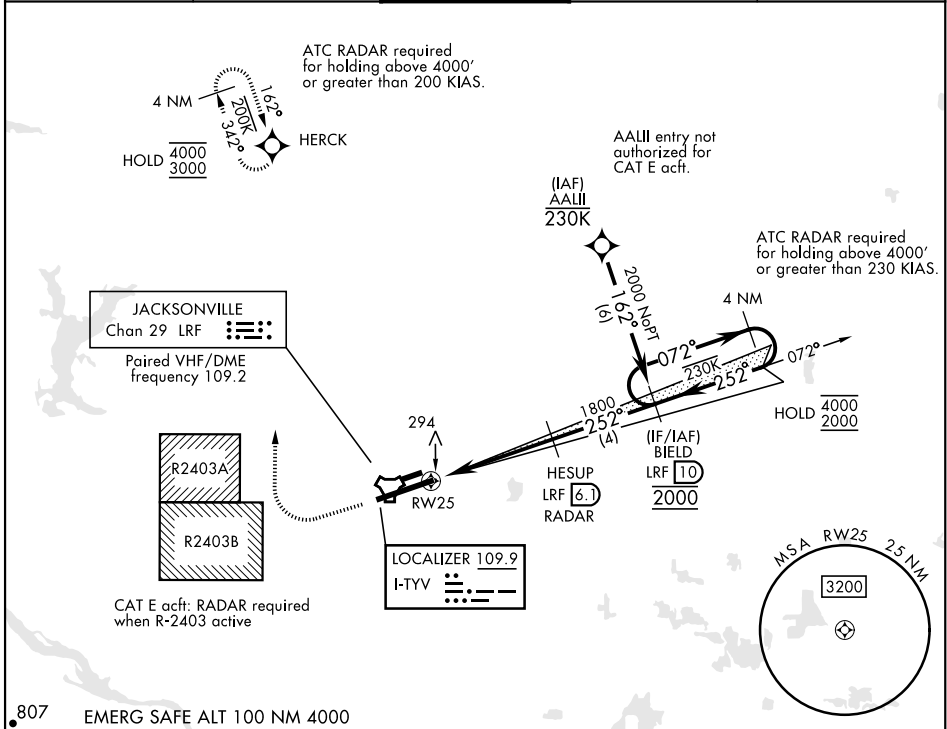
▼ *When TDZL/CL inop, increase RVR to 24. RVR 18 still authorized with use of FD, AP, or HUD to DA.
When ALS inop, increase RVR to 40, vis to ¾ mile.
** When ALS inop, increase CAT AB RVR to 55, vis to 1 mile, CAT CDE vis to 1½ miles.
*** Circling not authorized S of Rwy 7-25.

ALSf-2

MISSED APPROACH: Climb to 900 then climbing right turn to 3000 direct HERCK and hold as published.

ALTERNATE MISSED APPROACH: Climbing to 3000 fly runway heading until LRF 2 DME, then turn right heading 360°, EFC from ATC.

ATIS ★ 119.175 251.1	APP CON 119.5 306.2	TOWER 120.6 269.075	GND CON 132.8 275.8	CLNC DEL 253.5
--------------------------------	-------------------------------	-------------------------------	-------------------------------	--------------------------



EMERG SAFE ALT 100 NM 4000	900	3000	HERCK	ELEV 312	TDZE 301
TACAN	SATEK LRF 2	LRF 2.8	HESUP LRF 6.1 RADAR	BIELD LRF 10	4 NM Holding Pattern
0.5 NM	4.1 NM	1800	252°	252°	4000
					2000
					GS 3.00°
					TCH 56
CATEGORY	A	B	C	D	E
S-ILS 25*	501/18		200	(200-½)	
S-LOC 25**	760/24	459 (500-½)	760/45	459	(500-¾)
CIRCLING ***	780-1 468 (500-1)	920-1 608 (700-1)	920-1¼ 608 (700-1¼)	1040-2¼ 728 (800-2¼)	1040-2½ 728 (800-2½)

HIRL Rwy 07-25 TDZL/CL Rwy 25					
FAF to MAP 4.1 NM					
Knots	60	90	120	150	180
Min:Sec	4:06	2:44	2:03	1:38	1:22

ILS or LOC RWY 25

SC-1, 31 OCT 2024 to 28 NOV 2024

SC-1, 31 OCT 2024 to 28 NOV 2024