

PENSACOLA, FLORIDA

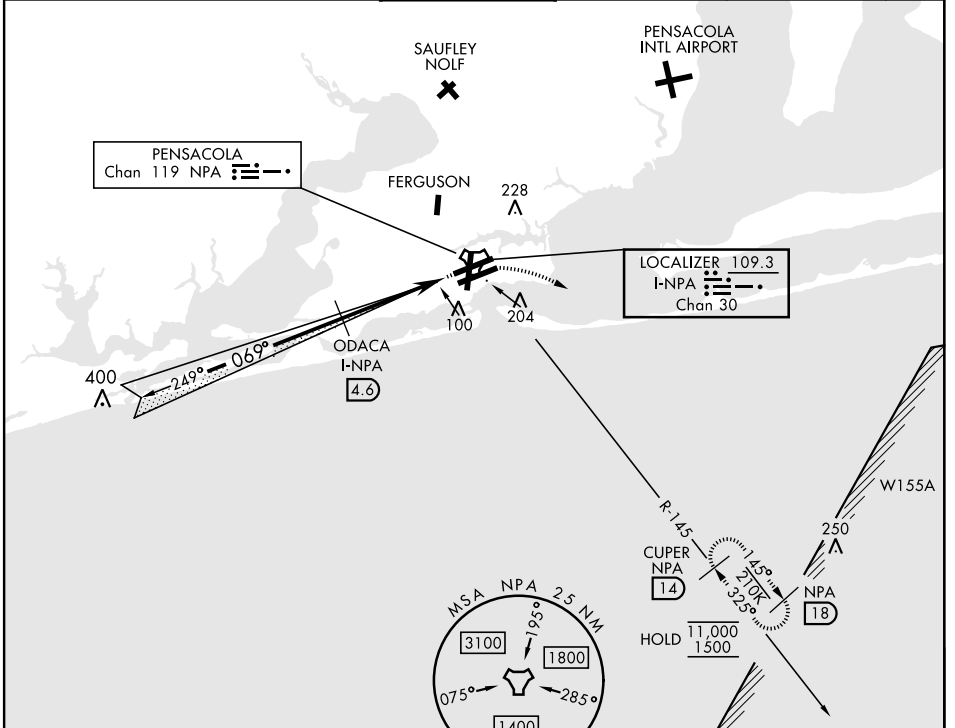
# ILS Z or LOC Z RWY 7L

LOC/DME I-NPA <b>109.3</b> Chan <b>30</b>	APCH CRS <b>069°</b>	Rwy Idg TDZE Arprt Elev <b>8001</b> <b>23</b> <b>28</b>
---	-------------------------	--

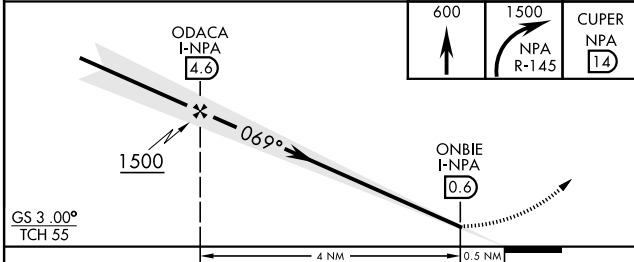
[USN] PENSACOLA NAS (FORREST SHERMAN FLD) (KNPA)

RADAR, TACAN, and DME required.		ALS-F1 	MISSED APPROACH: Climb to 600. Then climbing right turn to 1500 via NPA R-145 to CUPER and hold.
* When ALS inop, increase vis to 3/4 mile. ** When ALS inop, increase vis to 1 mile			

ATIS <b>124.35 266.8</b>	APP CON <b>120.65 270.8</b>	SHERMAN TOWER <b>120.7 340.2</b>	GND CON <b>121.7 336.4</b>	CLNC DEL <b>134.1 268.7</b>	ASR/ PAR
-----------------------------	--------------------------------	-------------------------------------	-------------------------------	--------------------------------	-------------

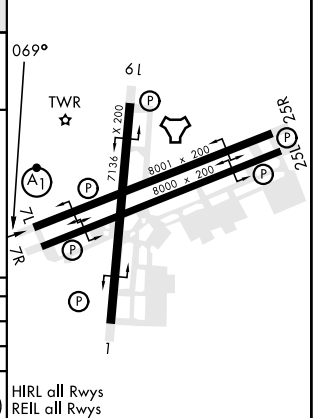


EMERG SAFE ALT 100 NM 3100



GS 3.00° TCH 55					
CATEGORY	A	B	C	D	E
S-ILS 7L*		223-1/2	200	(200-1/2)	
S-LOC 7L**		360-1/2	337	(400-1/2)	
CIRCLING	520-1	492 (500-1)	540-1 1/2 512 (600-1 1/2)	600-2 572 (600-2)	640-2 1/4 612 (700-2 1/4)

ELEV	28	TDZE	23
------	----	------	----



PENSACOLA, FLORIDA  
Amdt 4 18APR24

30° 21' N-87° 19' W

PENSACOLA NAS (FORREST SHERMAN FLD) (KNPA)

# ILS Z or LOC Z RWY 7L

SE-3, 31 OCT 2024 to 28 NOV 2024

SE-3, 31 OCT 2024 to 28 NOV 2024