

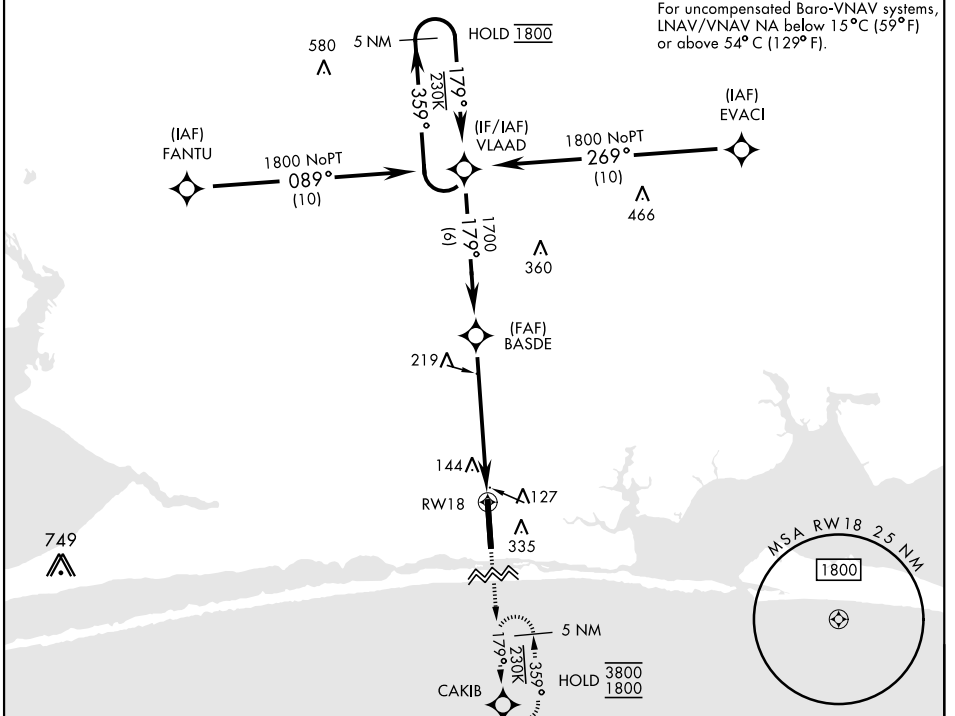
MARY ESTHER, FLORIDA

RNAV (GPS) RWY 18

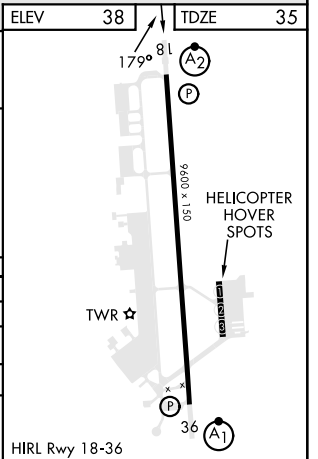
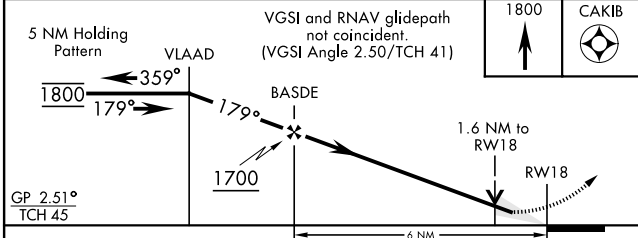
SBAS Chan 57304 W18A	APCH CRS 179°	Rwy ldg 9600 TDZE 35 Arpt Elev 38	[USAF]	HURLBURT FLD (KHRT)
--	-------------------------	--	--------	---------------------

RNP APCH ▼ *When ALS inop, increase vis to 1½ miles. **When ALS inop, increase CAT AB vis to 1 mile; CAT CDE vis to 1½ miles.	SALSF 	MISSED APPROACH: Climb to 1800 direct CAKIB and hold.
---	-----------	---

ATIS 134.475 360.675	EGLIN APP CON 125.1 281.45 (271°- 089°) 132.1 360.6 (090°- 270°)	TOWER 126.5 351.675	GND CON 123.975 275.8
--------------------------------	--	-------------------------------	---------------------------------



EMERG SAFE ALT 100 NM 3700	ELEV 38	TDZE 35
----------------------------	---------	---------



CATEGORY	A	B	C	D	E
LPV DA	285-¾		250	(300-¾)	
LNAV/VNAV DA*	427-7/8		392	(400-7/8)	
LNAV MDA**	500-¾	465 (500-¾)	500-1/8	465	(500-1/8)
CIRCLING	640-1	602 (700-1)	640-1¾ 602 (700-1¾)	840-2½ 802 (900-2½)	840-2¾ 802 (900-2¾)

MARY ESTHER, FLORIDA 30° 26' N-86° 41' W HURLBURT FLD (KHRT)

Amtd 2 14JUL22

RNAV (GPS) RWY 18

SE-3, 31 OCT 2024 to 28 NOV 2024

SE-3, 31 OCT 2024 to 28 NOV 2024