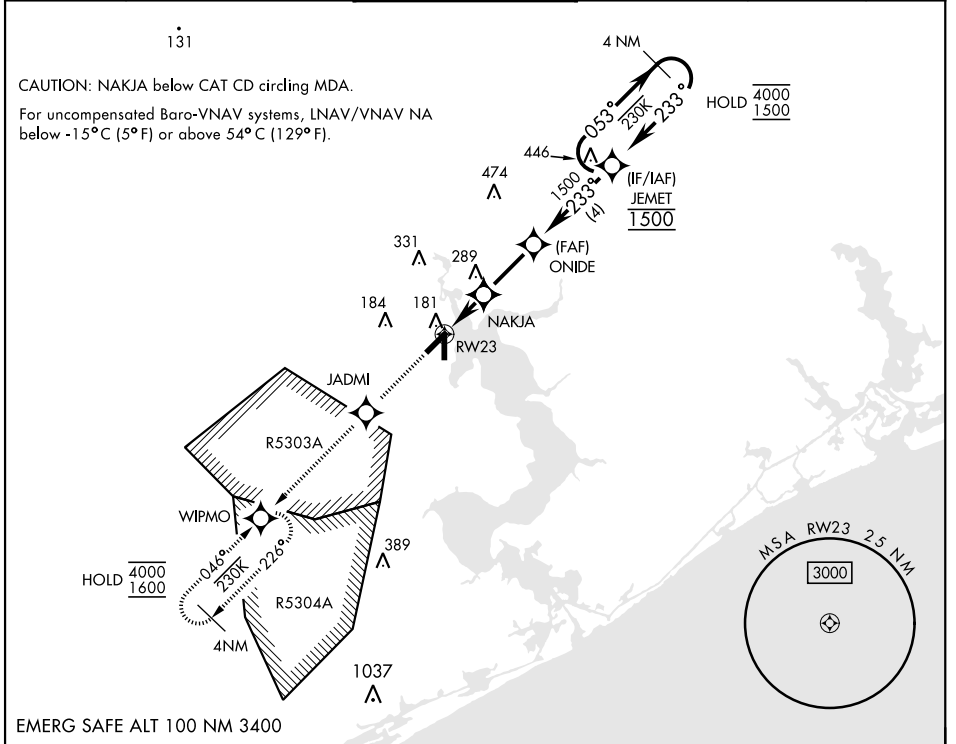


RNAV (GPS) RWY 23

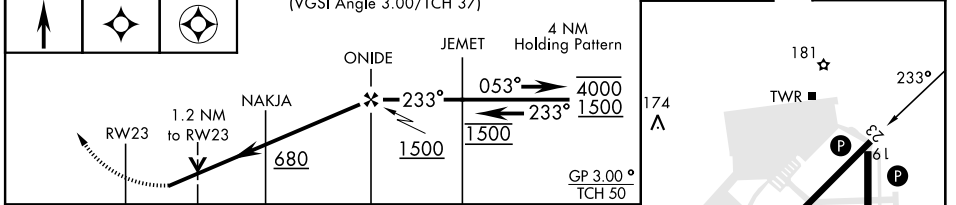
WAAS Chan 92556 W23A	APCH CRS 233°	Rwy Idg TDZE 24 Arprt Elev 26	5125	[USN]	NEW RIVER MCAS (MC CUTCHEON FLD) (KNCA)
--	-------------------------	---	-------------	-------	---

RNP APCH	MISSED APPROACH: Climb to 1600 direct JADMI, track 233° to WIPMO and hold.
RADAR required	

ATIS ★ 288.325	CHERRY POINT APP CON 119.35 377.175	TOWER ★ 134.95 (CTAF) 0★ 360.2	GND CON 121.8 254.275	CLNC DEL 269.25	ASR/PAR
--------------------------	---	---	---------------------------------	---------------------------	---------



1600	JADMI	WIPMO	VGSI and descent angles not coincident (VGSI Angle 3.00/TCH 37)	ELEV 26	TDZE 24
------	-------	-------	---	---------	---------



CATEGORY	A	B	C	D
LPV DA	224- ³ / ₄		200	(200- ³ / ₄)
LNAV/VNAV DA	312- ⁷ / ₈ 288 (300- ⁷ / ₈)	323- ⁷ / ₈ 299 (300- ⁷ / ₈)	331- ⁷ / ₈ 307 (400- ⁷ / ₈)	342- ⁷ / ₈ 318 (400- ⁷ / ₈)
LNAV MDA	440-1 416 (500-1)	440-1 ¹ / ₈ 416 (500-1 ¹ / ₈)		
CIRCLING	500-1 474 (500-1)	700-2 674 (700-2)		700-2 ¹ / ₄ 674 (700-2 ¹ / ₄)

HIRL all rwys 0

RNAV (GPS) RWY 23

SE-2, 03 OCT 2024 to 31 OCT 2024

SE-2, 03 OCT 2024 to 31 OCT 2024