

JACKSONVILLE, NORTH CAROLINA

# ILS or LOC RWY 1

LOC I-NCA <b>111.10</b> Chan <b>48</b>	APCH CRS <b>008°</b>	Rwy Idg TDZE <b>4789</b> <b>24</b> Arpt Elev <b>26</b>
--	-------------------------	--

[USN]

NEW RIVER MCAS (MC CUTCHEON FLD) (KNCA)

RADAR, TACAN required. DME required.



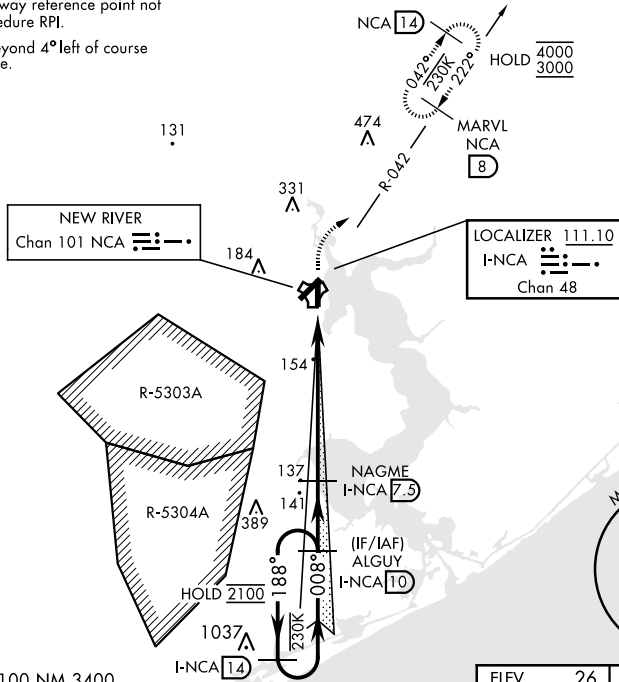
MISSED APPROACH: Climb to 500, then climbing right turn to 3000, intercept NCA R-042 to MARVL and hold, continue climb-in-hold to 3000.

\*When ALS inop, increase CAT AB vis to 1 mile, CAT CD vis to 1 1/8 miles.

ATIS ★ <b>288.325</b>	CHERRY POINT APP CON <b>119.35 377.175</b>	TOWER ★ <b>134.95(CTAF) 0★ 360.2</b>	GND CON <b>121.8 254.275</b>	CLNC DEL <b>269.25</b>	ASR/PAR
--------------------------	---	---	---------------------------------	---------------------------	---------

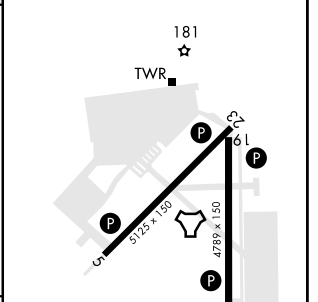
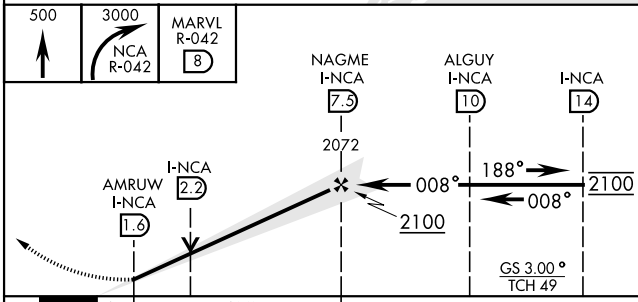
CAUTION: VGSI runway reference point not coincident with procedure RPI.

Rwy 1 GS unused beyond 4° left of course and 7° right of course.



EMERG SAFE ALT 100 NM 3400

ELEV	26	TDZE	24
------	----	------	----



CATEGORY	A	B	C	D
S-ILS 1	224-3/4		200	(200-3/4)
S-LOC 1 *	420-3/4	396 (400-3/4)	420-7/8	396 (400-7/8)
CIRCLING	500-1	474 (500-1)	700-2 674 (700-2)	700-2 1/4 674 (700-2 1/4)

HIRL all rwy's					
FAF to MAP 5.9 NM					
Knots	60	90	120	150	180
Min:Sec	5:54	3:56	2:57	2:22	1:58

JACKSONVILLE, NORTH CAROLINA

34° 43' N-77° 26' W

NEW RIVER MCAS (MC CUTCHEON FLD) (KNCA)

Amdt 4 28DEC23

# ILS or LOC RWY 1

SE-2, 31 OCT 2024 to 28 NOV 2024

SE-2, 31 OCT 2024 to 28 NOV 2024