

VORTAC OSH <b>116.75</b> Chan <b>114 (Y)</b>	APP CRS <b>186°</b>	Rwy Idg <b>8002</b> TDZE <b>794</b> Apt Elev <b>808</b>
--	------------------------	---

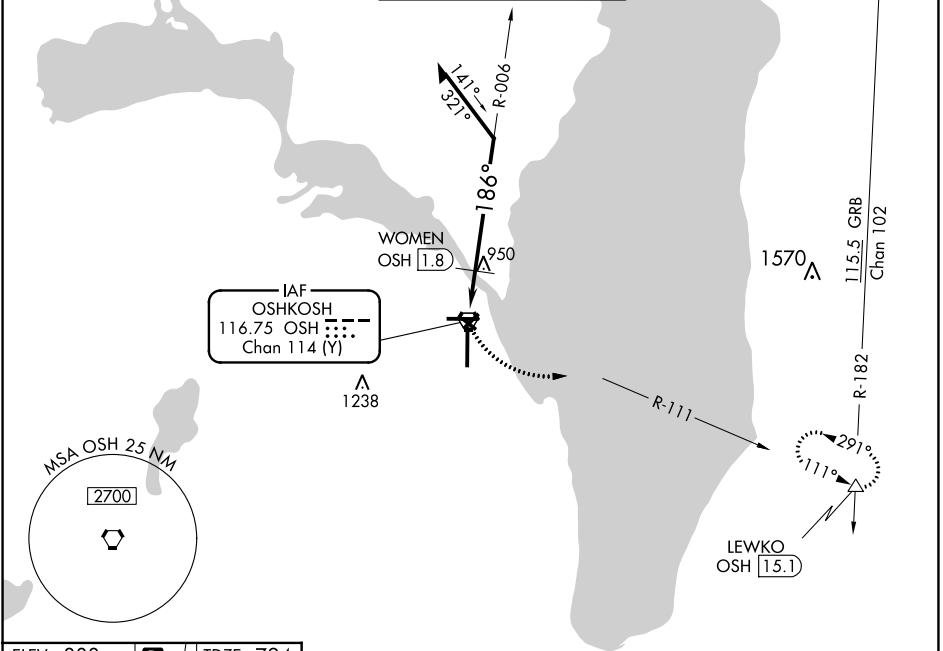
# VOR RWY 18

WITTMAN RGNL (OSH)

**⚠** Circling to Rwy 5, 23, and 31 NA at night. VDP NA with Fond Du Lac County altimeter setting. When local altimeter setting not received, use Fond Du Lac altimeter setting and increase all MDA 40 feet; increase WOMEN fix minimums Circling Cat D visibility ¼ mile. Helicopter visibility reduction below ¾ SM NA.

**MISSED APPROACH:** Climbing left turn to 3000 on OSH VORTAC R-111 to LEWKO INT/OSH 15.1 DME and hold.

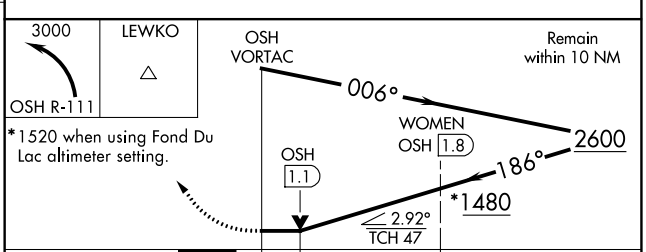
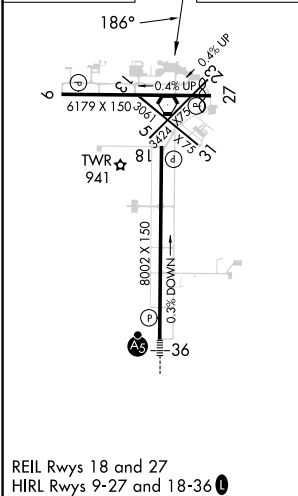
ATIS <b>125.9</b>	MILWAUKEE APP CON <b>127.0 263.075</b>	OSHKOSH TOWER ★ <b>118.5 (CTAF) 290.9</b>	GND CON <b>132.3</b>	UNICOM <b>122.95</b>
----------------------	---	--	-------------------------	-------------------------



EC-3, 03 OCT 2024 to 31 OCT 2024

EC-3, 03 OCT 2024 to 31 OCT 2024

ELEV 808	<b>D</b>	TDZE 794
----------	----------	----------



CATEGORY	A	B	C	D
S-18	1480-1	686 (700-1)	1480-2	686 (700-2)
<b>C</b> CIRCLING	1480-1	672 (700-1)	1480-2	1480-2½ 672 (700-2½)
<b>WOMEN FIX MINIMUMS</b>				
S-18	1260-1	466 (500-1)	1260-1⅓	466 (500-1⅓)
<b>C</b> CIRCLING	1280-1 472 (500-1)	1300-1 492 (500-1)	1360-1½ 552 (600-1½)	1440-2 632 (700-2)