

WAAS CH 82105 W18A	APP CRS 176°	Rwy Idg TDZE Apt Elev	5150 720 720
--	------------------------	-----------------------------	---

RNAV (GPS) RWY 18

OKMULGEE RGNL/PAUL AND BETTY ABBOTT FLD (OKM)

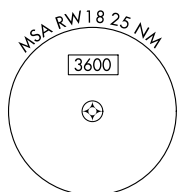
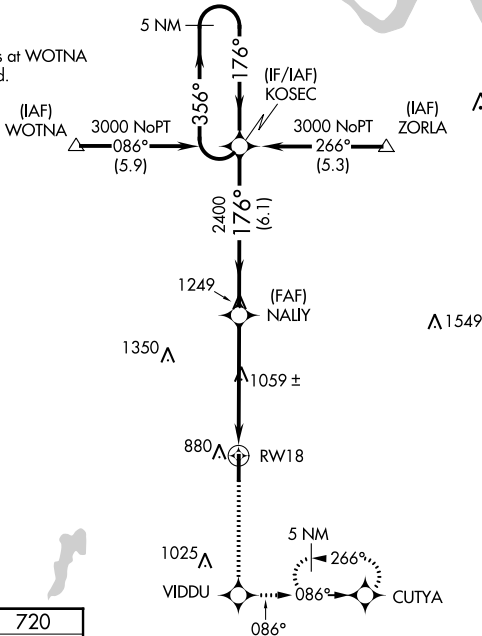
⚠ When local altimeter setting not received, use Tulsa Intl altimeter setting: Increase LPV DA to 1050 feet; increase all MDAs 80 feet and visibility Cat C ¼ SM. DME/DME RNP-0.3 NA. VDP NA with Tulsa Intl altimeter setting.



MISSED APPROACH: Climb to 3000 direct VIDDU and left turn via 086° track to CUTYA and hold, continue climb-in-hold to 3000.

AWOS-3PT 118.225	TULSA APP CON 119.85 338.3	UNICOM 123.0 (CTAF) 0
----------------------------	--------------------------------------	---------------------------------

Procedure NA for arrivals at WOTNA on V532 northwest bound.



SC-1, 21 MAR 2024 to 18 APR 2024

SC-1, 21 MAR 2024 to 18 APR 2024

ELEV 720	TDZE 720
----------	----------

MIRL Rwy 18-36 0

3000	VIDDU	086° tr	CUTYA	KOSEC	5 NM Holding Pattern
*LNAV only.		*1.7 NM to RWY 18	NALY	356° → 3000	← 176°
RWY 18		1.7 NM	3.3 NM	6.1 NM	GP 3.00° TCH 51
CATEGORY	A	B	C	D	
LPV DA	970-½ 250 (300-½)			NA	
LNAV MDA	1320-½	600 (600-½)	1320-1 600 (600-1)	NA	
C CIRCLING	1320-1 600 (600-1)	1340-1 620 (700-1)	1340-1¾ 620 (700-1¾)	NA	

RNAV (GPS) RWY 18