

WAAS CH <b>86400</b> <b>W35A</b>	APP CRS <b>350°</b>	Rwy Idg TDZE Apt Elev	<b>4007</b> <b>49</b> <b>49</b>
--	------------------------	-----------------------------	---------------------------------------

# RNAV (GPS) RWY 35

NORWOOD MEML (OWD)

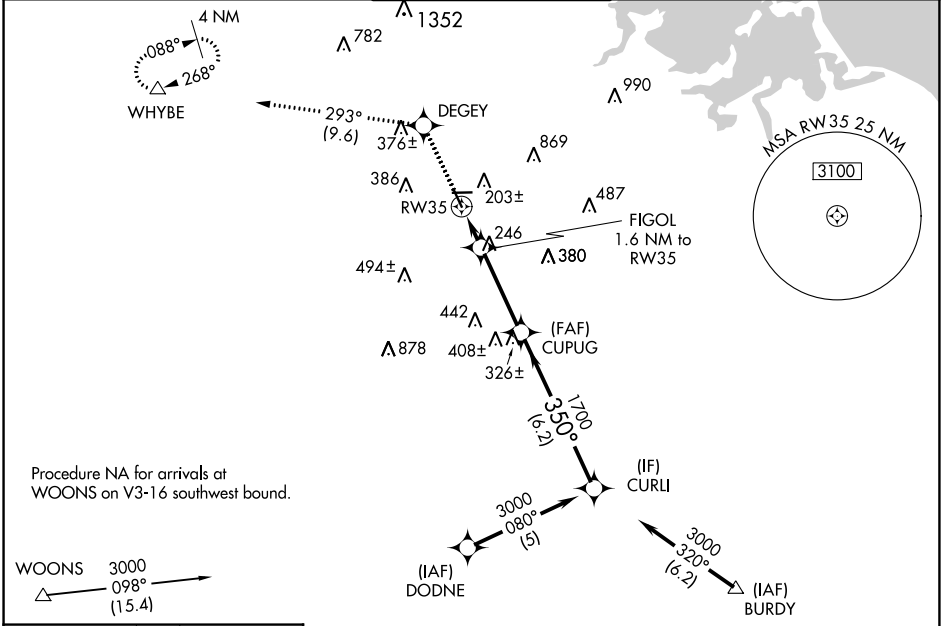
RNP APCH.

**▼** Rwy 35 helicopter visibility reduction below  $\frac{3}{4}$  SM NA. For inop ALS, increase LPV all Cats visibility to  $\frac{7}{8}$  SM. For uncompensated Baro-VNAV systems, LNAV/VNAV NA below -15°C or above 48°C. Circling NA at night.

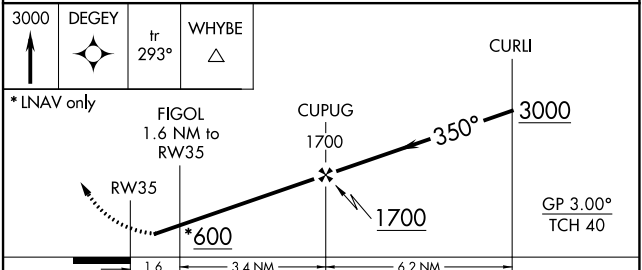
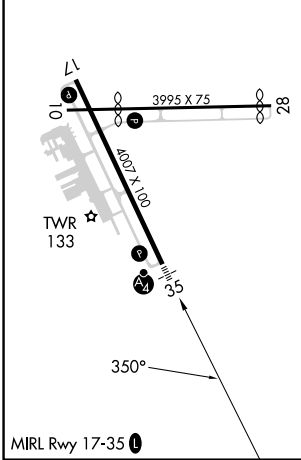


**MISSED APPROACH:** Climb to 3000 direct DEGEY and on track 293° to WHYBE and hold, continue climb-in-hold to 3000.

ATIS <b>119.95</b>	BOSTON APP CON <b>124.1 263.1</b>	NORWOOD TOWER ★ <b>126.0 (CTAF) 0</b>	GND CON <b>121.8</b>	CLNC DEL <b>121.8</b>
-----------------------	--------------------------------------	--	-------------------------	--------------------------



ELEV 49	<b>D</b>	TDZE 49
---------	----------	---------



CATEGORY	A	B	C	D
LPV DA	344- $\frac{3}{4}$		295 (300- $\frac{3}{4}$ )	
LNAV/VNAV DA	594-1 $\frac{3}{8}$		545 (600-1 $\frac{3}{8}$ )	
LNAV MDA	580- $\frac{3}{4}$	531 (600- $\frac{3}{4}$ )	580-1 $\frac{1}{4}$	531 (600-1 $\frac{1}{4}$ )
<b>C</b> CIRCLING	600-1 551 (600-1)	700-1 651 (700-1)	1220-3	1171 (1200-3)

NE-1, 08 AUG 2024 to 05 SEP 2024

NE-1, 08 AUG 2024 to 05 SEP 2024