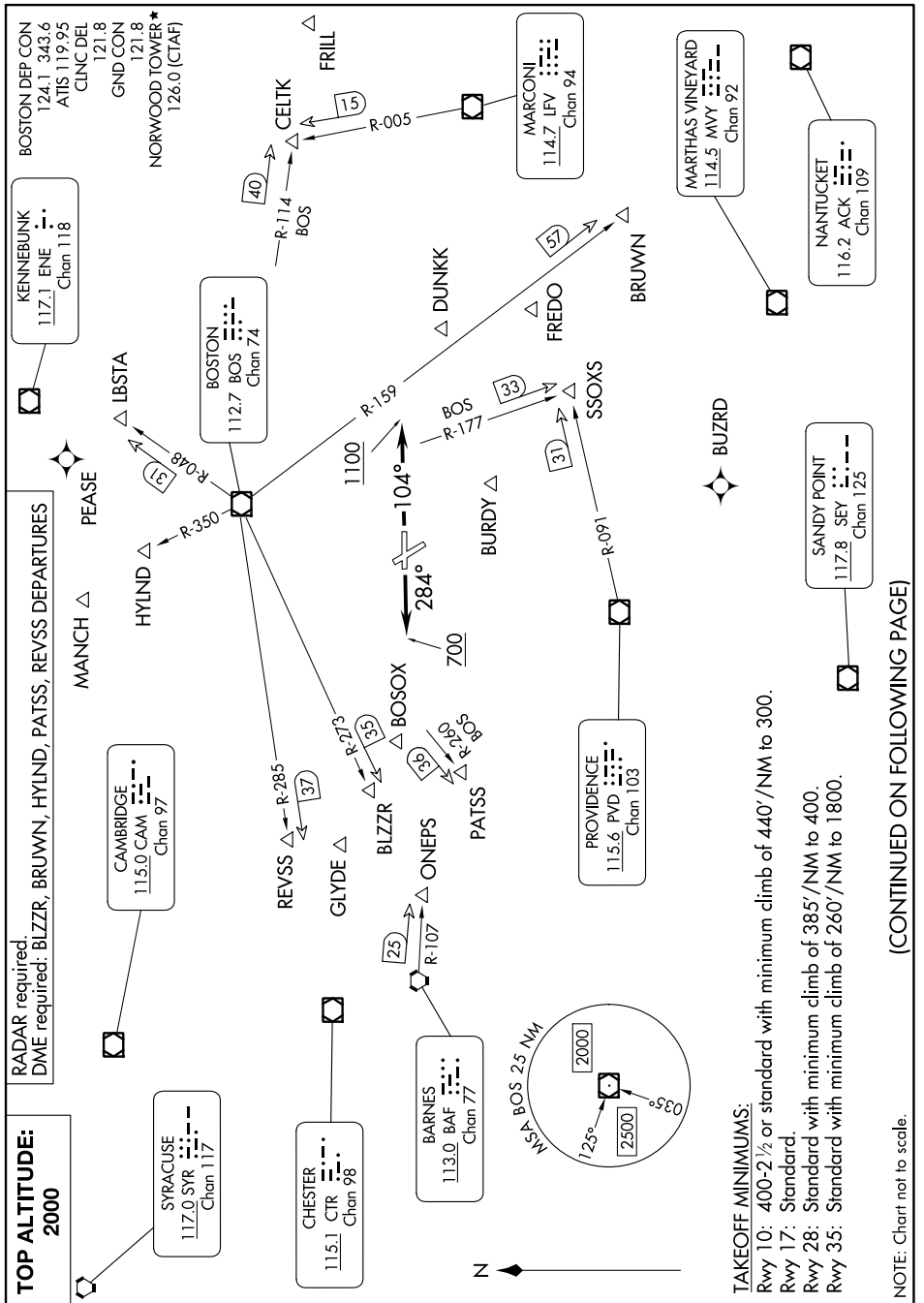


# NORWOOD FIVE DEPARTURE

NE-1, 08 AUG 2024 to 05 SEP 2024



**TAKEOFF MINIMUMS:**  
Rwy 10: 400-2 1/2 or standard with minimum climb of 440'/NM to 300.  
Rwy 17: Standard.  
Rwy 28: Standard with minimum climb of 385'/NM to 400.  
Rwy 35: Standard with minimum climb of 260'/NM to 1800.

(CONTINUED ON FOLLOWING PAGE)

NE-1, 08 AUG 2024 to 05 SEP 2024

# NORWOOD FIVE DEPARTURE