

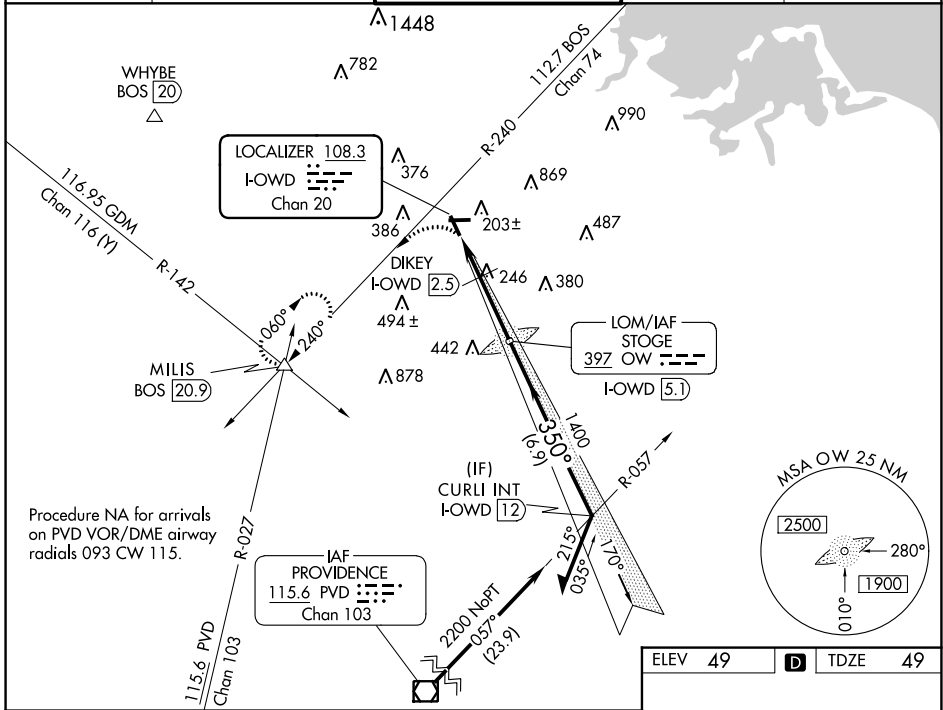
LOC/DME I-OWD 108.3 Chan 20	APP CRS 350°	Rwy Idg 4007 TDZE 49 Apt Elev 49
--	------------------------	---

LOC RWY 35

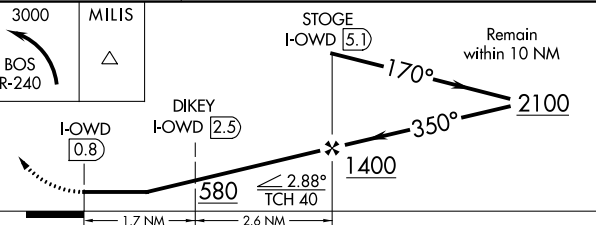
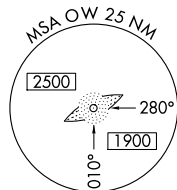
NORWOOD MEML (OWD)

ADF or DME required.	MALSF	MISSED APPROACH: Climbing left turn to 3000 and BOS VOR/DME R-240 to MILIS INT/20.9 DME and hold, continue climb-in-hold to 3000.
<p>⚠ Helicopter visibility reduction below 3/4 SM NA. DIKEY fix minimums: For inop ALS, increase S-35 Cat C/D visibility to 1 3/8 SM. Circling NA at night.</p>		

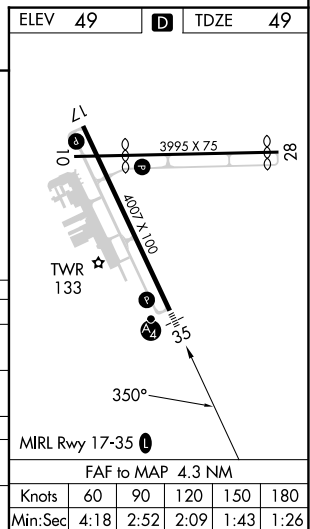
ATIS 119.95	BOSTON APP CON 124.1 263.1	NORWOOD TOWER ★ 126.0 (CTAF) 0	GND CON 121.8	CLNC DEL 121.8
-----------------------	--------------------------------------	--	-------------------------	--------------------------



Procedure NA for arrivals on PVD VOR/DME airway radials 093 CW 115.



CATEGORY	A	B	C	D
S-35	580-3/4	531 (600-3/4)	580-1 1/4	531 (600-1 1/4)
C CIRCLING	600-1 551 (600-1)	700-1 651 (700-1)	1220-3	1171 (1200-3)
DIKEY FIX MINIMUMS				
S-35	500-3/4	451 (500-3/4)	500-1	451 (500-1)
C CIRCLING	600-1 551 (600-1)	700-1 651 (700-1)	1220-3	1171 (1200-3)



NE-1, 03 OCT 2024 to 31 OCT 2024

NE-1, 03 OCT 2024 to 31 OCT 2024