

# TACAN Y RWY 23

TACAN NRB Chan <b>51</b>	APCH CRS <b>221°</b>	Rwy Ldg TDZE Arpt Elev <b>8001</b> <b>15</b> <b>15</b>
-----------------------------	-------------------------	--

[USN]

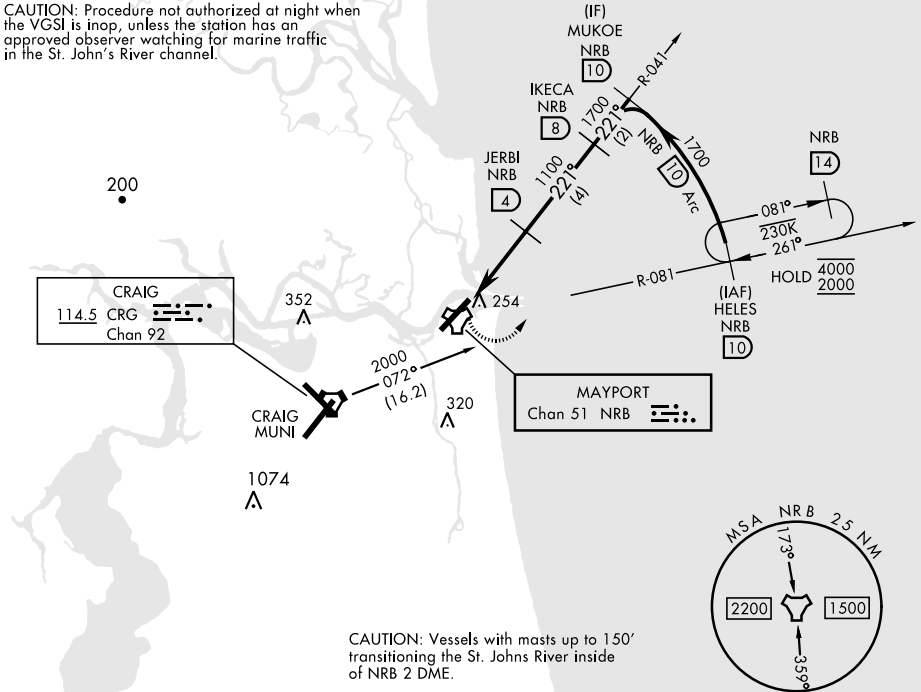
MAYPORT NS (ADM DAVID L. MC DONALD FLD) (KNRB)

<p>▼ Visibility reduction by helicopters NA.</p>	<p>MISSED APPROACH: Climbing left turn to 2000 via NRB TACAN R-081 to HELES and hold.</p>
--	---

<p>ATIS ★ <b>236.775</b></p>	<p>JACKSONVILLE APP CON <b>124.9 308.4</b></p>	<p>TOWER ★ <b>118.75 239.30</b></p>	<p>GND CON <b>126.5 233.7</b></p>	<p>ASR/PAR</p>
----------------------------------	--	---	---------------------------------------	----------------

CRG feeder route requires turn in hold.

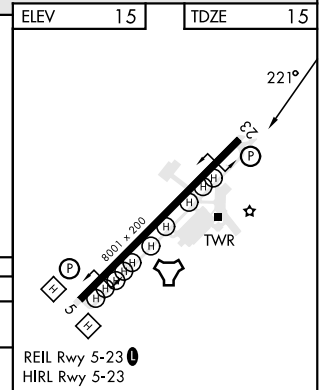
CAUTION: Procedure not authorized at night when the VGSI is inop, unless the station has an approved observer watching for marine traffic in the St. John's River channel.



CAUTION: Vessels with masts up to 150' transiting the St. Johns River inside of NRB 2 DME.

EMERG SAFE ALT 100 NM 2800

<p>2000 NRB R-081</p> <p>HELES NRB 10</p> <p>LEBAF NRB 1</p> <p>JERBI NRB 4</p> <p>IKECA NRB 8</p> <p>MUKOKE NRB 10</p> <p>3 NM</p>	<p>1100</p> <p>1700</p> <p>1700</p>			
<p>3</p> <p>3 NM</p>	<p>3.01°</p> <p>TCH 48</p>			
CATEGORY	A	B	C	D
S-23	520-1	505 (600-1)	520-1½ 505 (600-1½)	
CIRCLING	560-1	545 (600-1)	560-1½ 545 (600-1½)	620-2 605 (700-2)



# TACAN Y RWY 23

SE-3, 31 OCT 2024 to 28 NOV 2024

SE-3, 31 OCT 2024 to 28 NOV 2024