

MAYPORT, FLORIDA

# COPTER TACAN Z RWY 5

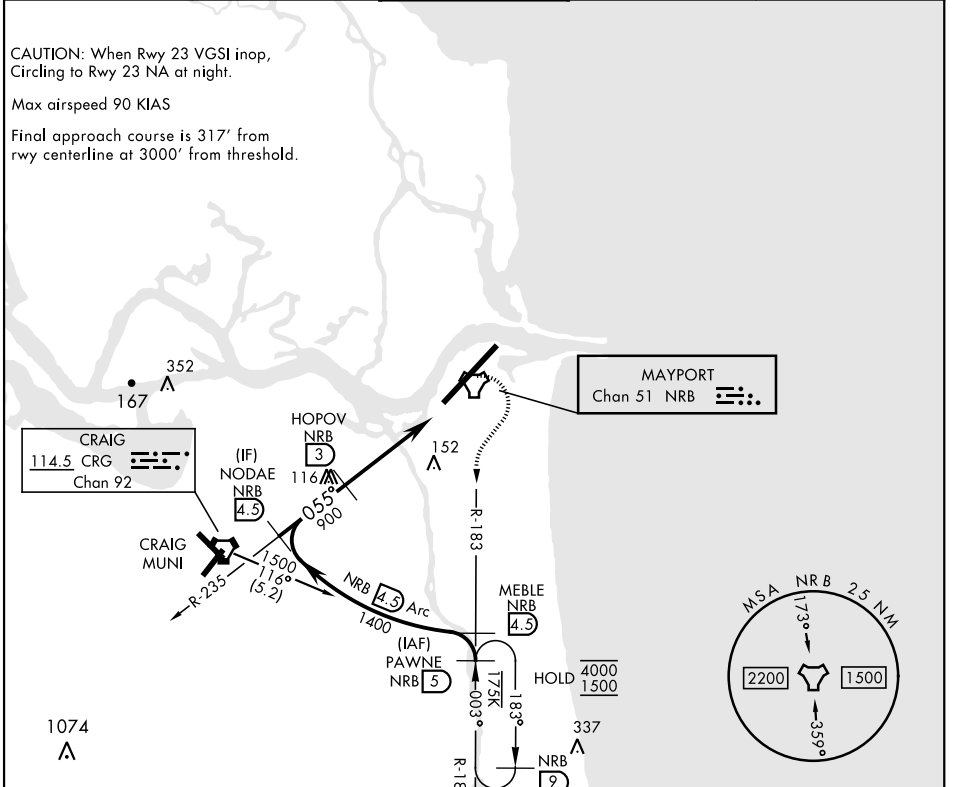
TACAN NRB Chan <b>51</b>	APCH CRS <b>055°</b>	Rwy Ldg TDZE 8001 12 Arpt Elev 15
-----------------------------	-------------------------	---

[USN]

MAYPORT NS (ADM DAVID L. MC DONALD FLD) (KNRB)

**MISSED APPROACH:** Climb to 500. Then climbing right turn to 1500 via NRB TACAN R-183 to PAWNE and hold.

ATIS ★ <b>236.775</b>	JACKSONVILLE APP CON <b>124.9 308.4</b>	TOWER ★ <b>118.75 239.30</b>	GND CON <b>126.5 233.7</b>	ASR/PAR
--------------------------	--	---------------------------------	-------------------------------	---------



EMERG SAFE ALT 100 NM 2800

PAWNE NRB 5	MEBLE NRB 4.5	NODAE NRB 4.5	HOPOV NRB 3	INEKE NRB 1.8	NRB TACAN	ELEV 15	TDZE 12
1500	1500	1400	900	3.30° TCH 48	2 NM		
CATEGORY						COPTER	
S-5	440-1/2	428	(500-1/2)				
<b>C</b> CIRCLING	560-1	545	(600-1)				
						REIL Rwy 5-23 HIRL Rwy 5-23	

MAYPORT, FLORIDA  
Amdt 5 05SEP24

30°23'N-81°25'W

MAYPORT NS (ADM DAVID L. MC DONALD FLD) (KNRB)

# COPTER TACAN Z RWY 5

SE-3, 31 OCT 2024 to 28 NOV 2024

SE-3, 31 OCT 2024 to 28 NOV 2024