

CAMP DOUGLAS, WISCONSIN

ILS or LOC/DME RWY 27

LOC I-VOK 108.5	APCH CRS 269°	Rwy Idg THRE Arprt Elev 9000 904 912	AL-714 [USAF]	VOLK FLD (KVOK)
---------------------------	-------------------------	--	---------------	-----------------

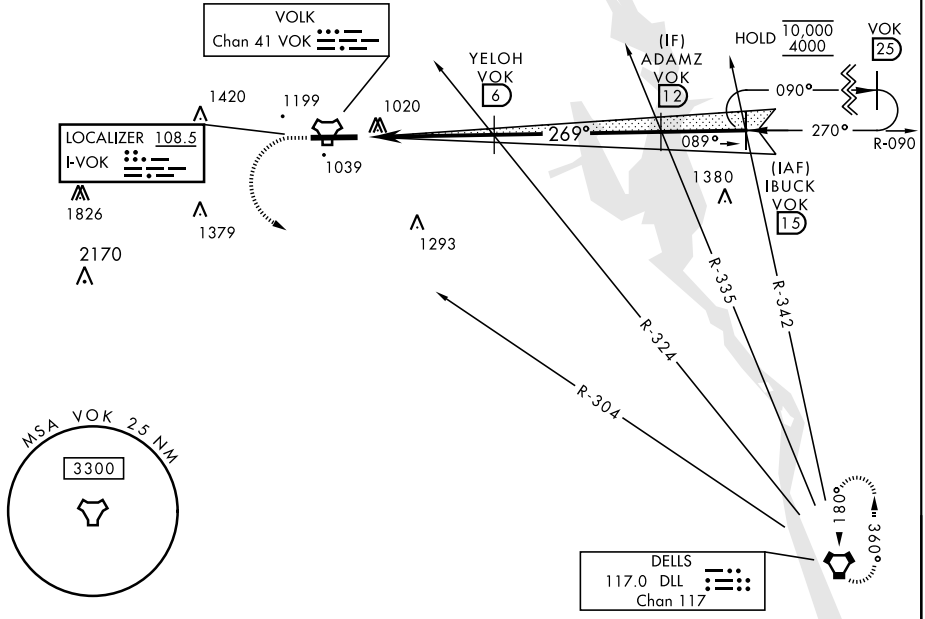
* When ALS inop, increase vis to ¾ mile.
 ** When ALS inop, increase CAT AB vis to 1 mile, CAT CDE vis to 1½ miles.

 ALSF-1

 MISSED APPROACH: Climb to 2200, then climbing left turn to 4000 via DLL VORTAC R-304 direct DLL and hold.

ATIS 134.35 257.85	APP CON 135.25 244.875	TOWER ★ 127.5 (CTAF) 239.25	GND CON 121.9 275.8
------------------------------	----------------------------------	--	-------------------------------

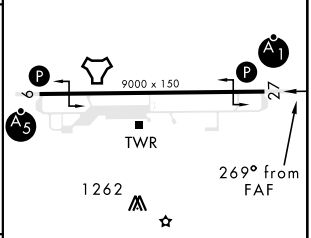
*** Circling NA South of Rwy 9-27.



EC-3, 31 OCT 2024 to 28 NOV 2024

EC-3, 31 OCT 2024 to 28 NOV 2024

EMERG SAFE ALT 100 NM 4200					ELEV 912	THRE 904
2200	4000	DLL R-304	YELOH VOK 6	ADAMZ VOK 12	IBUCK/VOK 15	R-090
TACAN	AKETT VOK 1.5	VOK 2.2	2500	2700	2900	269°
0.5			4.5 NM		GS 2.85°	TCH 53
CATEGORY	A	B	C	D	E	
S-ILS 27 *	1104/24		200	(200-½)		
S-LOC 27 **	1320/24	416 (500-½)	1320/40	416 (500-¾)		
CIRCLING ***	1400-1 488 (500-1)	1500-1 588 (600-1)	1500-1½ 588 (600-1½)	1500-2 588 (600-2)	1580-2¼ 668 (700-2¼)	
HIRL Rwy 9-27						FAF to MAP 4.5 NM
Knots						60 90 120 150 180
Min:Sec						4:30 3:00 2:15 1:48 1:30



CAMP DOUGLAS, WISCONSIN 43°56'N-90°15'W VOLK FLD (KVOK)

Amdt 4

ILS or LOC/DME RWY 27