

LOC/DME I-DEC <b>110.9</b> Chan <b>46</b>	APP CRS <b>060°</b>	Rwy Idg TDZE Apt Elev	<b>8496</b> <b>677</b> <b>682</b>
---	------------------------	-----------------------------	---

# ILS or LOC RWY 6

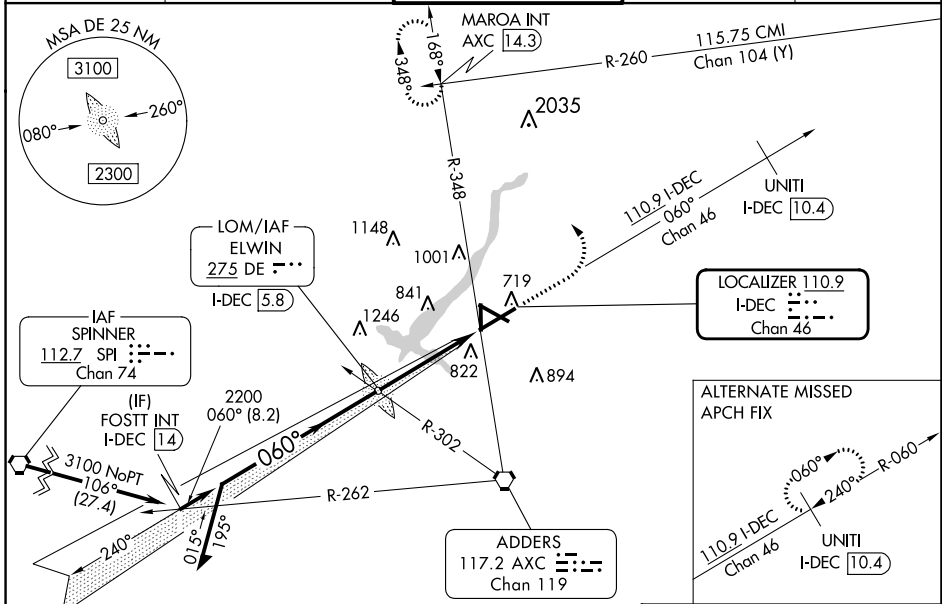
DECATUR (DEC)

**⚠** When local altimeter setting not received, use Lincoln altimeter setting and increase S-ILS 6 DA to 957 feet; increase all MDAs 80 feet and S-LOC 6 visibility Cat C/D to RVR 4000 and Circling visibility Cat C/D 1/4 SM. For inop ALS, increase S-LOC 6 Cat C/D visibility to 1 3/8 SM. For inop ALS when using Lincoln altimeter, increase S-ILS all Cats visibility to RVR 4500. VDP NA when using Lincoln altimeter setting. \*RVR 1800 authorized with use of FD or AP or HUD to DA (NA when using Lincoln altimeter setting).

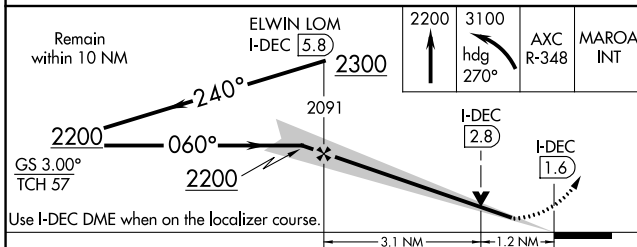
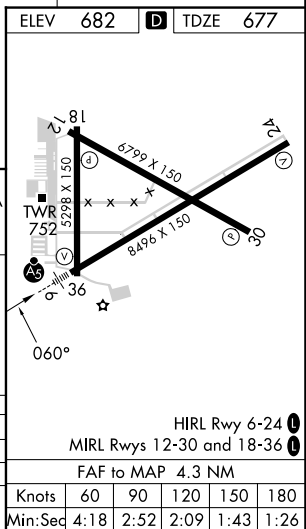


**MISSED APPROACH:** Climb to 2200 then climbing left turn to 3100 on heading 270° and AXC VORTAC R-348 to MAROA INT/ AXC 14.3 DME and hold.

ATIS <b>126.35</b>	CHAMPAIGN APP CON* <b>132.85 290.225</b>	DECATUR TOWER* <b>118.9 (CTAF) 291.775</b>	GND CON <b>121.75 291.775</b>	UNICOM <b>122.95</b>
-----------------------	---	---	----------------------------------	-------------------------



Procedure NA for arrival on SPI VORTAC airway radials 062 CW 153.



Remain within 10 NM	2200	3100	AXC R-348	MAROA INT
Use I-DEC DME when on the localizer course.	2200	2091	I-DEC 2.8	I-DEC 1.6

EC-3, 03 OCT 2024 to 31 OCT 2024

EC-3, 03 OCT 2024 to 31 OCT 2024