

WAAS CH <b>97619</b> <b>W22A</b>	APP CRS <b>224°</b>	Rwy Idg TDZE Apt Elev	<b>6502</b> <b>750</b> <b>755</b>
--	------------------------	-----------------------------	---

# RNAV (GPS) RWY 22

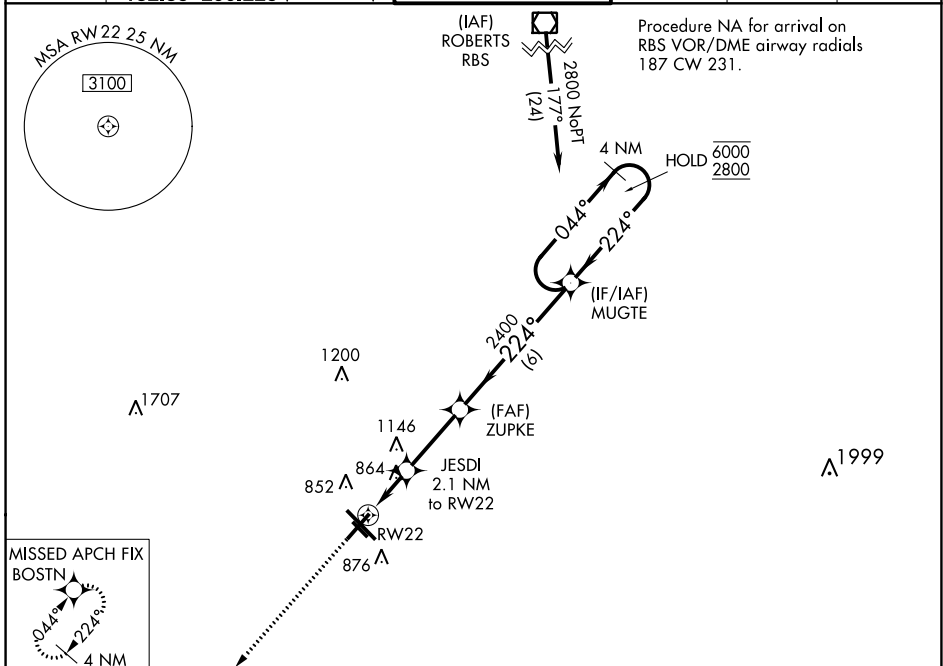
UNIVERSITY OF ILLINOIS/WILLARD (CMI)

RNP APCH - GPS.

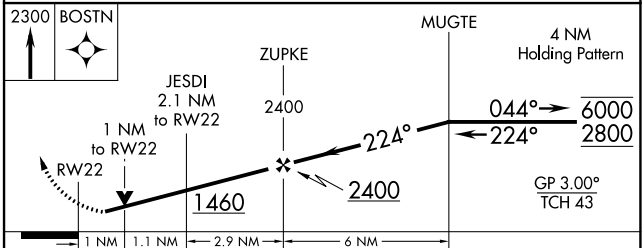
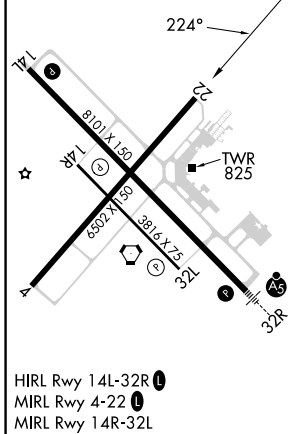
**ASR** Rwy 22 helicopter visibility reduction below 3/4 SM NA. For uncompensated Baro-VNAV systems, LNAV/VNAV NA below -21°C or above 54°C.

**MISSED APPROACH:**  
Climb to 2300 direct BOSTN and hold.

ATIS <b>124.85</b>	CHAMPAIGN APP CON * <b>121.35 285.65</b> (319°-138°) <b>132.85 290.225</b> (139°-318°)	CHAMPAIGN TOWER * <b>120.4 (CTAF) 0 229.4</b>	GND CON <b>121.8</b>	CLNC DEL <b>128.75</b>	UNICOM <b>122.95</b>
-----------------------	--	--	-------------------------	---------------------------	-------------------------



ELEV 755	<b>D</b>	TDZE 750
----------	----------	----------



CATEGORY	A	B	C	D
LPV DA		1000-3/4	250 (300-3/4)	
LNAV/VNAV DA		1219-1 3/8	469 (500-1 3/8)	
LNAV MDA		1120-1	370 (400-1)	
<b>C</b> CIRCLING	1240-1	485 (500-1)	1500-2 1/4 745 (800-2 1/4)	1500-2 1/2 745 (800-2 1/2)

EC-3, 31 OCT 2024 to 28 NOV 2024

EC-3, 31 OCT 2024 to 28 NOV 2024