

VOR/DME OWB <b>108.65</b> Chan <b>23 (Y)</b>	APP CRS <b>005°</b>	Rwy Idg TDZE Apt Elev	<b>8000</b> <b>401</b> <b>407</b>
--	------------------------	-----------------------------	---

# VOR RWY 36

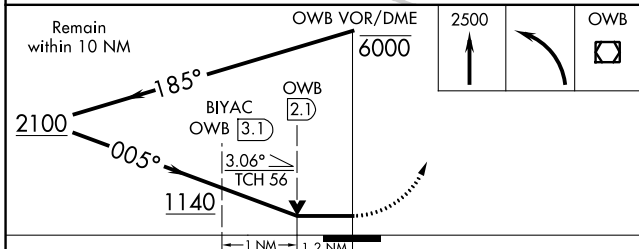
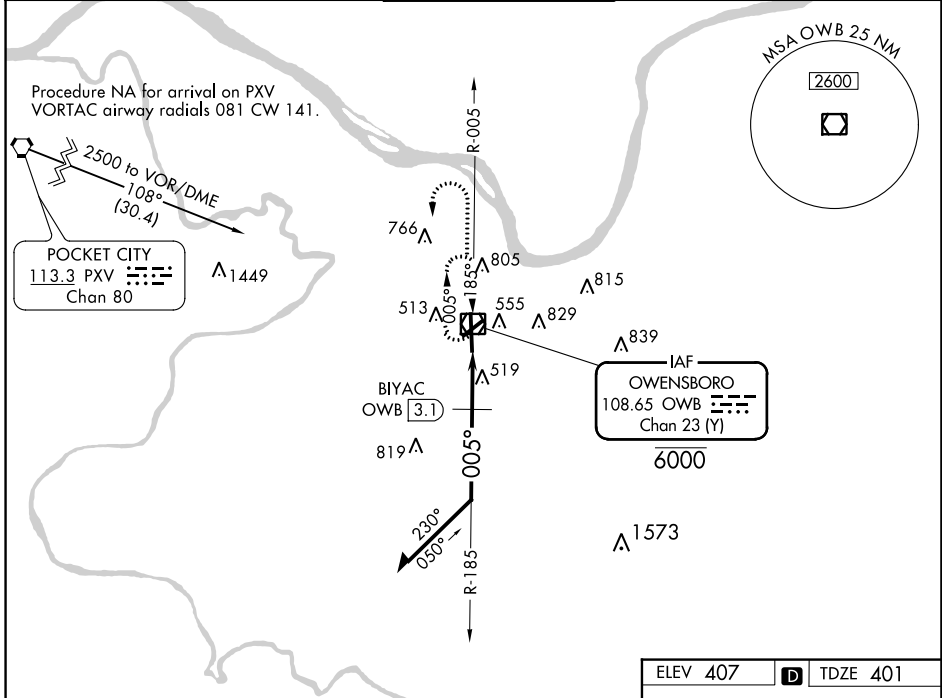
OWENSBORO/DAVIESS COUNTY RGNL (OWB)

**▲** For inop ALS, increase S-36 Cat C and D visibility to 2 SM and BIYAC fix minimums S-36 Cat C and D visibility to 1½ SM.

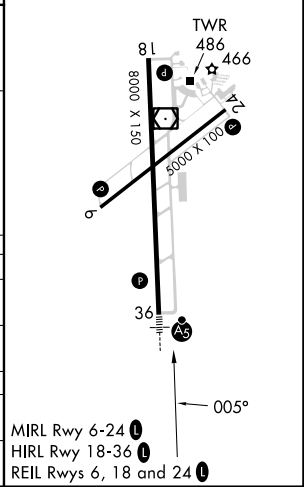
**MALSR**

**MISSED APPROACH:** Climb to 2500 then left turn direct OWB VOR/DME and hold.

AWOS-3PT <b>119.025</b>	EVANSVILLE APP CON ★ <b>124.025 290.9</b>	<b>OWENSBORO TOWER ★</b> <b>120.7 (CTAF) 251.15</b>	GND CON <b>121.7</b>	UNICOM <b>122.95</b>
----------------------------	--	--	-------------------------	-------------------------



ELEV 407	<b>D</b>	TDZE 401
----------	----------	----------



CATEGORY	A	B	C	D
S-36	1140-½	739 (800-½)	1140-1⅝	739 (800-1⅝)
<b>C</b> CIRCLING	1140-1	733 (800-1)	1140-2	1140-2¼
			733 (800-2)	733 (800-2¼)
BIYAC FIX MINIMUMS				
S-36	820-½	419 (500-½)	820-¾	419 (500-¾)
<b>C</b> CIRCLING	860-1	1120-1	1140-2	1140-2¼
	453 (500-1)	713 (800-1)	733 (800-2)	733 (800-2¼)

# VOR RWY 36

SE-1, 31 OCT 2024 to 28 NOV 2024

SE-1, 31 OCT 2024 to 28 NOV 2024