

# ILS Z or LOC Z RWY 18

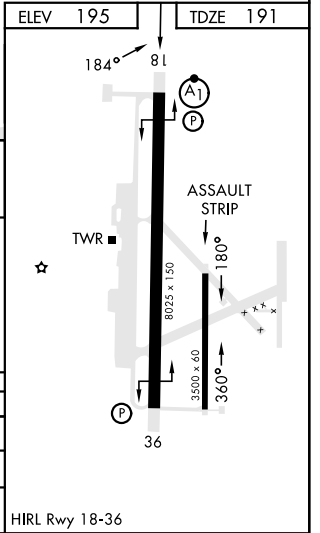
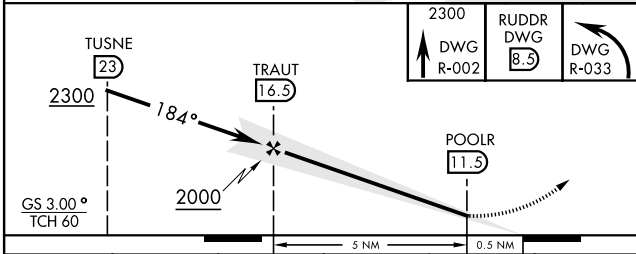
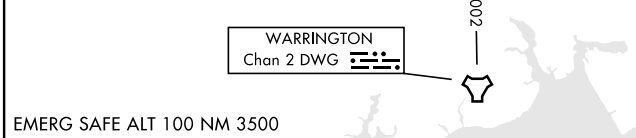
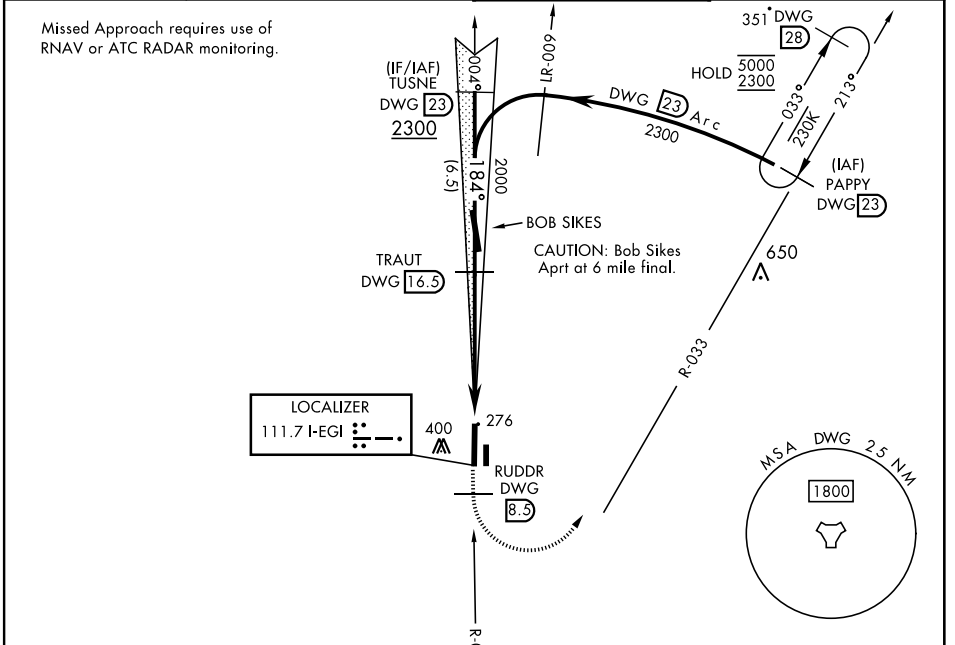
LOC I-EGI <b>111.7</b>	APCH CRS <b>184°</b>	Rwy Ldg TDZE <b>8025</b> Arprt Elev <b>191</b> <b>195</b>	AL-699 [USAF]	DUKE FLD (EGLIN AF AUX NR3) (KEGI)
---------------------------	-------------------------	---	---------------	------------------------------------

\* When ALS inop, increase RVR to 40, vis to ¼ mile.  
 \*\* When ALS inop, increase RVR to 55, vis to 1 mile.

ALSF-1 

MISSED APPROACH: Climb on DWG R-002 to 8.5 DME (RUDDR), then climbing left turn to 2300 intercept DWG R-033 to 23 DME (PAPPY) and hold.

ATIS * <b>244.575</b>	EGLIN APP CON <b>125.1 281.45</b> (271° - 089°) <b>132.1 360.6</b> (090° - 270°)	TOWER * <b>133.2 290.425</b>	GND CON <b>123.25 251.125</b>
--------------------------	--	---------------------------------	----------------------------------



CATEGORY	A	B	C	D	E
S-ILS 18 *	391/24		200	(200-½)	
S-LOC 18 **	540/24	349 (400-½)	540/30	349 (400-¾)	
CIRCLING	660-1	700-1	700-1½	760-2	780-2
	465 (500-1)	505 (600-1)	505 (600-1½)	565 (600-2)	585 (600-2)

HIRL Rwy 18-36

# ILS Z or LOC Z RWY 18

SE-3, 31 OCT 2024 to 28 NOV 2024

SE-3, 31 OCT 2024 to 28 NOV 2024