

# ILS or LOC Z RWY 18

LOC I-EGI <b>111.7</b>	APCH CRS <b>184°</b>	Rwy Idg TDZE Arprt Elev <b>8025</b> <b>195</b> <b>195</b>
---------------------------	-------------------------	--------------------------------------------------------------------------

[USAF]

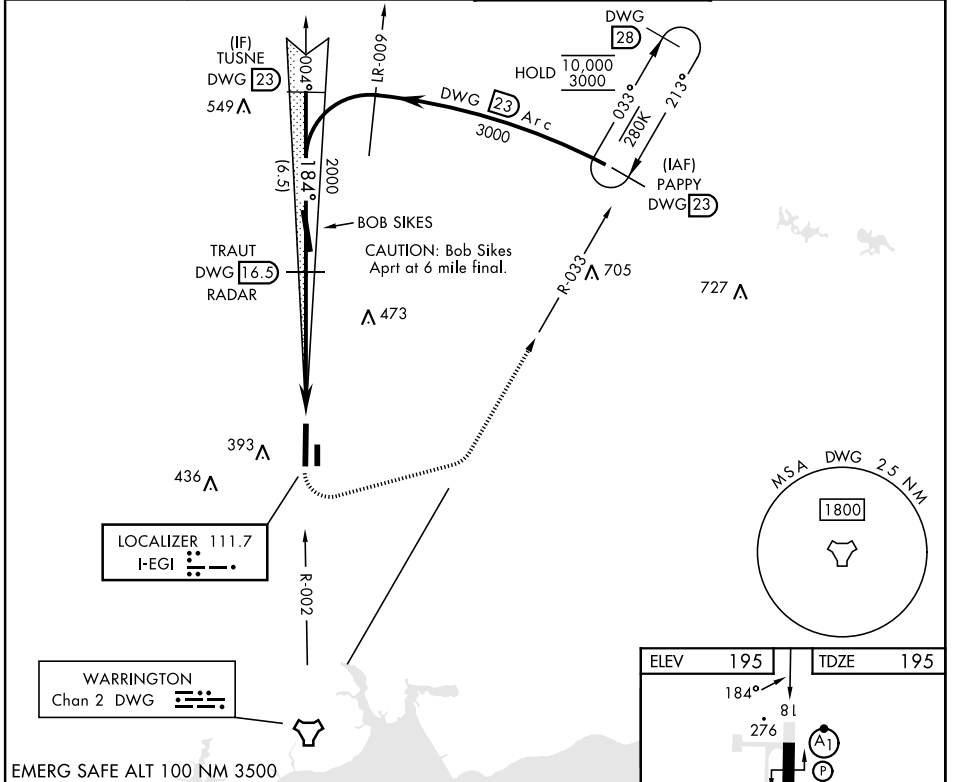
DUKE FLD (EGLIN AF AUX NR 3) (KEGI)

- \* When ALS inop, increase RVR to 40, vis to ¼ mile.
- \*\* When ALS inop, increase RVR to 55, vis to 1 mile.

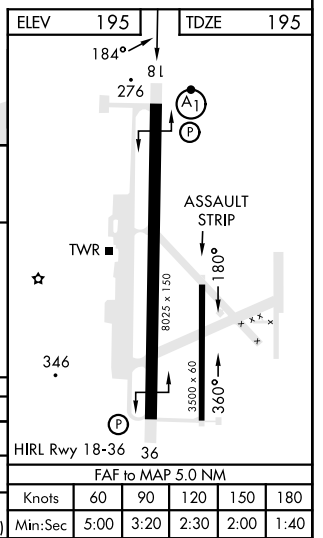
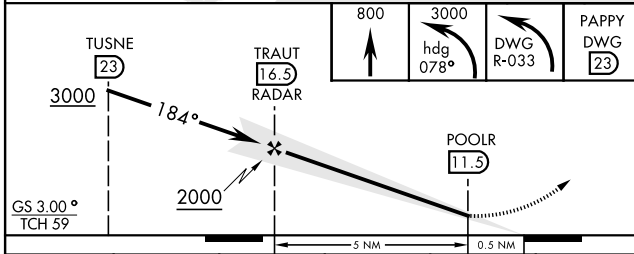


MISSED APPROACH: Climb to 800, then climbing left turn to 3000 on heading 078° and DWG TACAN R-033 to PAPPY/23 DME and hold.

ATIS ★ <b>244.575</b>	EGLIN APP CON <b>125.1 281.45</b> (271° - 089°) <b>132.1 360.6</b> (090° - 270°)	TOWER ★ <b>133.2 290.425</b>	GND CON <b>123.25 251.125</b>
--------------------------	----------------------------------------------------------------------------------------	---------------------------------	----------------------------------



EMERG SAFE ALT 100 NM 3500



CATEGORY	A	B	C	D	E
S-ILS 18 *	395/24		200	(200-½)	
S-LOC 18 **	540/24	345 (400-½)	540/30	345	(400-¾)
CIRCLING	680-1	740-1	740-1½	760-2	820-2¼
	485 (600-1)	545 (600-1)	545 (600-1½)	565 (600-2)	625 (700-2¼)
HIRL Rwy 18-36 36					
FAF to MAP 5.0 NM					
Knots	60	90	120	150	180
Min:Sec	5:00	3:20	2:30	2:00	1:40

# ILS or LOC Z RWY 18

SE-3, 26 DEC 2024 to 23 JAN 2025

SE-3, 26 DEC 2024 to 23 JAN 2025