

HI-ILS Y or LOC Y RWY 18

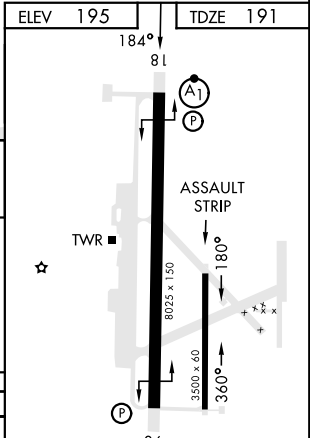
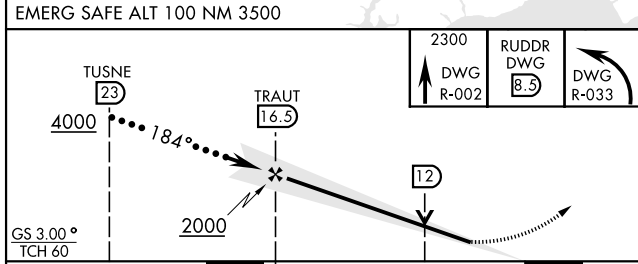
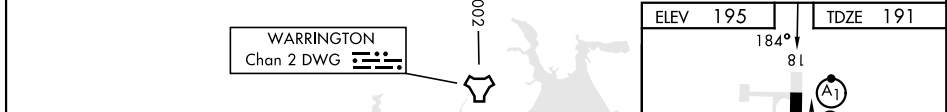
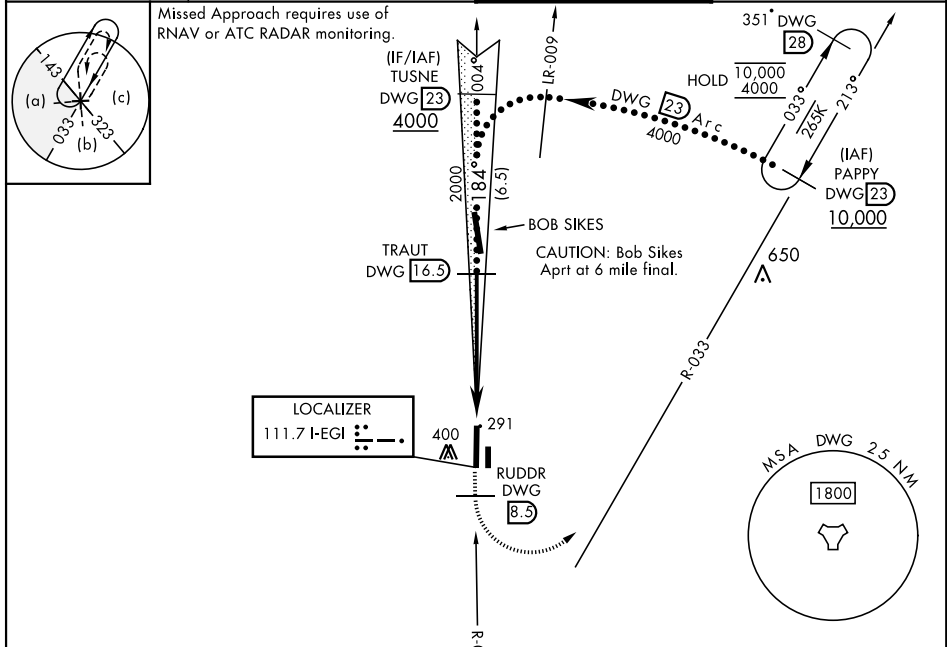
LOC I-EGI 111.7	APCH CRS 184°	Rwy Idg 8025 TDZE 191 Arprt Elev 195	AL-699 [USAF]	DUKE FLD (EGLIN AF AUX NR3) (KEGI)
---------------------------	-------------------------	---	---------------	------------------------------------

* When ALS inop, increase RVR to 40, vis to ¾ mile.
 ** When ALS inop, increase RVR to 55, vis to 1 mile.

ALSF-1

MISSED APPROACH: Climb on DWG R-002 to 8.5 DME (RUDDR), then climbing left turn to 2300 direct DWG R-033/23 DME (PAPPY) and hold.

ATIS ★ 244.575	EGLIN APP CON 125.1 281.45 (271°-089°) 132.1 360.6 (090°-270°)	TOWER ★ 133.2 290.425	GND CON 123.25 251.125
--------------------------	--	---------------------------------	----------------------------------



CATEGORY	C	D	E
S-ILS 18 *	391/24	200 (200-½)	
S-LOC 18 **	540/24	349 (400-¾)	
CIRCLING	700-1½ 505 (600-1½)	760-2 565 (600-2)	780-2 585 (600-2)

HIRL Rwy 18-36	FAF to MAP 5.5 NM				
Knots	120	140	160	180	200
Min:Sec	2:45	2:21	2:04	1:50	1:39

HI-ILS Y or LOC Y RWY 18

SE-3, 31 OCT 2024 to 28 NOV 2024

SE-3, 31 OCT 2024 to 28 NOV 2024