

WAAS CH 42601 W06A	APP CRS 056°	Rwy Idg TDZE Apt Elev	5504 58 67
--	------------------------	-----------------------------	---------------------------------------

RNAV (GPS) RWY 6

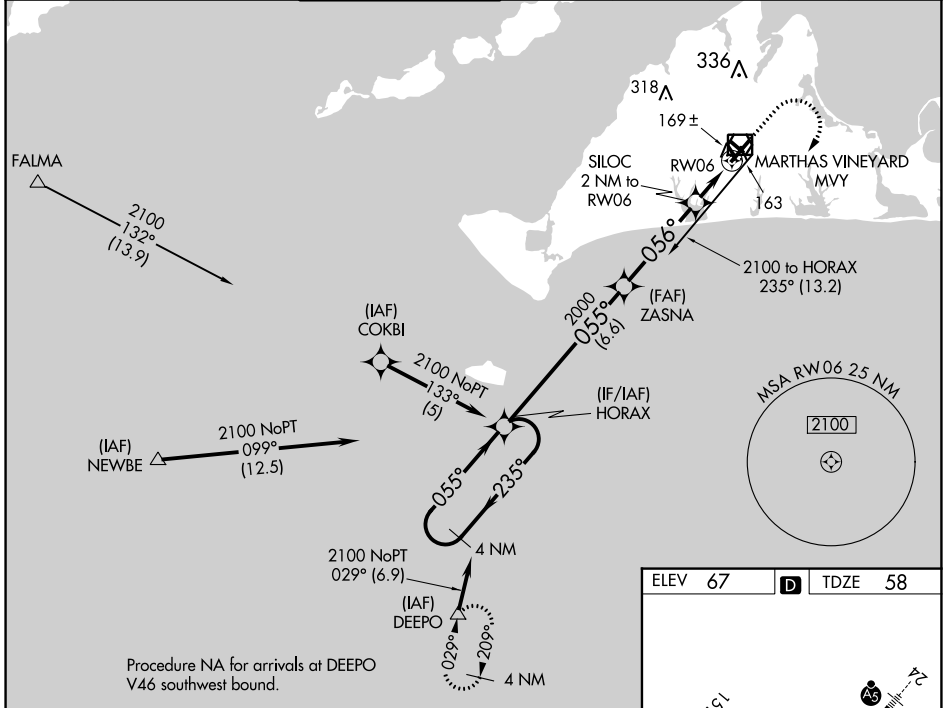
MARTHA'S VINEYARD (MVY)

RNP APCH.

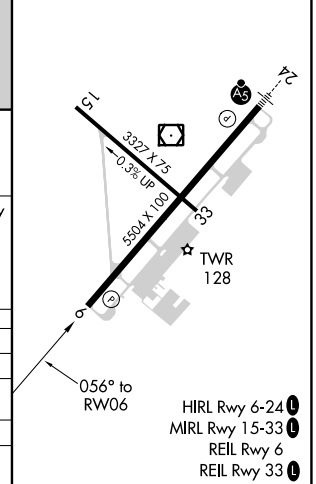
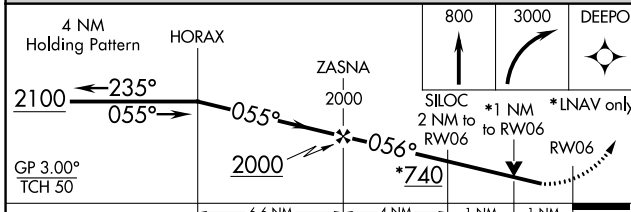
▼ Rwy 6 helicopter visibility reduction below ¼ SM NA. VDP and Baro-VNAV NA when using Hyannis altimeter setting. For uncompensated Baro-VNAV systems, LNAV/VNAV NA below -15°C or above 43°C. When local altimeter setting not received, use Hyannis altimeter setting and increase LPV DA to 362 feet and all Cats visibility by ¼ SM, increase LNAV/VNAV DA to 408 feet and all Cats visibility ½ SM; increase all MDAs 60 feet and Cats C and D visibility ¼ SM. Circling Rwy 15 NA at night.

MISSED APPROACH:
Climb to 800 then climbing right turn to 3000 direct DEEPO and hold.

ATIS 126.25	BOSTON APP CON * 133.75	VINEYARD TOWER * 121.4 (CTAF) 0	GND CON 124.35	CLNC DEL 124.35	CLNC DEL 119.7 (When twr closed)	UNICOM 122.95
-----------------------	-----------------------------------	---	--------------------------	---------------------------	---	-------------------------



ELEV 67	D	TDZE 58
---------	----------	---------



CATEGORY	A	B	C	D
LPV DA		308-¾	250 (300-¾)	
LNAV/VNAV DA		354-1	296 (300-1)	
LNAV MDA		420-1	362 (400-1)	
C CIRCLING	500-1 433 (500-1)	540-1 473 (500-1)	700-1¾ 633 (700-1¾)	780-2¼ 713 (800-2¼)

NE-1, 26 JAN 2023 to 23 FEB 2023

NE-1, 26 JAN 2023 to 23 FEB 2023