

WAAS CH 93829 W15A	APP CRS 146°	Rwy Idg TDZE Apt Elev	3327 67 67
--	------------------------	-----------------------------	---------------------------------------

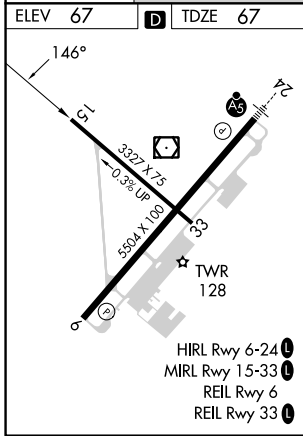
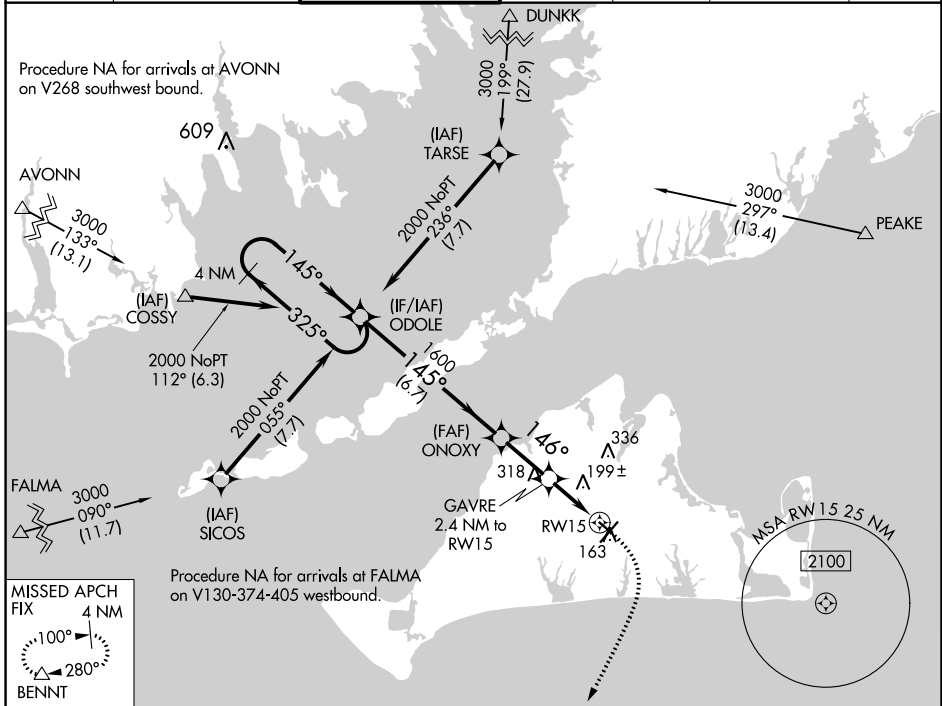
RNAV (GPS) RWY 15

MARTHA'S VINEYARD (MVY)

⚠ Baro-VNAV NA when using Hyannis altimeter setting. For uncompensated Baro-VNAV systems, LNAV/VNAV NA below -15°C (5°F) or above 54°C (130°F). When local altimeter setting not received, use Hyannis altimeter setting and increase all DA 54 feet and all MDA 60 feet; increase LNAV Cat C and D visibility and Circling Cat C and D visibility ¼ mile. DME/DME RNP-0.3 NA. Helicopter visibility reduction below 1 SM NA. Night landing: Rwy 15 NA.

MISSED APPROACH:
Climb to 600 then climbing right turn to 2000 direct BENNT and hold.

ATIS 126.25	BOSTON APP CON 133.75	VINEYARD TOWER * 121.4 (CTAF) 0	GND CON 124.35	CLNC DEL 124.35	CLNC DEL 119.7 (When twr closed)	UNICOM 122.95
-----------------------	---------------------------------	--	--------------------------	---------------------------	---	-------------------------



ELEV 67	D	TDZE 67	4 NM Holding Pattern				600	2000	BENNT
			ODOLE	ONOXY	GAVRE 2.4 NM to RWY 15	RWY 15	↑	↪	△
GP 3.00° TCH 53			2000	1600	880*	*LNAV only			
			← 325°	→ 145°	↘ 145°	↘ 146°	↻		
			6.7 NM		2.3 NM	2.4 NM			
CATEGORY	A	B	C	D					
LPV DA		317-1	250 (300-1)						
LNAV/VNAV DA		317-1	250 (300-1)						
LNAV MDA	460-1	393 (400-1)	460-1½	393 (400-1½)					
CIRCLING	500-1 433 (500-1)	540-1 473 (500-1)	700-1¾ 633 (700-1¾)	780-2¼ 713 (800-2¼)					