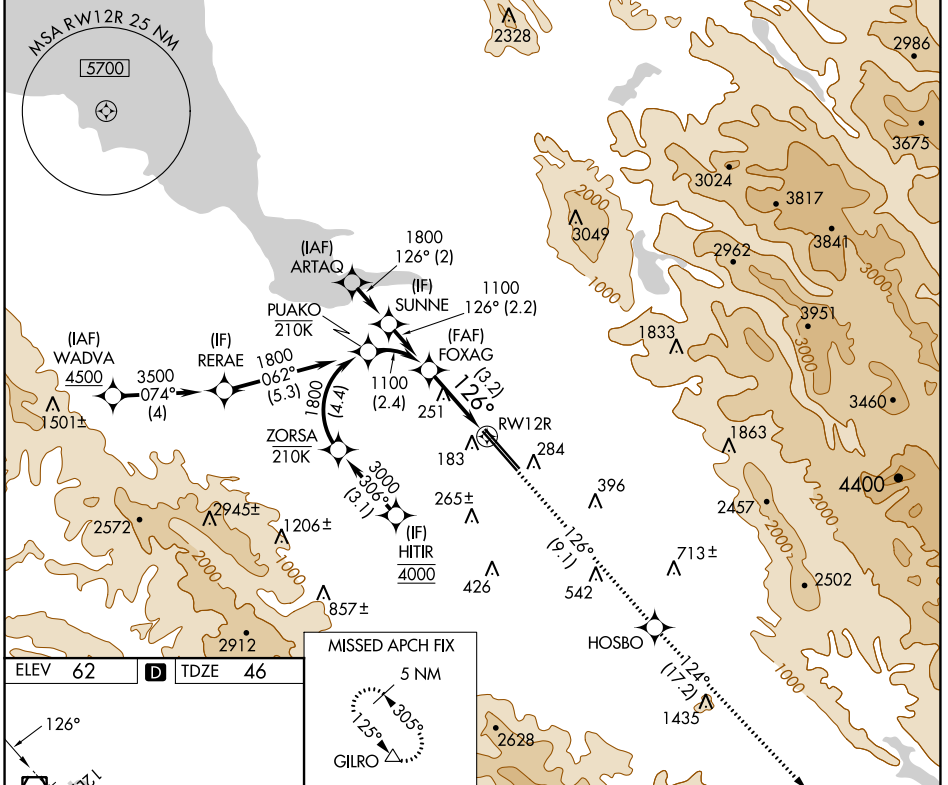


APP CRS	Rwy ldg	8587
126°	TDZE	46
	Apt Elev	62

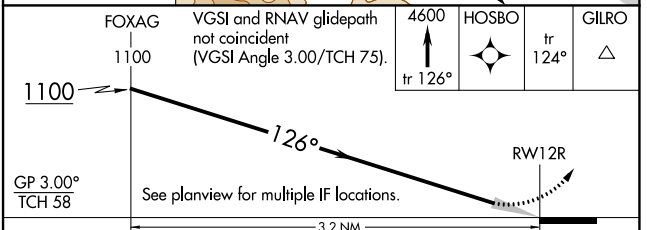
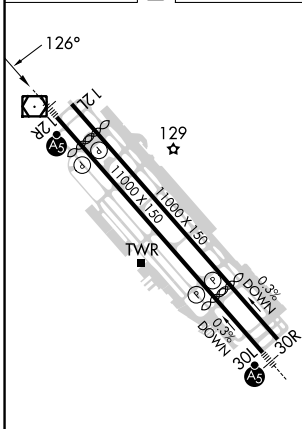
RNAV (RNP) Z RWY 12R

NORMAN Y MINETA SAN JOSE INTL (SJC)

RNP AR APCH-GPS.				MALSR	MISSED APPROACH: Climb to 4600 on track 126° to HOSBO and track 124° to GILRO and hold.		
<p>▼ For uncompensated Baro-VNAV systems, procedure NA below 0°C or above 54°C. For inop ALS, increase RNP 0.15 all Cats visibility to RVR 5500.</p>							
D-ATIS	NORCAL APP CON	SAN JOSE TOWER*	GND CON	CLNC DEL	CPDLC	UNICOM	
126.95	120.1 290.25	124.0 (CTAF) 257.6	121.7	118.0		122.95	



ELEV	62	D	TDZE	46
------	-----------	----------	------	-----------



GP 3.00° TCH 58	See planview for multiple IF locations.			
CATEGORY	A	B	C	D
RNP 0.15 DA		394/30	348 (400-¾)	
RNP 0.30 DA		486/40	440 (500-¾)	

REIL Rwy 12L
HIRL Rwys 12L-30R and 12R-30L

AUTHORIZATION REQUIRED

SW-2, 31 OCT 2024 to 28 NOV 2024

SW-2, 31 OCT 2024 to 28 NOV 2024