

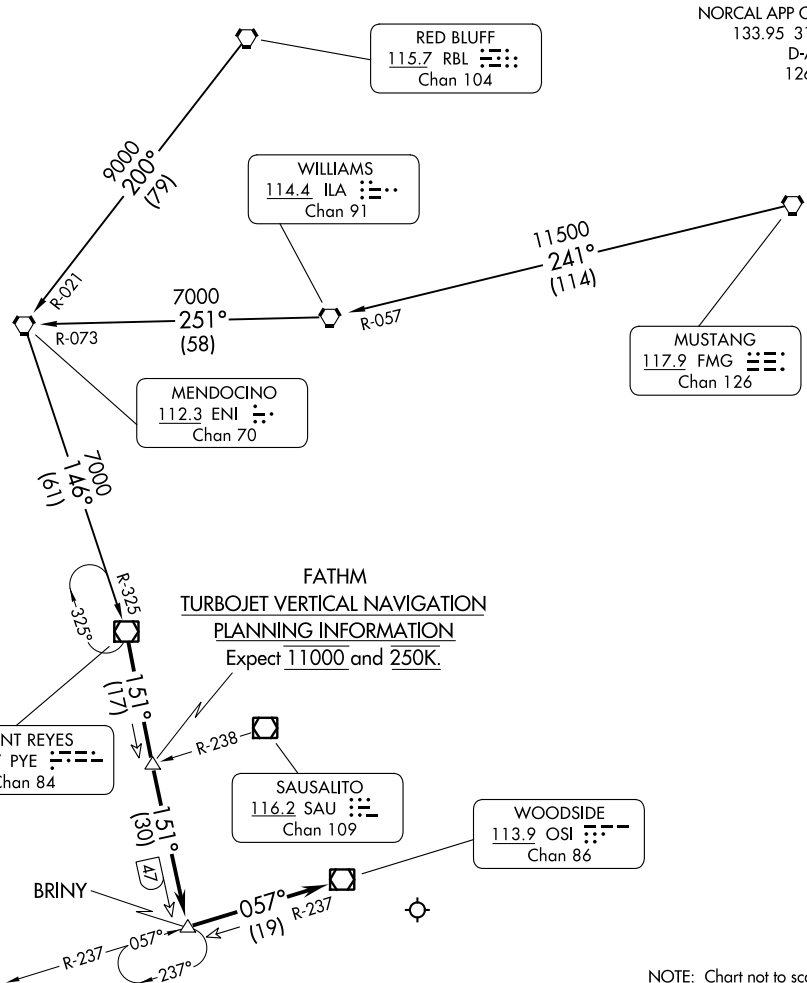
BRINY TWO ARRIVAL

AL-693 (FAA)

NORMAN Y MINETA SAN JOSE INTL (SJC)

SAN JOSE, CALIFORNIA

NORCAL APP CON
133.95 317.6
D-ATIS
126.95



NOTE: Chart not to scale.

ARRIVAL ROUTE DESCRIPTION

MENDOCINO TRANSITION (ENI.BRINY2): From over ENI VORTAC via ENI R-146 and PYE R-325 to PYE VOR/DME. Thence

MUSTANG TRANSITION (FMG.BRINY2): From over FMG VORTAC via FMG R-241 to ILA VORTAC then via ILA R-251 to ENI VORTAC, then via ENI R-146 to PYE VOR/DME. Thence

RED BLUFF TRANSITION (RBL.BRINY2): From over RBL VORTAC via RBL R-200 and ENI R-146 to PYE VOR/DME. Thence

. . . . From over PYE VOR/DME via PYE R-151 to BRINY INT/DME, then via OSI R-237 to OSI VOR/DME. Expect RADAR vectors to Rwy 12R final approach course.

BRINY TWO ARRIVAL

SW-2, 31 OCT 2024 to 28 NOV 2024

SW-2, 31 OCT 2024 to 28 NOV 2024