

VOR/DME R1W <b>114.05</b> Chan <b>87(Y)</b>	APP CRS <b>101°</b>	Rwy Idg <b>8204</b> TDZE <b>5516</b> Apt Elev <b>5516</b>
---	------------------------	---

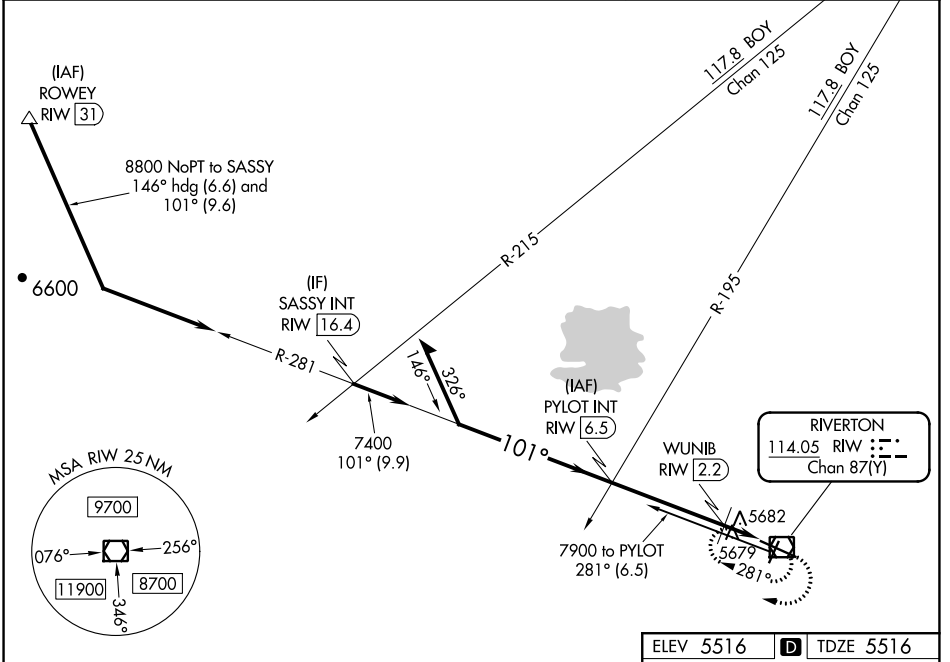
# VOR RWY 10

CENTRAL WYOMING RGNL (R1W)

**⚠** When local altimeter setting not received, use Lander altimeter setting and increase all MDA 60 feet and increase S-10 Cat C and D visibility ¼ mile and Circling Cat C visibility ½ mile, increase WUNIB fix minimums Cat C and D visibility ½ mile. Rwy 10 helicopter visibility reduction below ¾ SM NA.

MISSED APPROACH: Climb to 7900 in R1W VOR/DME holding pattern.

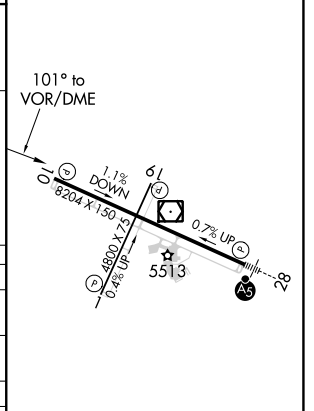
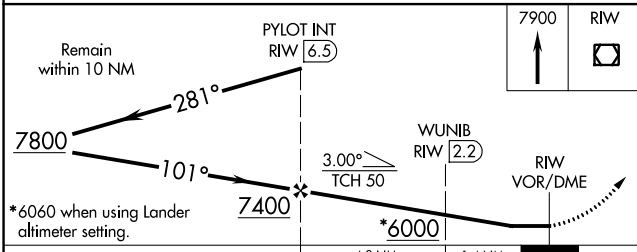
ASOS <b>121.425</b>	SALT LAKE CENTER <b>133.25 285.6</b>	UNICOM <b>122.8 (CTAF) 0</b>
------------------------	---	---------------------------------



NW-1, 31 OCT 2024 to 28 NOV 2024

NW-1, 31 OCT 2024 to 28 NOV 2024

ELEV 5516	<b>D</b> TDZE 5516
-----------	--------------------



CATEGORY	A	B	C	D
S-10	6000-1 484 (500-1)		6000-1 ¾ 484 (500-1 ¾)	
<b>C</b> CIRCLING	6000-1 484 (500-1)		6000-1 ½ 484 (500-1 ½)	6120-2 604 (600-2)
WUNIB FIX MINIMUMS (DME REQUIRED)				
S-10	5940-1 424 (500-1)		5940-1 ¼ 424 (500-1 ¼)	
<b>C</b> CIRCLING	6000-1 484 (500-1)		6000-1 ½ 484 (500-1 ½)	6120-2 604 (700-2)

REIL Rwy 1, 10, and 19 **0**  
MIRL Rwy 1-19 **0**  
HIRL Rwy 10-28 **0**