


| | | |
|--|------------------------|-------------------------|
| WAAS CH 61115 W28A | APP CRS 284° | Rwy Idg 8204 |
| | | TDZE 5459 |
| | | Apt Elev 5516 |

RNAV (GPS) RWY 28

CENTRAL WYOMING RGNL (RIW)

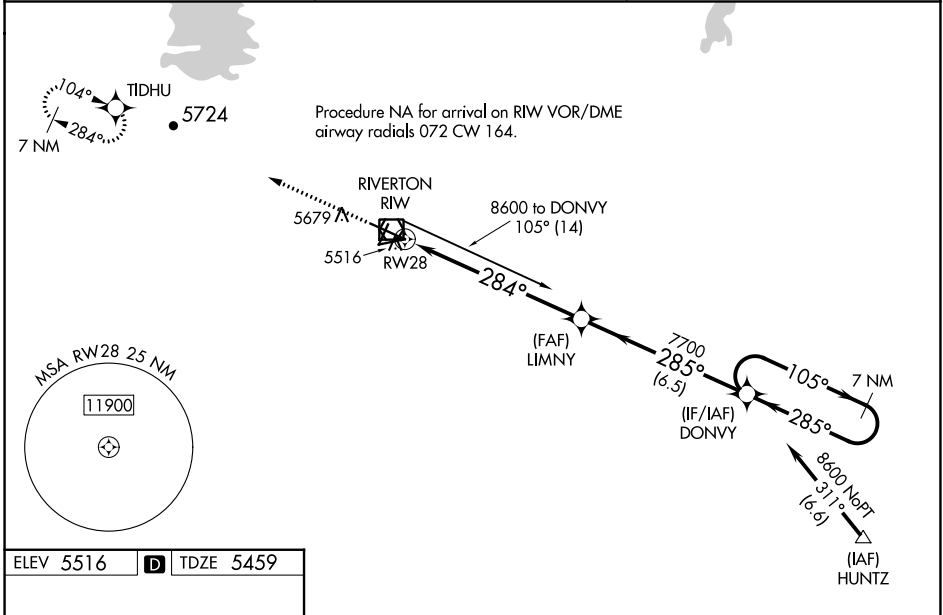
RNP APCH - GPS.

⚠ Baro-VNAV and VDP NA when using Lander altimeter setting. For uncompensated Baro-VNAV systems, LNAV/VNAV NA below -27°C or above 48°C. For inop MALSR, increase LNAV/VNAV all Cats visibility to ½ mile and LNAV Cat C and D visibility to 1 mile. When local altimeter setting not received, use Lander altimeter setting: increase LPV DA to 5713 feet, LNAV/VNAV DA to 5763 and all visibilities ½ mile; increase all MDA 60 feet and LNAV Cat C and D visibility ½ mile. For inop MALSR, when using Lander altimeter setting, increase LPV all Cats visibility to ½ mile and LNAV/VNAV all Cats visibility to 1 mile.

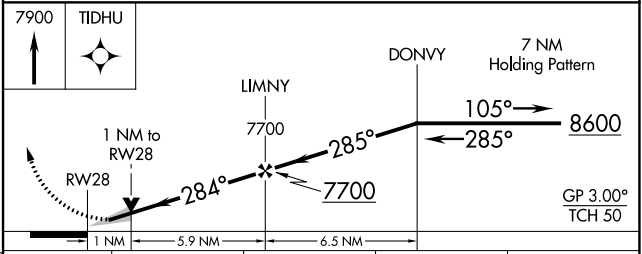
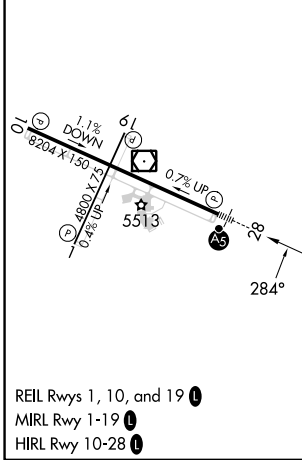
MALSR 

MISSED APPROACH: Climb to 7900 direct TIDHU and hold.

| | | |
|------------------------|---|---|
| ASOS 121.425 | SALT LAKE CENTER 133.25 285.6 | UNICOM 122.8 (CTAF)  |
|------------------------|---|---|



| | | |
|-----------|----------|-----------|
| ELEV 5516 | D | TDZE 5459 |
|-----------|----------|-----------|



| CATEGORY | A | B | C | D |
|-------------------|--------|-------------|--------------|-------------|
| LPV DA | | 5659-½ | 200 (200-½) | |
| LNAV/VNAV DA | | 5709-½ | 250 (200-½) | |
| LNAV MDA | 5820-½ | 361 (400-½) | 5820-⅝ | 361 (400-⅝) |
| C CIRCLING | 6000-1 | 484 (500-1) | 6000-1½ | 6120-2 |
| | | | 484 (500-1½) | 604 (700-2) |

NW-1, 31 OCT 2024 to 28 NOV 2024

NW-1, 31 OCT 2024 to 28 NOV 2024