

LOC I-RIW 110.5	APP CRS 284°	Rwy ldg TDZE Apt Elev	8204 5459 5516
---------------------------	------------------------	-----------------------------	---

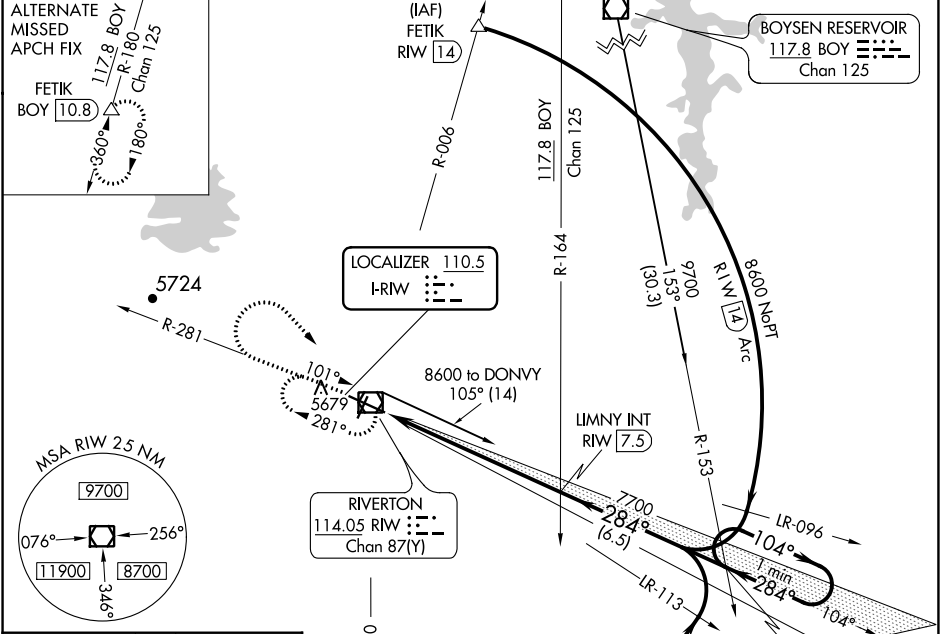
ILS or LOC RWY 28

CENTRAL WYOMING RGNL (RIW)

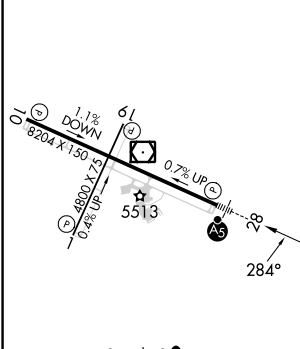
NA When local altimeter setting not received, use Lander altimeter setting: increase DA to 5713 feet; increase all MDA 60 feet and S-LOC 28 Cat C and D visibility 1/4 mile. For inop MALSRL, when using Lander altimeter setting, increase S-ILS 28 all Cats visibility to 7/8 mile and S-LOC 28 Cat C and D visibility to 1 1/8 mile. VDP NA when using Lander altimeter setting.

MALSRL MISSED APPROACH: Climb to 6800 then climbing right turn to 7700 direct RIW VOR/DME and hold, continue climb-in-hold to 7700.

ASOS 121.425	SALT LAKE CENTER 133.25 285.6	UNICOM 122.8 (CTAF)
------------------------	---	-------------------------------



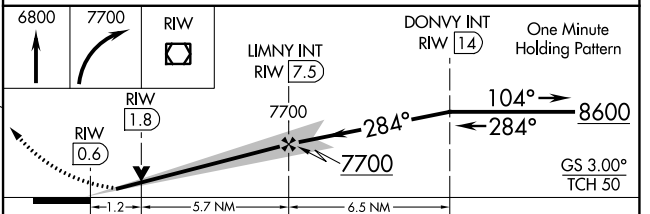
ELEV 5516	D	TDZE 5459
-----------	----------	-----------



REIL Rwy 1, 10 and 19
MIRL Rwy 1-19
HIRL Rwy 10-28

FAF to MAP 6.9 NM

Knots	60	90	120	150	180
Min:Sec	6:54	4:36	3:27	2:46	2:18



CATEGORY	A	B	C	D
S-ILS 28		5659-1/2	200 (200-1/2)	
S-LOC 28	5880-1/2	421 (400-1/2)	5880-3/4	421 (400-3/4)
C CIRCLING	6000-1	484 (500-1)	6000-1 1/2	6120-2
			484 (500-1 1/2)	604 (700-2)

NW-1, 31 OCT 2024 to 28 NOV 2024

NW-1, 31 OCT 2024 to 28 NOV 2024