

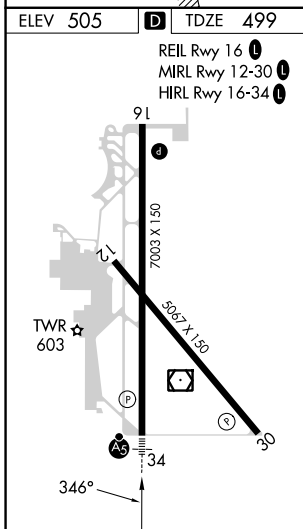
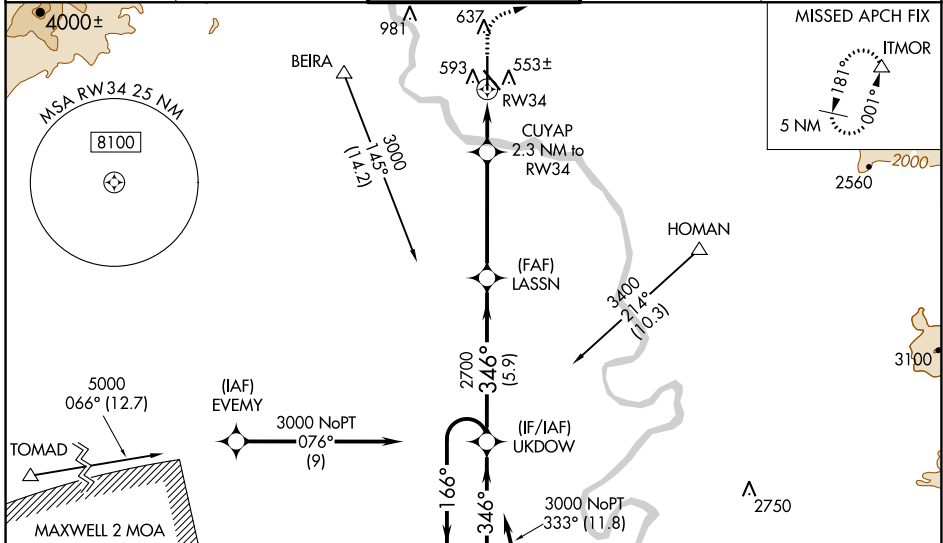
WAAS CH 56402 W34A	APP CRS 346°	Rwy Idg TDZE Apt Elev	7003 499 505
--	------------------------	-----------------------------	---

RNAV (GPS) RWY 34

REDDING RGNL (RDD)

RNP APCH.	MALS R	MISSED APPROACH: Climb to 1700 then climbing right turn to 5000 direct ITMOR, continue climb-in-hold to 5000.
<p>⚠ For uncompensated Baro-VNAV systems, LNAV/VNAV NA below -4°C or above 54°C. For inop ALS, increase LNAV/VNAV all Cats visibility to 3/4 SM and LNAV Cat C, D visibility to 1 SM.</p>		

ATIS 124.1	OAKLAND CENTER 132.2 350.3	REDDING TOWER * 119.8(CTAF) 0 269.25	GND CON 121.7	UNICOM 122.95
----------------------	--------------------------------------	---	-------------------------	-------------------------



ELEV 505	D	TDZE 499																									
REIL Rwy 16	MIRL Rwy 12-30	HIRL Rwy 16-34																									
<p>4 NM Holding Pattern</p> <p>VGSI and RNAV glidepath not coincident (VGSI Angle 3.00/TCH 55).</p> <p>UKDOW</p> <p>LASSN 2700</p> <p>CUYAP 2.3 NM to RW34</p> <p>*1260</p> <p>*1 NM to RW34</p> <p>*LNAV only.</p>																											
GP 3.00°	TCH 52																										
6000	3000	2700																									
<p>4 NM Holding Pattern</p> <p>1700 5000 ITMOR</p>																											
<table border="1"> <tr> <th>CATEGORY</th> <th>A</th> <th>B</th> <th>C</th> <th>D</th> </tr> <tr> <td>LPV DA</td> <td></td> <td>699-1/2</td> <td>200 (200-1/2)</td> <td></td> </tr> <tr> <td>LNAV/VNAV DA</td> <td></td> <td>754-1/2</td> <td>255 (300-1/2)</td> <td></td> </tr> <tr> <td>LNAV MDA</td> <td>860-1/2</td> <td>361 (400-1/2)</td> <td>860-5/8</td> <td>361 (400-5/8)</td> </tr> <tr> <td>C CIRCLING</td> <td>940-1 435 (500-1)</td> <td>1000-1 495 (500-1)</td> <td>1120-1 3/4 615 (700-1 3/4)</td> <td>1340-2 3/4 835 (900-2 3/4)</td> </tr> </table>	CATEGORY	A	B	C	D	LPV DA		699-1/2	200 (200-1/2)		LNAV/VNAV DA		754-1/2	255 (300-1/2)		LNAV MDA	860-1/2	361 (400-1/2)	860-5/8	361 (400-5/8)	C CIRCLING	940-1 435 (500-1)	1000-1 495 (500-1)	1120-1 3/4 615 (700-1 3/4)	1340-2 3/4 835 (900-2 3/4)		
CATEGORY	A	B	C	D																							
LPV DA		699-1/2	200 (200-1/2)																								
LNAV/VNAV DA		754-1/2	255 (300-1/2)																								
LNAV MDA	860-1/2	361 (400-1/2)	860-5/8	361 (400-5/8)																							
C CIRCLING	940-1 435 (500-1)	1000-1 495 (500-1)	1120-1 3/4 615 (700-1 3/4)	1340-2 3/4 835 (900-2 3/4)																							

SW-2, 03 OCT 2024 to 31 OCT 2024

SW-2, 03 OCT 2024 to 31 OCT 2024