

| | | |
|---------------------------|------------------------|-------------------------|
| LOC I-JMS 109.3 | APP CRS 131° | Rwy Idg 6502 |
| | | TDZE 1500 |
| | | Apt Elev 1500 |

LOC BC RWY 13

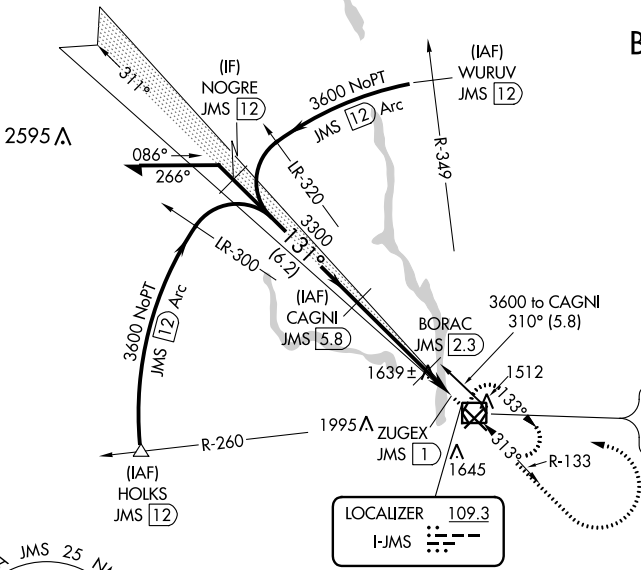
JAMESTOWN RGNL (JMS)

▼ Rwy 13 helicopter visibility reduction below 3/4 SM NA.
▲ NA DME required. DME from JMS VOR/DME. Simultaneous reception of I-JMS and JMS VOR/DME required.

MISSED APPROACH: Climb to 3600 then left turn direct JMS VOR/DME and hold.

| | | |
|------------------------|--|---------------------------------|
| ASOS 118.425 | MINNEAPOLIS CENTER 124.2 270.3 | UNICOM 123.0 (CTAF) 0 |
|------------------------|--|---------------------------------|

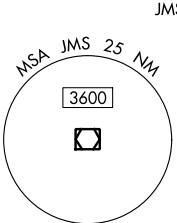
**DME REQUIRED
BACK COURSE**



Procedure NA for arrival on JMS VOR/DME airway radials 260 CW 333.

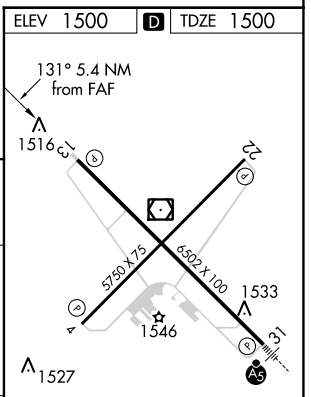
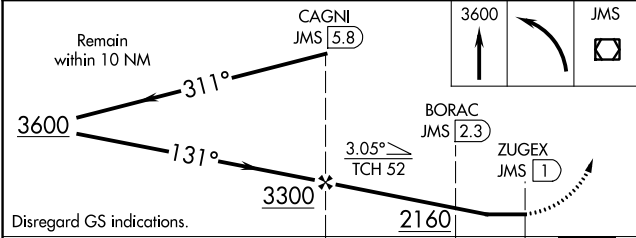
JAMESTOWN
 114.5 JMS
 Chan 92

LOCALIZER 109.3
 I-JMS



NC-1, 31 OCT 2024 to 28 NOV 2024

NC-1, 31 OCT 2024 to 28 NOV 2024



| CATEGORY | A | B | C | D |
|-------------------|--------|-------------|-----------------|-----------------|
| S-13 | 1900-1 | 400 (400-1) | 1900-1 1/8 | 400 (400-1 1/8) |
| C CIRCLING | 1960-1 | 460 (500-1) | 2000-1 1/2 | 2300-2 1/2 |
| | | | 500 (500-1 1/2) | 800 (800-2 1/2) |

MIRL Rwy 4-22
 HIRL Rwy 13-31
 REIL Rws 4, 13, and 22