

LOC I-JMS <b>109.3</b>	APP CRS <b>311°</b>	Rwy Idg <b>6502</b>
		TDZE <b>1498</b>
		Apt Elev <b>1500</b>

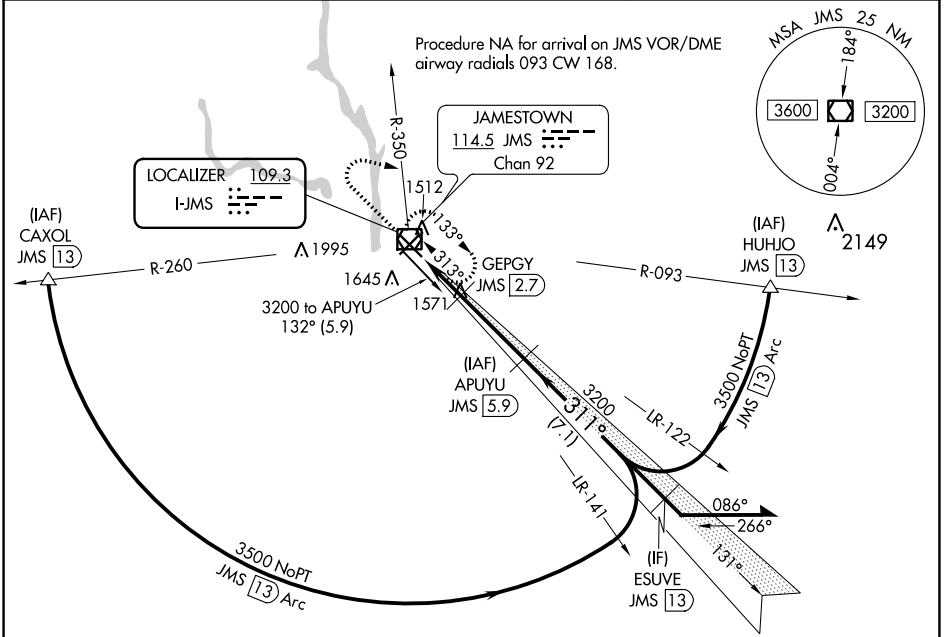
# ILS or LOC RWY 31

JAMESTOWN RGNL (JMS)

**▼** Autopilot coupled approach NA below 1900. DME required.  
**▲ NA** DME from JMS VOR/DME. Simultaneous reception of I-JMS and JMS VOR/DME required.

**MALSR** MISSED APPROACH: Climb to 3200 then right turn heading 100° and on JMS VOR/DME R-350 to JMS VOR/DME and hold.

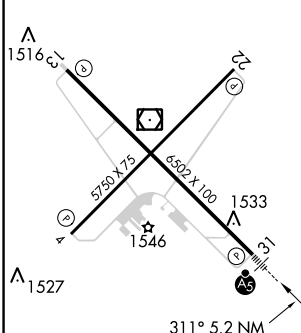
ASOS <b>118.425</b>	MINNEAPOLIS CENTER <b>124.2 270.3</b>	UNICOM <b>123.0 (CTAF) 0</b>
------------------------	--	---------------------------------



NC-1, 31 OCT 2024 to 28 NOV 2024

NC-1, 31 OCT 2024 to 28 NOV 2024

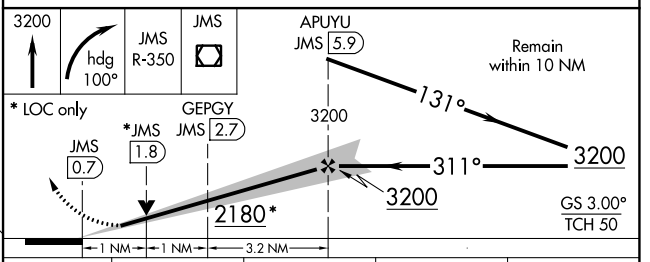
ELEV 1500	<b>D</b>	TDZE 1498
-----------	----------	-----------



FAF to MAP 5.2 NM					
Knots	60	90	120	150	180
Min:Sec	5:12	3:28	2:36	2:05	1:44

JAMESTOWN, NORTH DAKOTA  
Amdt 8 07DEC17

## DME REQUIRED



CATEGORY	A	B	C	D
S-ILS 31	1698-½ 200 (200-½)			
S-LOC 31	1880-½	382 (400-½)	1880-⅝	382 (400-⅝)
<b>C</b> CIRCLING	1960-1	460 (500-1)	2000-1½	2300-2½
			500 (500-½)	800 (800-2½)

# JAMESTOWN RGNL (JMS) ILS or LOC RWY 31