


WAAS Ch 40012 W16A	APP CRS 165°	Rwy Idg TDZE Apt Elev	10518 100 100
--	------------------------	-----------------------------	--

RNAV (GPS) RWY 16

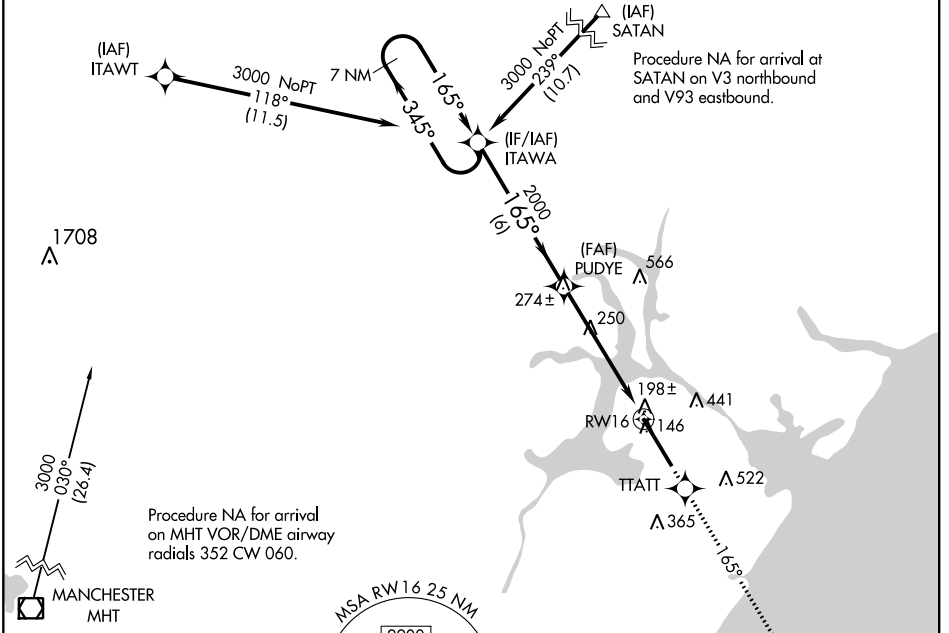
PORTSMOUTH INTL AT PEASE (PSM)

⚠ Circling NA East of Rwy 16-34. For uncompensated Baro-VNAV systems, LNAV/VNAV NA below -15°C (5°F) or above 49°C (120°F). DME/DME RNP-0.3 NA. For inoperative MALSR, increase LPV Cat E visibility to RVR 4000, LNAV/VNAV Cat E visibility to RVR 6000, LNAV Cat D visibility to RVR 6000, and LNAV Cat E visibility to 1½ miles. **RVR 1800 authorized with use of FD or AP or HUD to DA.

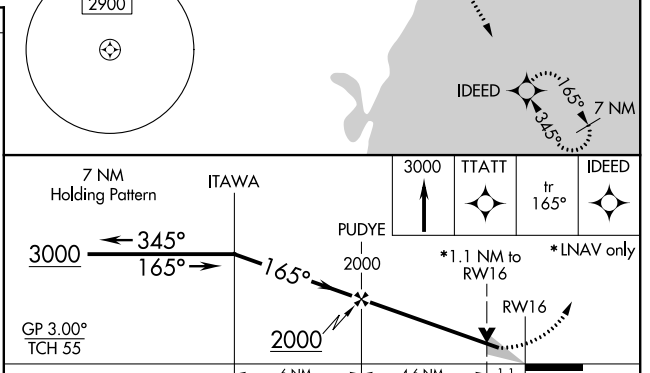
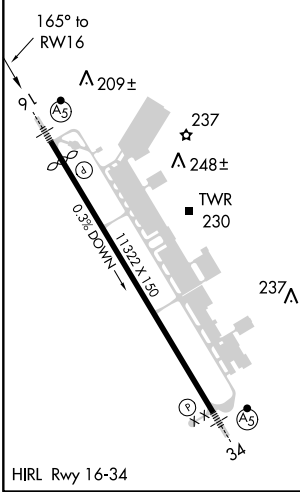
MALSR 

MISSED APPROACH: Climb to 3000 direct TTATT and on track 165° to IDEED and hold.

ATIS 132.05 273.5	BOSTON APP CON 125.05 269.4	PORTSMOUTH TOWER 128.4 269.0	GND CON 120.95 275.8	CLNC DEL 335.8	UNICOM 122.95
-----------------------------	---------------------------------------	--	--------------------------------	--------------------------	-------------------------



ELEV 100	D	TDZE 100
----------	----------	----------



CATEGORY	A	B	C	D	E
LPV DA **	300/24 200 (200-½)				
LNAV/VNAV DA	452/40 352 (400-¾)				
LNAV MDA	500/24 400 (400-½)		500/50 400 (400-1)		
CIRCLING	500-1	560-1	560-1½	680-2	800-2½
	400 (400-1)	460 (500-1)	460 (500-1½)	580 (600-2)	700 (800-2½)

NE-1, 08 OCT 2020 to 05 NOV 2020

NE-1, 08 OCT 2020 to 05 NOV 2020