

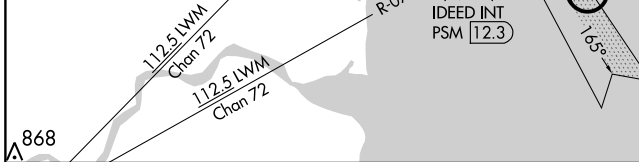
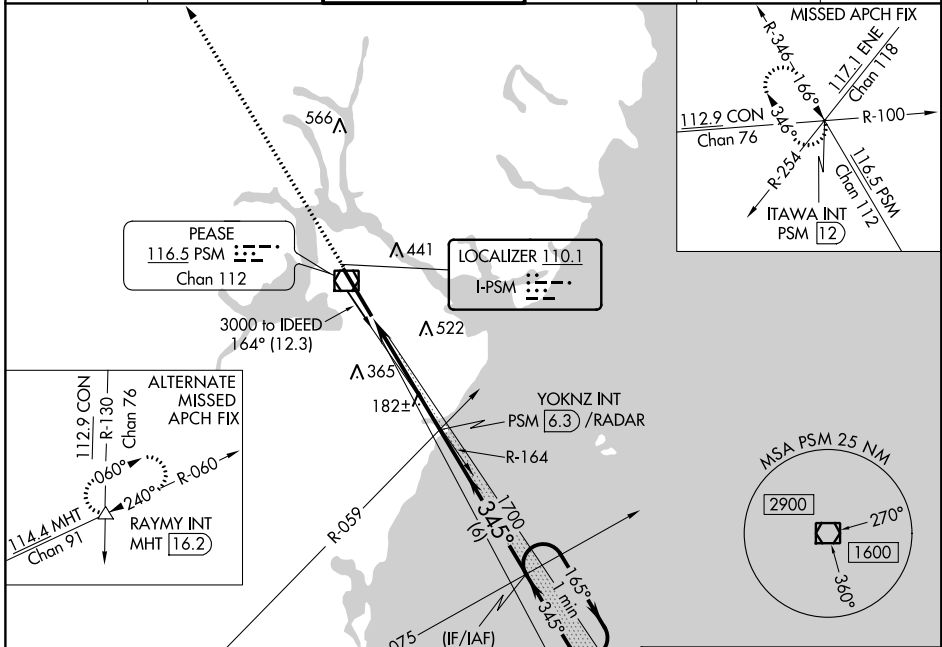
LOC I-PSM 110.1	APP CRS 345°	Rwy Idg TDZE Apt Elev	11321 84 100
---------------------------	------------------------	-----------------------------	---

ILS or LOC RWY 34

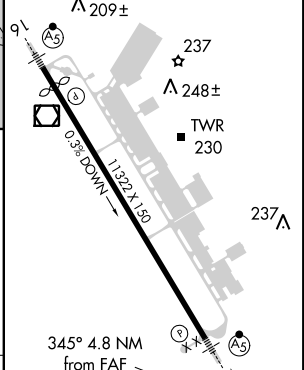
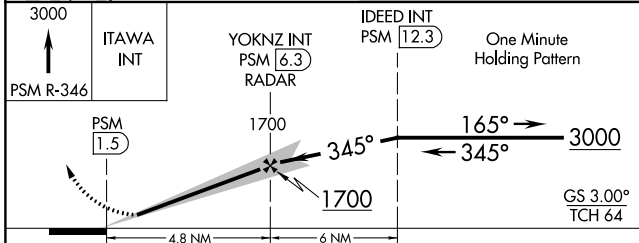
PORTSMOUTH INTL AT PEASE (PSM)

 Circling NA East of Rwy 16-34. For inoperative MALSR, increase S-ILS 34 Cat E visibility to RVR 4000 and S-LOC 34 Cat E visibility to RVR 6000.	 MALSRR	MISSED APPROACH: Climb to 3000 via PSM VOR/DME R-346 to ITAWA INT/PSM VOR/DME 12 DME and hold.
	 ASR	

ATIS 132.05 273.5	BOSTON APP CON 125.05 269.4	PORTSMOUTH TOWER 128.4 269.0	GND CON 120.95 275.8	CLNC DEL 335.8	UNICOM 122.95
-----------------------------	---------------------------------------	--	--------------------------------	--------------------------	-------------------------



ELEV 100		TDZE 84
----------	--	---------



CATEGORY	A	B	C	D	E	HIRL Rwy 16-34 FAF to MAP 4.8 NM
S-ILS 34	284/24 200 (200-½)					
S-LOC 34	440/24 356 (400-½)					440/40 356 (400-¾)
CIRCLING	480-1 380 (400-1)	560-1 460 (500-1)	560-1½ 460 (500-1½)	680-2 580 (600-2)	800-2½ 700 (800-2½)	Knots: 60 90 120 150 180 Min:Sec: 4:48 3:12 2:24 1:55 1:36

NE-1, 08 OCT 2020 to 05 NOV 2020

NE-1, 08 OCT 2020 to 05 NOV 2020