


VOR/DME MCW <b>114.9</b> Chan <b>96</b>	APP CRS <b>356°</b>	Rwy Idg <b>6401</b> TDZE <b>1193</b> Apt Elev <b>1213</b>
---	------------------------	---

# VOR RWY 36

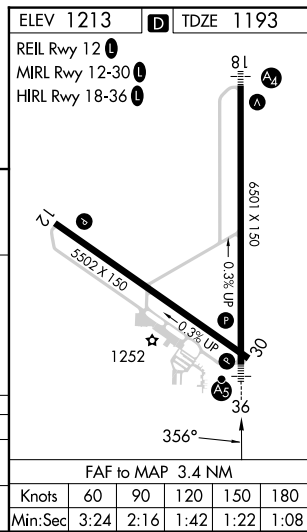
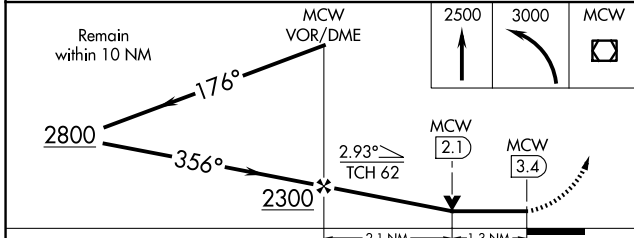
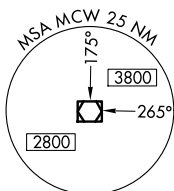
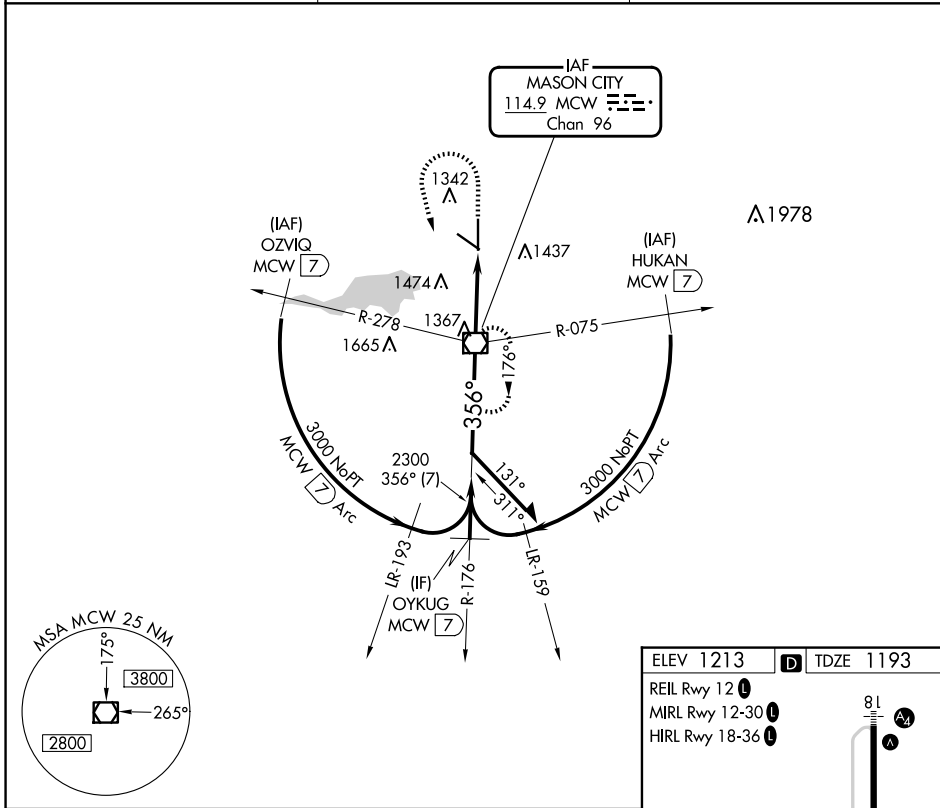
MASON CITY MUNI (MCW)

**V** VDP NA when using Charles City altimeter setting. When local altimeter setting not received, use Charles City altimeter setting and increase all MDA 100 feet and increase S-36 Cat C/D and Circling Cat C visibility ¼ mile.

**MALS** 

**MISSED APPROACH:** Climb to 2500 then climbing left turn to 3000 direct MCW VOR/DME and hold.

ASOS <b>120.3</b>	MINNEAPOLIS CENTER <b>127.3 257.675</b>	UNICOM <b>123.0 (CTAF)</b>
----------------------	--	-------------------------------



CATEGORY	A	B	C	D
S-36	1640- <sup>3</sup> / <sub>4</sub>	447 (500- <sup>3</sup> / <sub>4</sub> )	1640- <sup>7</sup> / <sub>8</sub>	447 (500- <sup>7</sup> / <sub>8</sub> )
CIRCLING	1680-1 467 (500-1)	1760-1 547 (600-1)	1780-1 <sup>1</sup> / <sub>2</sub> 567 (600-1 <sup>1</sup> / <sub>2</sub> )	1780-2 567 (600-2)

FAF to MAP 3.4 NM					
Knots	60	90	120	150	180
Min:Sec	3:24	2:16	1:42	1:22	1:08

NC-3, 17 APR 2025 to 15 MAY 2025

NC-3, 17 APR 2025 to 15 MAY 2025