

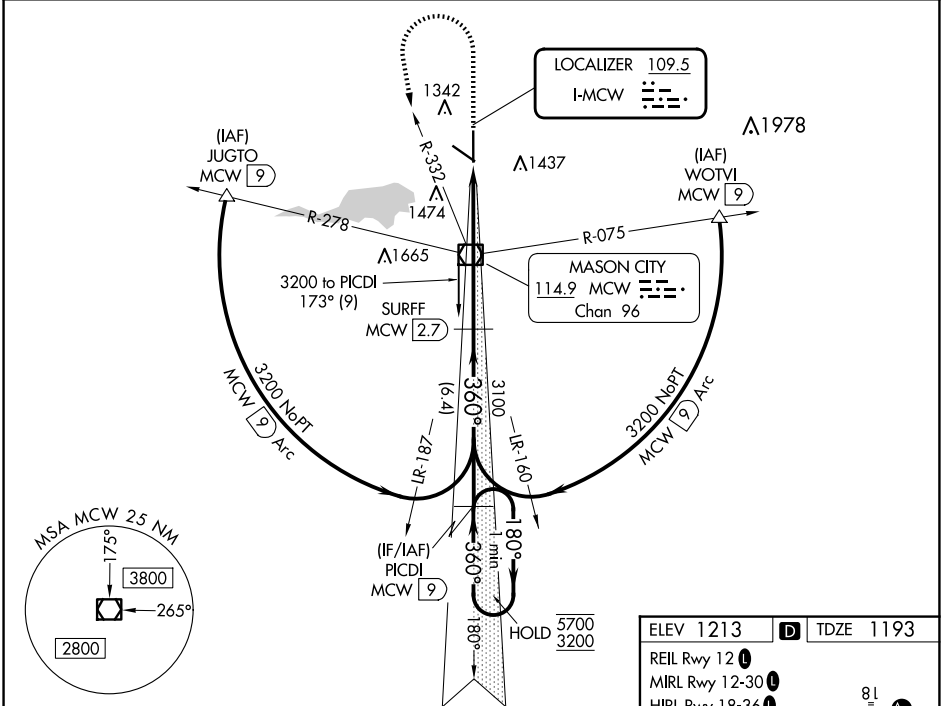
LOC I-MCW 109.5	APP CRS 360°	Rwy ldg 6401
		TDZE 1193
		Apt Elev 1213

ILS or LOC RWY 36

MASON CITY MUNI (MCW)

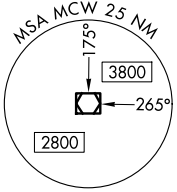
DME required.	MALSR	MISSED APPROACH: Climb to 2900 then climbing left turn to 3200 on heading 170° and MCW R-332 to MCW VOR/DME and on MCW R-173 to PICDI/MCW VOR/DME 9 DME and hold.
<p>▼ For inoperative ALS, increase S-LOC 36 Cats C and D visibility to 1¾ SM. DME from MCW VOR/DME. DME use requires simultaneous reception of I-MCW and MCW DME.</p> <p>▲</p>		

ASOS 120.3	MINNEAPOLIS CENTER 127.3 257.675	UNICOM 123.0 (CTAF) 0
----------------------	--------------------------------------------	---------------------------------

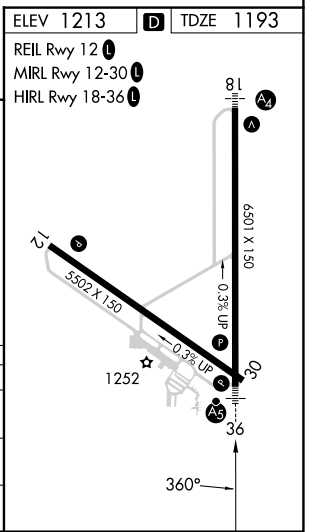
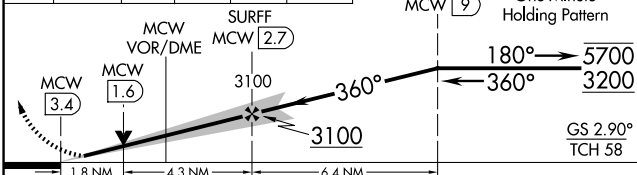


NC-3, 17 APR 2025 to 15 MAY 2025

NC-3, 17 APR 2025 to 15 MAY 2025



2900	3200	MCW R-332	MCW R-173	PICDI MCW 9	VGSI and ILS glidepath not coincident (VGSI Angle 2.90/TCH 62).
↑	hdg 170°				



CATEGORY	A	B	C	D
S-ILS 36	1393-½		200 (200-½)	
S-LOC 36	1800-½ 607 (600-½)		1800-1¾ 607 (600-1¾)	
CIRCLING	1800-1 587 (600-1)		1800-2 587 (600-2)	